

Agenda
Parks and Recreation Commission
City Of Edina, Minnesota
City Hall, Council Chambers

Tuesday, September 12, 2017
7:00 PM

- I. Call To Order
- II. Roll Call
- III. Approval Of Meeting Agenda
- IV. Approval Of Meeting Minutes
 - A. Minutes: Parks & Recreation Commission Aug. 8, 2017
- V. Special Recognitions And Presentations
 - A. Grandview Green Presentation
 - B. Tupa Park Renaming Proposal
- VI. Community Comment

During "Community Comment," the Board/Commission will invite residents to share relevant issues or concerns. Individuals must limit their comments to three minutes. The Chair may limit the number of speakers on the same issue in the interest of time and topic. Generally speaking, items that are elsewhere on tonight's agenda may not be addressed during Community Comment. Individuals should not expect the Chair or Board/Commission Members to respond to their comments tonight. Instead, the Board/Commission might refer the matter to staff for consideration at a future meeting.
- VII. Reports/Recommendations
 - A. Braemar Park Master Plan Update
 - B. Comprehensive Plan Committee
 - C. 2018 PARC Work Plan
- VIII. Correspondence And Petitions
 - A. City Council Updates Aug. 15 and Sept. 6, 2017
 - B. Correspondence Received through Sept. 6, 2017
- IX. Chair And Member Comments
- X. Staff Comments

XI. Adjournment

The City of Edina wants all residents to be comfortable being part of the public process. If you need assistance in the way of hearing amplification, an interpreter, large-print documents or something else, please call 952-927-8861 72 hours in advance of the meeting.



CITY OF EDINA

4801 West 50th Street

Edina, MN 55424

www.edinamn.gov

Date: September 12, 2017

Agenda Item #: IV.A.

To: Parks and Recreation Commission

Item Type:

Minutes

From: Ann Kattreh, Parks & Recreation Director

Item Activity:

Action

Subject: Minutes: Parks & Recreation Commission Aug. 8, 2017

ACTION REQUESTED:

INTRODUCTION:

ATTACHMENTS:

Minutes: Parks & Recreation Commission, Aug. 8, 2017



Minutes
City Of Edina, Minnesota
Parks & Recreation Commission
Edina City Hall, Council Chambers
Aug. 8, 2017

I. Call To Order

Chair McCormick called the meeting to order at 7:02 p.m.

II. Roll Call

Answering roll call were Commissioners McCormick, Gieseke, Burke, Willett, McAwley, McCormick, Good, Miller, Strother and Student Commissioners Gustafson and Hulbert.

Absent were: Commissioners Dahlien and Nelson

Staff present: Assistant Parks & Recreation Director Susan Faus and Administrative Coordinator Janet Canton

III. Approval Of Meeting Agenda

Motion made by Strother to approve the meeting agenda. Motion seconded by Good.

Motion carried.

IV. Approval Of Meeting Minutes

Motion made by Miller to approve the July 11, 2017 minutes. Motion seconded by Good.

Motion carried.

V. Community Comment

None

VI. Special Recognitions

Chair McCormick recognized and thanked Student Members Gustafson and Hulbert for their service this past year on the Parks & Recreation Commission.

VII. Reports/Recommendations

A. 2018 Parks & Recreation Commission Work Plan

The Parks & Recreation Commission discussed how they are going to move forward to finalize their Work Plan items for at the September meeting. The items were narrowed down to the following:

- Funding Options (project plan)
- Marketing and Communications
- Field Capacity and Utilization
- Environmental Stewardship will be put in the parking lot

It was decided the following commissioners will work with the following items:

- Commissioners Miller and Gieseke – Funding Options
- Commissioners Strother plus two others – Marketing and Communications
- Commissioners Good and McAwley – Field Capacity and Utilization
- Unassigned at this time – Environmental Stewardship

B. Adopt-A-Park Thank You Letter

Chair McCormick asked the Commission to read through the edited letter to the Adopt-a-Park participants. Commissioner Good made one minor change; the Edina To Go App should all be in capital letters.

Chair McCormick indicated Parks & Recreation Assistant Director Faus will make sure they have all of the right facts for the Edina Quality of Life Survey now that it has come in. At the September meeting the letters will be signed by the Commissioner(s) who is helping with each of the individual parks.

Commissioner McAwley asked for a list of parks that have not yet been adopted.

VIII. City Council Updates July 18 and Aug. 2, 2017

A. Chair McCormick acknowledged the receipt of the City Council updates

IX. Chair And Commissioner Comments

- Commissioner Strother indicated that she has seen folks playing cricket on a baseball/softball field. She thinks it's something they should keep their eye on because in the past they have talked about different ways different types of fields could be utilized. Commissioner Miller added every Friday night there is also a group playing cricket within the hockey boards at Cornelia School Park.
- Commissioner Good indicated he participated in the first walk through of the new Braemar Golf Course; there will be two more taking place one in September and one in October. He noted it was fun to see the course starting to take shape as well as it was somewhat surprising to see how much progress has been made.
- After reading in the City Council updates regarding the approval of work being done on a number of tennis courts Commissioner Good suggested information such as this should be communicated to the Adopt-a-Park contacts. He thinks the residents would appreciate knowing it has been approved and can look forward to it happening. Assistant Parks & Recreation Director Faus stated Staff Liaison Kattreh and herself have recently discussed they need to be communicating well in advance that these projects are happening. Commissioner Miller suggested with the marketing/communication initiative with the Work Plan maybe they can put a better plan in place.

- Commissioner Gieseke asked Assistant Parks & Recreation Director Faus if she had any background on where the City Council is at with regards to the Arden Park project. Assistant Parks & Recreation Director Faus replied the City Council has decided they want to add another public hearing to get a little more feedback from the residents. The public hearing will take place at the Sept. 6 City Council meeting and a decision will take place at the Sept. 19 City Council meeting.

X. Staff Comments

Assistant Parks & Direction Faus gave the following updates:

- The Aquatic Center will close for the season on Aug. 20.
- The Braemar Golf Course walking tour dates are Sept. 9 and Oct 7.
- The new website was launched on Aug. 3; they have received a lot of comments and positive feedback.
- Staff is continuing working with Geograph Industries on the park entrance signage; there have been discussions using the leftover funds from the low bid for some additional wayfinding signage.

XI. Adjournment

Motion made by Gieseke to adjourn the Aug. 8, 2017 meeting at 7:26 p.m. Motion seconded by Miller. Motion carried.



CITY OF EDINA

4801 West 50th Street

Edina, MN 55424

www.edinamn.gov

Date: September 12, 2017

Agenda Item #: V.A.

To: Parks and Recreation Commission

Item Type:

Other

From: Katie Clark Sieben, Economic Development Project
Consultant

Item Activity:

Subject: Grandview Green Presentation

Information

ACTION REQUESTED:

None. Presentation and information only.

INTRODUCTION:

Katie is the economic development project consultant working with Bill Neuendorf at the City of Edina. She will briefly present the Grandview Green project which aims to develop a green lid (2-3 acre park) over Highway 100 near the Vernon and Eden bridges. She'd like to present the project concept to receive feedback from commission members at this early stage in the project. Presentation is attached.

ATTACHMENTS:

Grandview Green Presentation



The CITY of
EDINA

Grandview Green:

A Case Study for Lid Development in MN

September 2017

Katie Clark Sieben, Project Consultant

*DRAFT for Preliminary Discussion Purposes



The CITY of
EDINA

Today's Agenda

- Edina's Grandview District
- The Grandview Green Project:
 - Concept
 - Feasibility Study Findings
 - Five Year Vision
 - The Partnership
- Next Steps



The CITY of
EDINA

Why Grandview Green?

- ▶ Reconnect neighborhoods and communities divided by Highway 100
 - Reestablishes street grids, safe pedestrian walkways and bicycle paths
 - Provides new green space for community programming and social events
 - ▶ Increases economic productivity:
 - Of airspace above Highway 100
 - Of land adjacent to Highway 100
 - ▶ Enhances sustainability practices through increased storm water collection, potential solar installations, etc.
 - ▶ Serves as a case study for lid development in Minnesota
-

MN Green Lid Outcomes



The CITY of
EDINA

	Neighborhood Connectivity	Economic Development	Green Space	Transportation / Parking
Longfellow Gardens, Minneapolis			X	
ABC Ramps, Minneapolis				X
Fort Snelling, Saint Paul			X	
JW Marriott at MOA, Bloomington		X		
Leif Erickson Park, Duluth	X		X	
Grandview Green, Edina	X	X	X	X

...also serves as a case study to uncover how we leverage unused public land to spur private development!



2012 Grandview District Development Framework



The CITY of
EDINA

- ▶ Create a place with a unique identity announced by signature elements like: an iconic ‘gateway’, a central commons, serves the neighborhood’s needs, innovative 21st century sustainability approach
- ▶ Completely rethink and reorganize the District’s transportation infrastructure to: make the district accessible to pedestrians and cyclists, provide automobile friendly access to convenience retail and preserve future transit opportunities consistent with the district’s envisioned character
- ▶ Leverage public resources to make incremental value-creating changes that enhance the public realm and encourage voluntary private redevelopment consistent with the vision that improves the quality of the neighborhood for residents, businesses, and property owners



2016 Grandview District Transportation Study



The CITY of
EDINA

► Short Term Changes (0–5 Years)

- **Pedestrian crossing** and intersection improvements for Vernon and Eden Avenues
- Conversion of two **off-ramps from Highway 100**
- Reconfiguration of Arcadia Avenue along former Public Works site to **accommodate pedestrians and bikers**

► Mid Term Changes (5–15 Years)

- Vernon and Eden Avenues converted to **support bikes, pedestrians, greenspace and traffic management**
- Added infrastructure **to support bicycling** on Eden Avenue over Highway 100
- **Enhanced bus stops**
- New frontage road **providing southbound access to Highway 100 and development parcels** on west side of Highway 100
- **Improved parking**

► Long Term Changes (15–30 Years)

- **New pedestrian and cyclist connection** over Highway 100 to City Hall
 - New frontage road providing **northbound access to Highway 100 and development parcels** on east side of Highway 100
 - Direct connection for **high capacity transit line** and **new district parking** on the former public works site
-

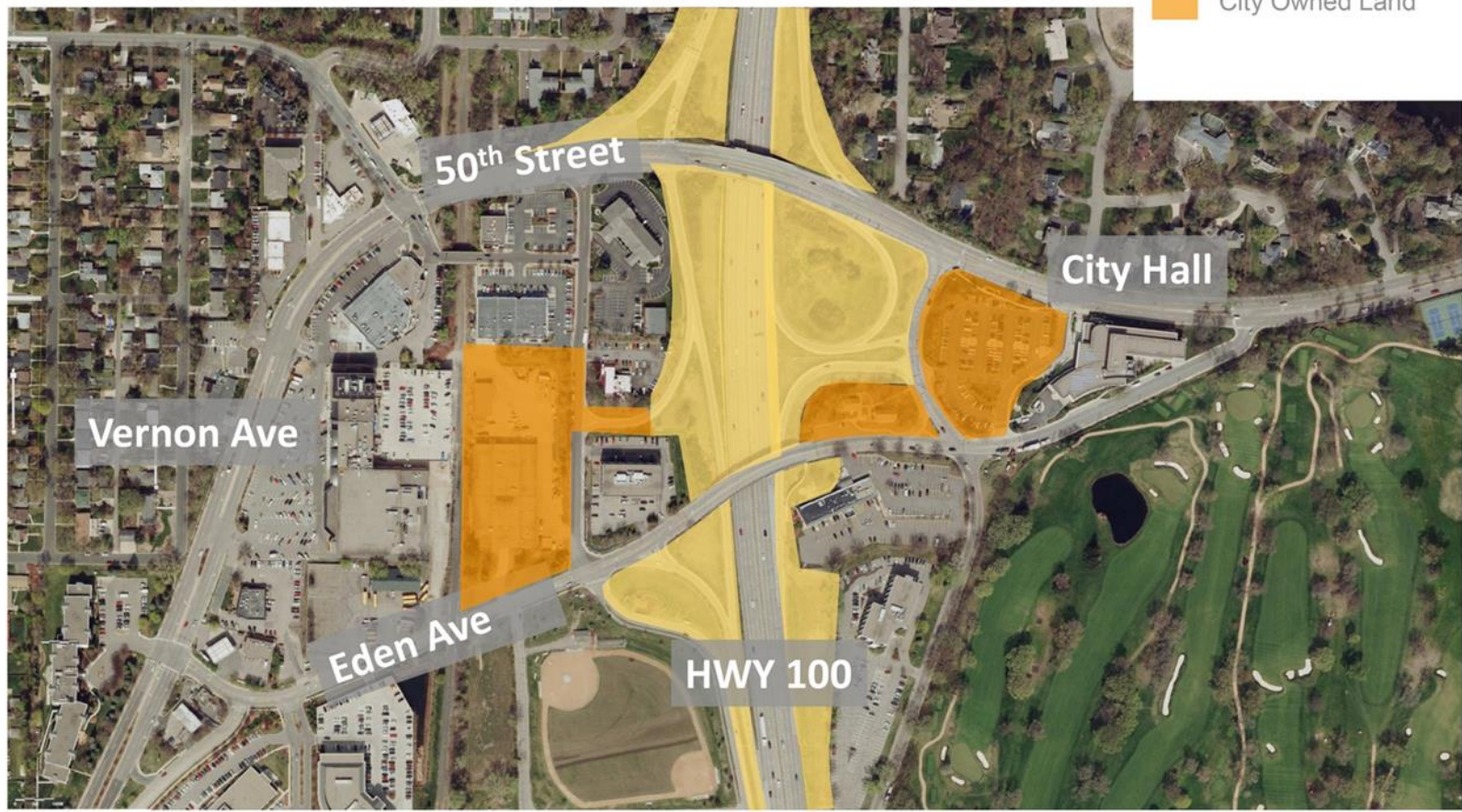
Grandview Green Feasibility Study



The CITY of
EDINA

- ▶ In summary, the May 2017 feasibility study found:
 - **No major fatal flaws** in the development of a green lid over limited portions of Highway 100.
 - This concept has the potential to create approximately **13 acres of new buildable land** on 16 parcels.
 - The area has the potential to support **2,525 new parking spaces** and an additional **2.4 million square feet in private development**.
 - After completion, property tax revenue is projected to increase from approx. **\$2 million to \$100 million**.
 - There is a dramatic range in the level of public investment that could be needed for this project:
 - **\$6.7 million** for the construction of one lid segment (another est. \$2.3 million for design, landscaping, etc.)
 - **\$70–90 million** if both lid segments, new roads and off-ramps and public parking ramps are constructed
 - Several public entities could potentially be involved in this project – MnDOT, the Metropolitan Council, Hennepin County, the City of Edina and possibly others.
 - The initial economic analysis predicts the public investment will realize a **348% return on investment** over a fifteen year period (assumes a public investment of \$37 million).
-

Grandview Green Land Ownership

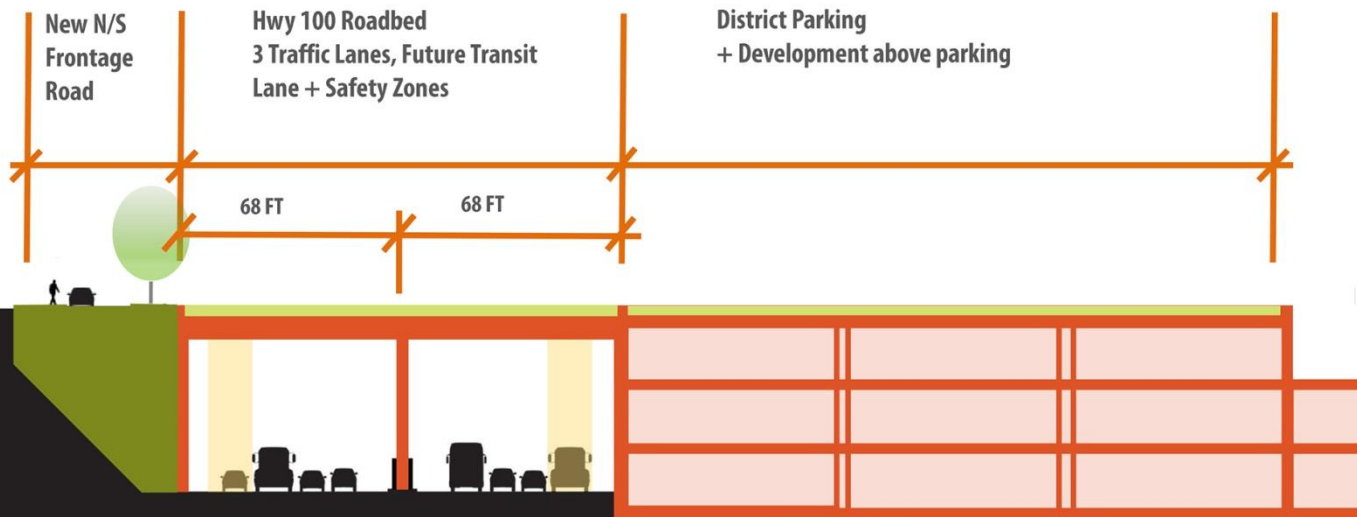


Grandview Green

Proposed Highway 100 Lid Section

East West Site Section

Redevelopment Zone



Grandview Green Concept Parcels

Parcel 1	Approx. 27,000 SF
Parcel 2	Approx. 27,000 SF
Parcel 3	Approx. 46,000 SF
Parcel 4	Approx. 57,000 SF
Pavilion 5a	Approx. 2,000 SF
Parcel 5b	Approx. 11,000 SF
Parcel 6	Approx. 21,000 SF
Parcel 7a	Approx. 26,000 SF
Parcel 7b	Approx. 20,000 SF
Parcel 8	Approx. 17,000 SF
Parcel 9	Approx. 31,000 SF
Parcel 10	Approx. 85,000 SF
Parcel 11	Approx. 50,000 SF
Parcel 12	Approx. 86,000 SF
Parcel 13	Approx. 150,000 SF
Parcel 14	Approx. 34,000 SF Redevelopment site with Parcel 7b
Parcel 15	Redevelopment
Parcel 16	Redevelopment

Total Parcels 13 Acres



Grandview Green Public Infrastructure

New Roads

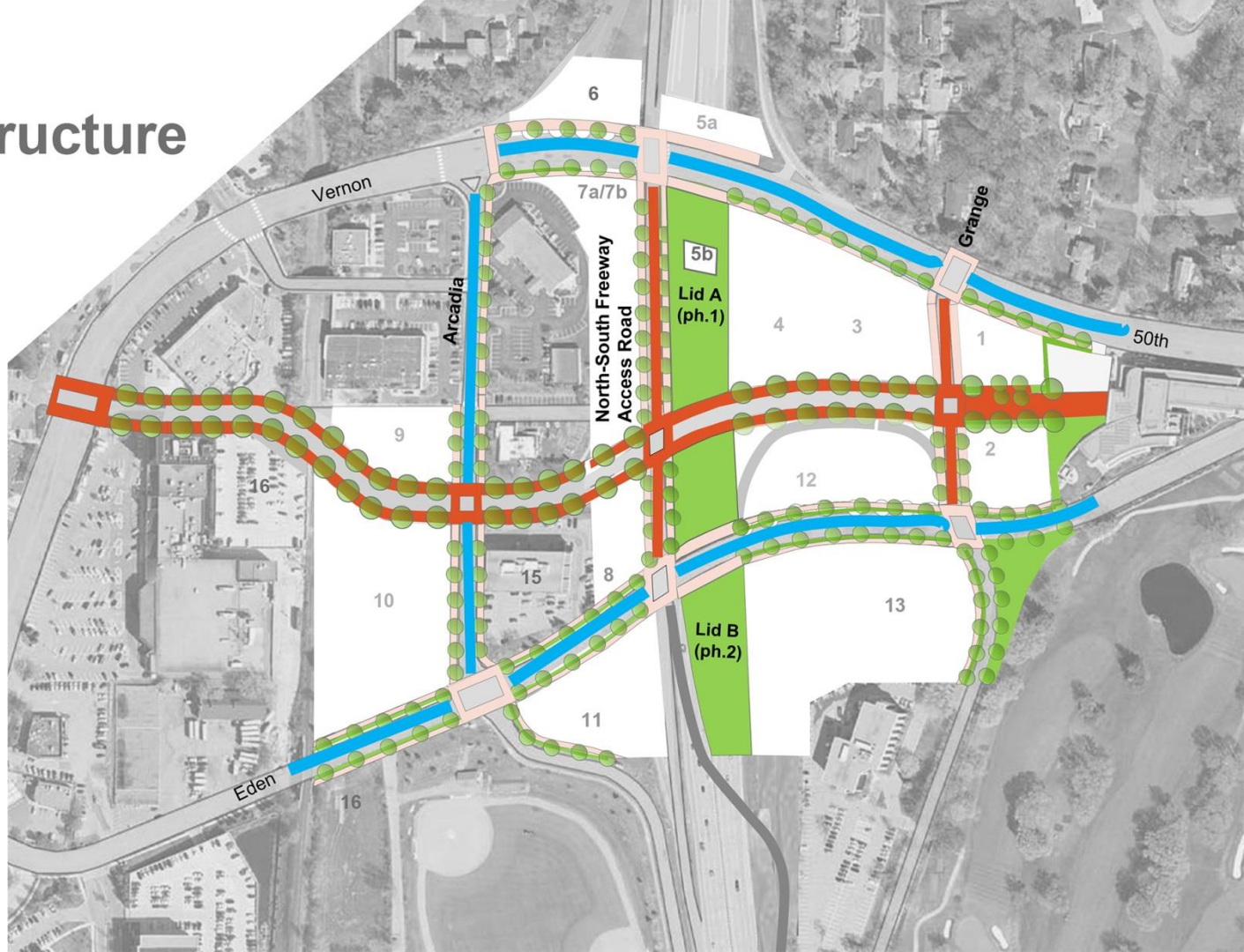
- Central Main Street (New)
- North South Freeway Access (New)
- Grange (New alignment)

Public Realm Improvements

- Arcadia
- Eden
- 50th

Lids + Green

- Lid A 42,000SF
- Lid B 36,000SF



Grandview Green Road Alignments



New Intersections



Intersections Removed



Impact on Existing Properties

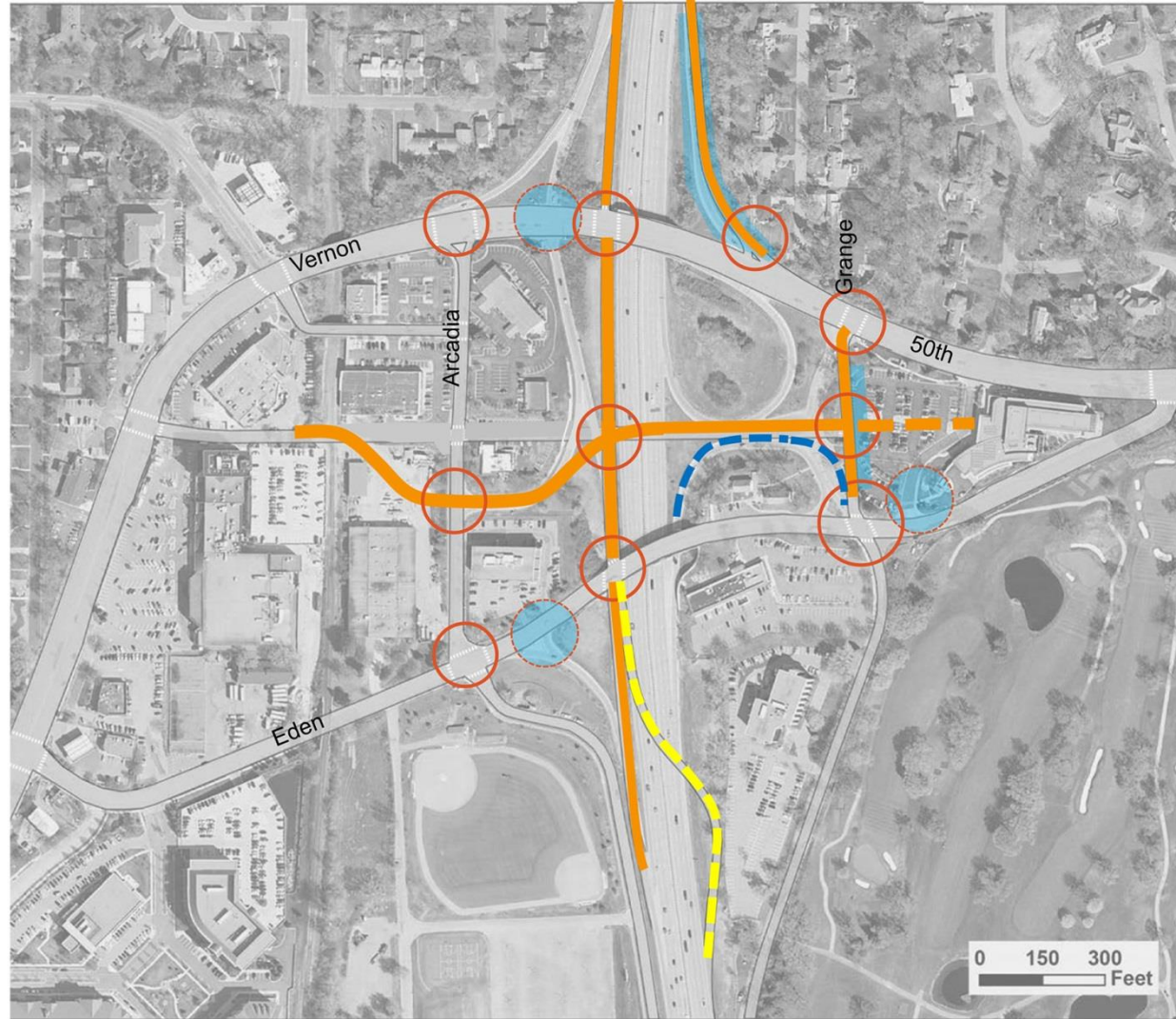


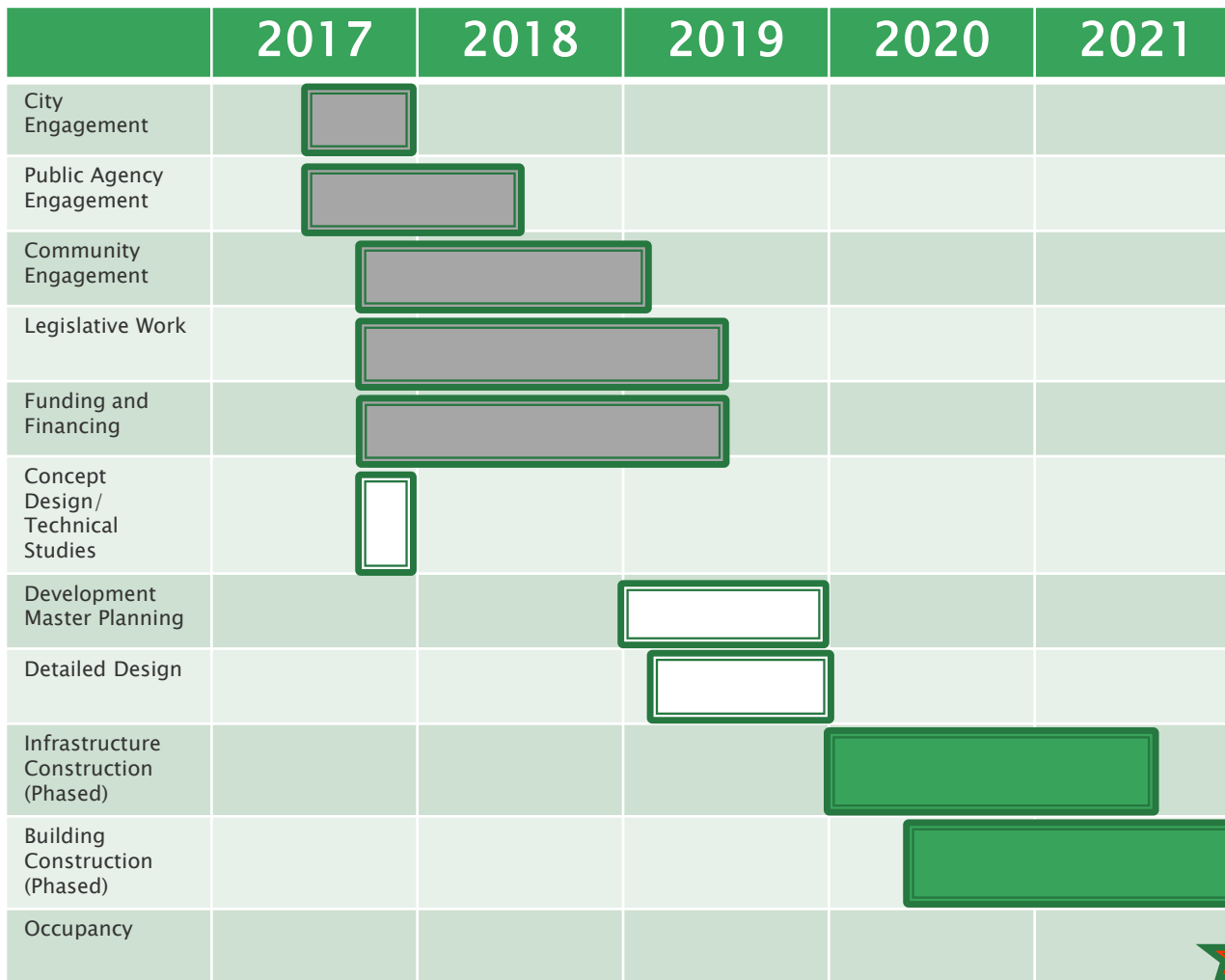
Phase 1 Access from
Northbound Hwy 100



Phase 2 Access from
Northbound Hwy 100

Architecture Field Office

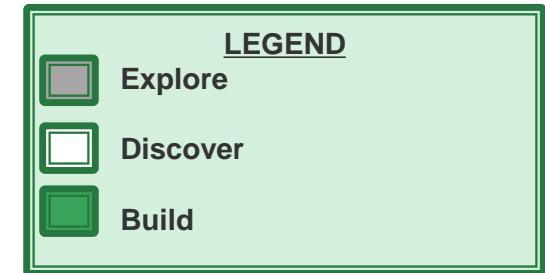




The CITY of
EDINA

Grandview Green 5 Year Vision

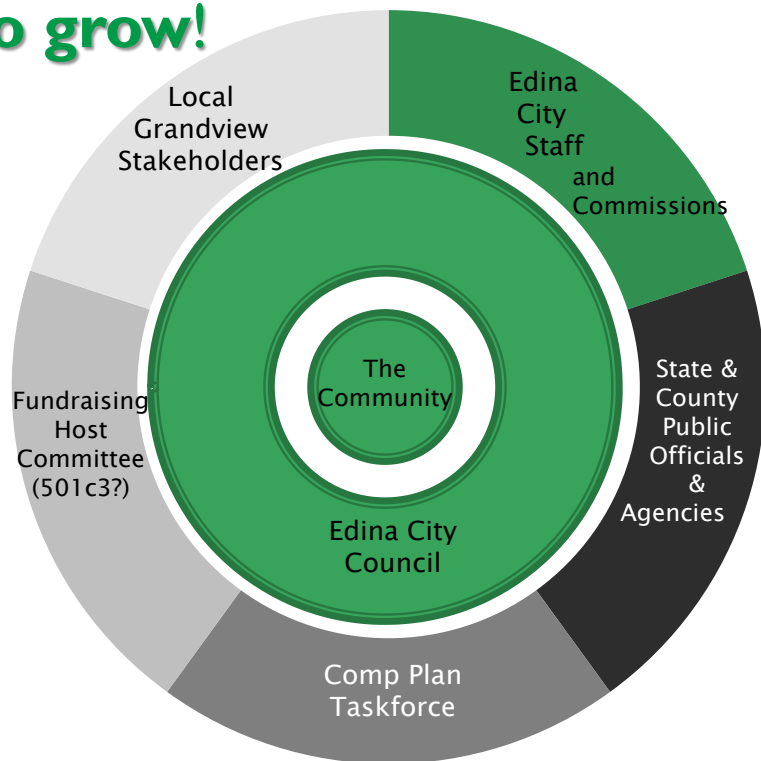
- Infrastructure Construction Begins: 2020
- Building Construction Begins: Mid 2020
- Occupancy Begins: 2022



The Grandview Green Partnership... will continue to grow!



The CITY of
EDINA





The CITY of
EDINA

Next Steps:

► Fall 2017:

- Roadshow Presentations for City Commissions
- Urban Land Institute Technical Assistance Panel
- Launch Four Exploratory Technical Studies:
 - Transportation
 - Utilities
 - Sustainability
 - Market Research
- Community Visioning Sessions with Businesses, Neighborhoods, Schools and Churches

► January 2018:

- Grandview Green Update to Edina HRA
-



DRAFT

September 2017



DRAFT
September 2017

Contact Information



The CITY of
EDINA

Katie Clark Sieben

Economic Development Project
Consultant

Ksieben@edinamn.gov

612-655-5199

Bill Neuendorf

Economic Development Manager

Bneuendorf@edinamn.gov

952-491-1143



CITY OF EDINA

4801 West 50th Street

Edina, MN 55424

www.edinamn.gov

Date: September 12, 2017

Agenda Item #: V.B.

To: Parks and Recreation Commission

Item Type:

Other

From: TJ Malaskee, Edina Historical Society

Item Activity:

Subject: Tupa Park Renaming Proposal

Discussion, Information

ACTION REQUESTED:

None. Information only.

INTRODUCTION:

TJ Malaskee and Bob Moore from the Edina Historical Society would like the Parks & Recreation Commission and City Council to consider changing the name of Tupa Park to Yancey Park. They will present details in a PowerPoint presentation.



CITY OF EDINA

4801 West 50th Street

Edina, MN 55424

www.edinamn.gov

Date: September 12, 2017

Agenda Item #: VII.A.

To: Parks and Recreation Commission

Item Type:
Report and Recommendation

From: Ann Kattreh, Parks & Recreation Director

Subject: Braemar Park Master Plan Update

Item Activity:
Discussion, Information

ACTION REQUESTED:

None. Information only.

INTRODUCTION:

Ken Grieshaber from SRF will present some preliminary findings and concepts. We will be asking the Commission for feedback on the concepts presented. Next steps will be a second open house on Monday, September 18 and feedback from the City Council at a work session on Tuesday, September 19.

ATTACHMENTS:

Project Schedule

Community Meeting #1 Feedback

Stakeholder Meeting Comments

Online Survey Question 1

Online Survey Question 2

Online Survey Question 3

Preliminary Issues & Opportunities Handout

Braemar Park Master Plan Project Schedule

Project Task	Meetings	Date
1. Project Start Up	City Staff Kick Off Meeting	June 14
	Richard Mandell – Golf Course Update	June 21
2. Inventory and Analysis	Stakeholder Interviews: • Recreation • Environmental • Trail Users • City Staff	June 28 June 28 June 29 June 29
	City Staff Check In / Review	July 6
3. Park Programming/Amenities Idea Solicitation	Park & Rec Commission Feedback	July 11
	City Council Feedback	July 18
	City Staff Check In / Review	July 21
	Community Meeting #1	July 26
	On Line Community Input	Post by July 27
4. Concept Alternatives	City Staff Check In / Review	Sept 5
	Park & Rec Commission Feedback	Sept 12
	Community Meeting #2	Sept 18
	City Council Feedback	Sept 19
	On Line Community Input	Post by Sept 19
5. Draft Master Plan Recommendations	City Staff Check In / Review	Oct 18
	Community Meeting #3	Oct 23
	On Line Community Input	Post by Oct 24
6. Final Master Plan Recommendations	Park & Rec Commission Approval	Nov 14
	City Council Approval	Nov 21 or Dec 5

MEETINGS: ■ City Staff ■ City Council ■ Park & Rec ■ Stakeholder ■ Community On-line public comment

Summary of Community Meeting #1 Display Board Comments – July 26, 2017

What types of new amenities or improvements would you like to see at Braemar Park?

Playground Facility – Limited playgrounds in surrounding neighborhood. Playground was removed when Braemar Field was developed and a new one should be provided somewhere in park

Picnic Tables/Shelters – Family area for picnics and shade accommodations

Improved Signage and Wayfinding – Very important need throughout park

Lighting and Sideline Fencing on Premier Field – benchmark field needed for “home” field

Improved Accessibility – Extend sidewalk along Braemar Boulevard to connect to golf course and other park amenities

Improved Bike and Pedestrian Trail Circulation - Create a 3 mile walking/running path through woods, connect walking path on east hill to 78th Street and to rest of park. Keep ability for hiking/running and mountain bike trails to co-exist

Other - Cross Country Ski Trails – huge demand for additional ski trails, on golf course only

Nature Activities – nature focused trail separate from mountain biking

Soccer/Lacrosse Field Near Gleason

What other types of uses would you like to see at Braemar Golf Course?

Slidding Hill - Slidding hill already present on Golf Course, new hill not needed

Platform Tennis – good winter sport option for golf course area, also consider lawn games

XC Ski Trails – Use edges of golf course for trails, no snow making, large demand for ski trails

Other – Whatever is implemented should be respectful to residents (lighting, sound, etc.)

Goal shouldn't be to have a revenue generating enterprise other than what already exists

What types of trail uses would you like to see accommodated or expanded at Braemar Park?

Mountain Biking – 19 yes, 1 no – MB riding is a great family activity, best use for trail type because of terrain, should limit impact on natural resources, growing sport, good activity for teenage youth, volunteers can maintain trail, silent sport, no lighting needed, do not have to worry about conflicts with cars

Walking/Hiking/Running – 17 yes, 1 no – trail access needed to neighborhood, connect east and west side trails, keep separate from mountain bike trails, Braemar Boulevard needs a completed sidewalk system on south side of street

Fat Tire Biking (Winter) – 16 yes, 2 no – provides more year-round activity in park, same summer mb trails can be used, low impact on natural resources

Cross Country Skiing – 5 yes, 4 no – currently there are limited areas to ski in City, would be nice to have it consistently groomed, skiers will come to use golf course even if it is not groomed

Snowshoeing – 10 yes, 3 no – people use trails now to snow shoe, trails should be marked better to improve wayfinding, snow shoe users can also use fat tire mb trails

How and where should natural resource areas be enhanced as part of the Braemar Park experience?

Wetland/floodplain areas on the north and south sides of park - 2 yes

Woodland areas on the east and west sides of park - 5 yes – important areas to restore, keep east hill a natural area, maintain natural trails

Improved boardwalk/trail access to natural areas – 7 yes – maintain access to commercial buildings to south, create a loop system

Add overlooks and seating areas – 7 yes – add shade structures along trail

Remove and manage invasive plant material – 3 yes – 25 year effort has not completed very good results, focus on removals in oak woodland areas

Provide interpretation/educational signage elements – 3 yes – stormwater education, dry creek beds, infiltration areas, especially behind dome, Courtney parking lot

Other – School project to add beehives, wildflowers, etc.

What facilities do you currently use at Braemar Park?

Courtney Fields - 0

Braemar Field - 7

Braemar Arena - 7

Backyard rink - 4

Golf Dome - 4

Tin Fish - 21

Trail System- 71

Driving range - 12

Golf Course – 8

Academy 9 - 8

Other – Snoeshoe - 6

To: Ann Kattreh, Parks & Recreation Director
Client Organization

From: Ken J. Grieshaber, Principal

Date: July 5, 2017

Subject: Braemar Park Master Plan – Stakeholder Meeting Comments

The following summary of comments were made with recreation, environmental, trail user, and City Staff stakeholder groups held on June 28 and June 29 at the Braemar Golf Course Clubhouse.

Recreation Stakeholders – Meeting Attendees:

- ESC Tiffany Hoffman – Recreation Supervisor
- Jeff Northrup – Edina Soccer Club
- Greg Brown – Edina Baseball Association
- Brenda McCormick – Parks and Recreation Commission Chair
- Sheffield and Athena Priest – Tin Fish
 - Courtney Fields are heavily programmed from May 1 through July. There is some High School use of fields in April and May, and a fall baseball program in September with lower intensity field use. Fields are typically rested and not programmed in August.
 - Braemar Field is programmed about 20 percent of the time for baseball activities and 65 percent of the time for soccer activities from November 1 through April 30.
 - The Golf Dome is used for some recreational sports during the winter months.
 - Baseball outfields no longer used for soccer and football activities.
 - Field #1 needs updated athletic field lighting.
 - Have looked at adding grandstand seating area for Field #1 to expand seating capacity to 250-500 spectators.
 - Would like to add some higher side line fencing to keep foul balls from going on to other fields.
 - Providing more shade for spectators as part of grandstand has also been studied.
 - Some areas of fields having standing water after heavy rains.
 - Courtney Fields are hosting a Legion Tournament next summer.
 - There is limited open lawn space areas for player warm ups.
 - Accessibility walk access to fields is a challenge.

- Some consideration should be given to adding a new soccer field within the Braemar Golf Course between Zone 3 and Braemar Boulevard.
- Park entrance signage and wayfinding needs to be improved throughout the park.
- Adding a play area component to Zone 1 or Zone 3 would be a nice amenity to have in the park.
- Entrance/arrival experience to Braemar Arena needs to be improved.
- Tin Fish Owners would like to see opportunities explored for increasing visibility of the restaurant within the park and identify more public uses near golf course to attract more year-round customers.
- Installation of a fire sprinkler system on the outdoor rink would allow for larger crowds and programming events to be accommodated here.
- Would like to see side netting or rain shields installed on the sides of the rink

Environmental Stakeholders – Meeting Attendees

- Randy Anhorn – Nine Mile Creek Watershed District
- Karen Wold – Barr Engineering
- Doug Mensing – Applied Ecological Services
 - New Proposed boardwalks within floodplain would have to be installed 24 inches above the low floor ground elevation.
 - Wetland delineations have been completed for most areas of the park. Barr will provide mapping to SRF.
 - If helical post systems are used for boardwalks, impacts to wetlands would need to be accounted for all post locations.
 - Watershed District is interested in projects which promote the treatment and reuse of storm water in the park which could include developing irrigation systems for the golf course and athletic field areas. Agency may also have financial resources to contribute towards these types of projects which could be implemented in the park.
 - Wetland buffer requirements need to be met for installation of all new trail systems.
 - More follow up is needed with the ACOE to determine what restrictions may be in place for implementing park improvements within the two oak savanna restoration areas within Zone 1 and Zone 2 of the park.
 - Winter trail alignments through any wetland areas for fat tire mountain biking and/or xc skiing would have to be evaluated in more detail to determine if there were any adverse impacts to wetland areas for winter use.

Trail User Stakeholders – Meeting Attendees

- Andy Turnbull – Edina HS Nordic
- Tim Sudeith – Edina HS Mountain Biking

- Bill Bieganek – MORC
- Tom Swenson – Braemar Golf Superintendent
- Julie Strother – Parks and Recreation Commission
 - New mountain bike trails should include provisions for signage, bike wash stations, vehicle parking, bike parking, locker, and shower facilities if possible.
 - Trail connections to the park should also be made with surrounding City and Regional trail systems to promote safe and convenient access to the park.
 - Mountain bike user groups would support developing some shared use walking trail systems if needed in some areas of the park to establish new trail connections around the perimeter of the park.
 - Trail system should offer a varying range of difficulty and challenge for bike users and offer family friendly trails.
 - Lebanon Hills in Dakota County is a good example of a well-designed mountain bike trail system.
 - Having a trail system 3-5 miles long would be a targeted goal for the park.
 - Edina High School mountain bike team has interest in using park as training facility or possibly hosting a high school meet which could attract 500-700 riders. Parking accommodations would have to be planned to not impact golf course and other parking needs for the park.
 - High School currently has about 65 kids on mountain bike team.
 - Trail systems should be designed to have good flow with grade changes and smooth turning corners and constructed using sustainable trail design practices to minimize maintenance needs and avoid soil erosion.
 - One-way directional trails are preferred for mountain bike trails.
 - Would be nice to have a separate practice skills area as part of mountain bike trail riding area.
 - Maximum trail width should be five feet to allow for a rider passing lane.
 - A controlled access point should be established for the trail system so it can be closed when there are poor trail conditions.
 - MORC often uses volunteers to maintain trail systems through contracts established with land owner. Volunteer maintenance would include keeping the trail clear of vegetation and maintaining trail surfacing.
 - Installation costs for mountain bike trails are \$5-8 per lineal foot depending on the trail section type and gradient being constructed.
 - Fat tire biking on trails should also be accommodated during the winter months

- Edina High School has interest in using the park and golf course for xc skiing when snow conditions are good. Teams currently use Wirth Park because of more reliable trail conditions with snow making facilities.
- Soft surface trails in the park are also used for dry land xc ski training during the fall season.
- High School currently maintains about 5k of trails on school property and make some snow to provide more reliable ski trail conditions. New building expansion, athletic field improvements, and a new regional trail have all impacted the current trail system which will reduce the length and quality of trail.
- High School currently has 150-200 kids in xc ski program.

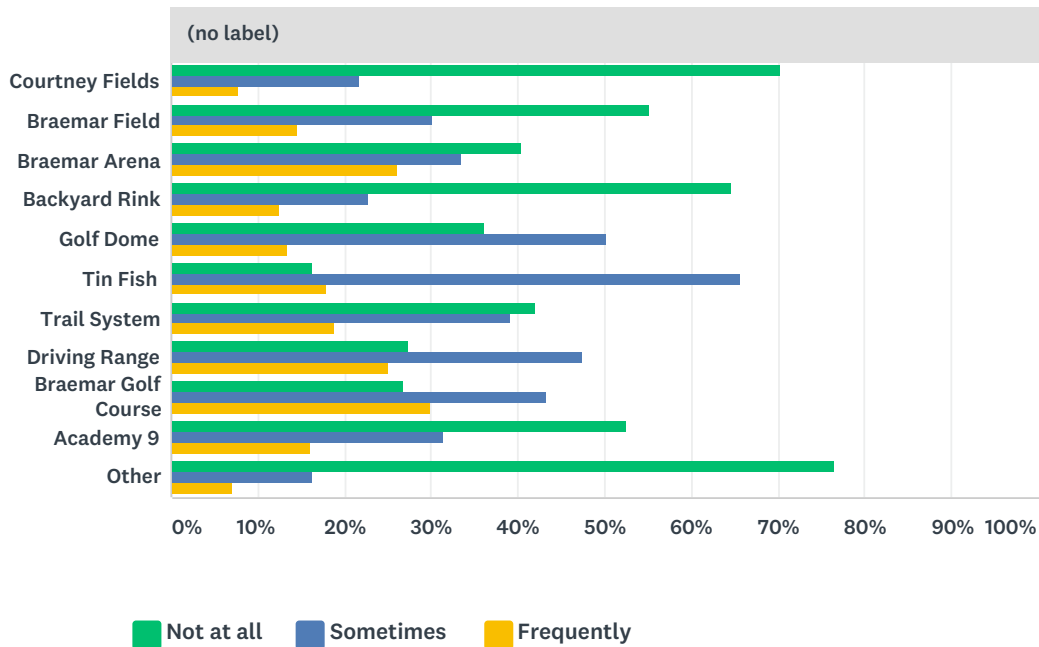
City Staff Stakeholders – Meeting Attendees

- Brian Olson – Public Works Director
- Tom Swenson – Braemar Golf Superintendent
- Mary Wooldridge – Braemar Golf Assistant GM
- Joe Abood – Braemar Golf GM
- Ross Bintner – Engineering Services Manager – Environmental Specialist
- Bob Prestrud – Park Maintenance Supervisor
- Dave Goergen – Public Works Coordinator
- Tara Brown – Sustainability Coordinator
- Susan Faus – Assistant Parks & Recreation Director
- Mark Nolen – Transportation Planner
- Chad Eischens – Braemar Arena GM
- Tiffany Hoffman – Recreation Supervisor – Athletics
- Julie Strother – Parks and Recreation Commission
 - New sideline fencing upgrades have been requested to control foul balls going on adjacent fields.
 - New LED field lighting is being studied to be installed on field #1.
 - Building improvements for storage and other uses are being requested for the second floor of the concession/restroom building.
 - Public Works will be repaving the east side segment of Braemar Boulevard later this year before the golf course opens in 2018.
 - Pedestrian and bike movement connections are challenging along Braemar Boulevard, especially near connection with US 169 Frontage Road and conflicts with maintenance facility driveways.
 - Wayfinding needs to be improved throughout the park.

- Master plan recommendations should consider City adopted climate change goals for the reduction of greenhouse gases, consideration of climate change impacts, and utilizing efficient energy systems within the park.
- Like the idea of incorporating a natural play area somewhere in park.
- City has received calls about wanting an archery range installed in the park.
- Neighborhood currently uses the Academy 9 area of the golf course for informal sledding.
- Spectators attending athletic events at the park are looking for things to do between games and providing more visibility and awareness of Tin Fish restaurant, surrounding trail systems, and a play area for kids would help provide more activities for these park user groups.
- There may be more opportunities to create additional trail systems in Zone 2 near the public works cold storage facility but there is concern for avoiding conflicts with large service vehicles coming and going from this area of the park.
- There are challenges with maintaining some of the lawn and planting areas between the frontage road and parking lots in Zone 1. Consideration for no-mow turf areas should be considered here.
- Pursuing new park improvements within the old gun range site on the southwest corner of park should be avoided because of potential soil contamination issues there.
- Master plan recommendations should also integrate new initiatives being considered as part of the new pedestrian/bike system plan being completed by the City.

Q1 What facilities do you currently use at Braemar Park?

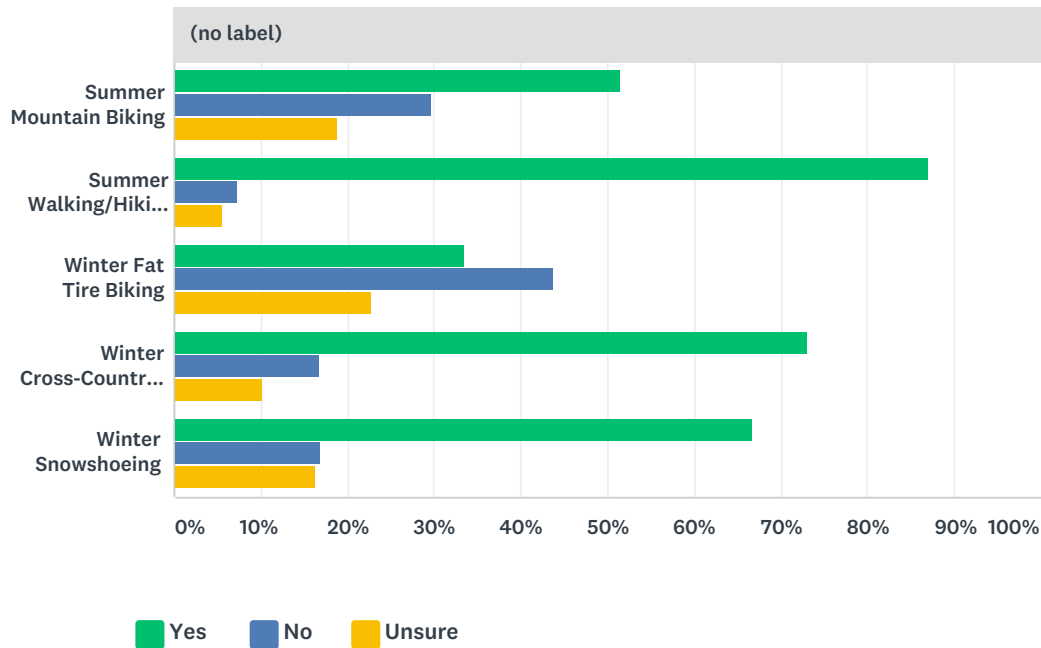
Answered: 668 Skipped: 0



(no label)				
	NOT AT ALL	SOMETIMES	FREQUENTLY	TOTAL
Courtney Fields	70.37% 342	21.81% 106	7.82% 38	486
Braemar Field	55.19% 287	30.19% 157	14.62% 76	520
Braemar Arena	40.33% 219	33.52% 182	26.15% 142	543
Backyard Rink	64.72% 321	22.78% 113	12.50% 62	496
Golf Dome	36.25% 207	50.26% 287	13.49% 77	571
Tin Fish	16.23% 98	65.73% 397	18.05% 109	604
Trail System	42.07% 220	39.20% 205	18.74% 98	523
Driving Range	27.44% 160	47.51% 277	25.04% 146	583
Braemar Golf Course	26.86% 159	43.24% 256	29.90% 177	592
Academy 9	52.51% 282	31.28% 168	16.20% 87	537
Other	76.50% 140	16.39% 30	7.10% 13	183

Q2 What types of trail uses would you like to see accommodated or expanded at Braemar Park?

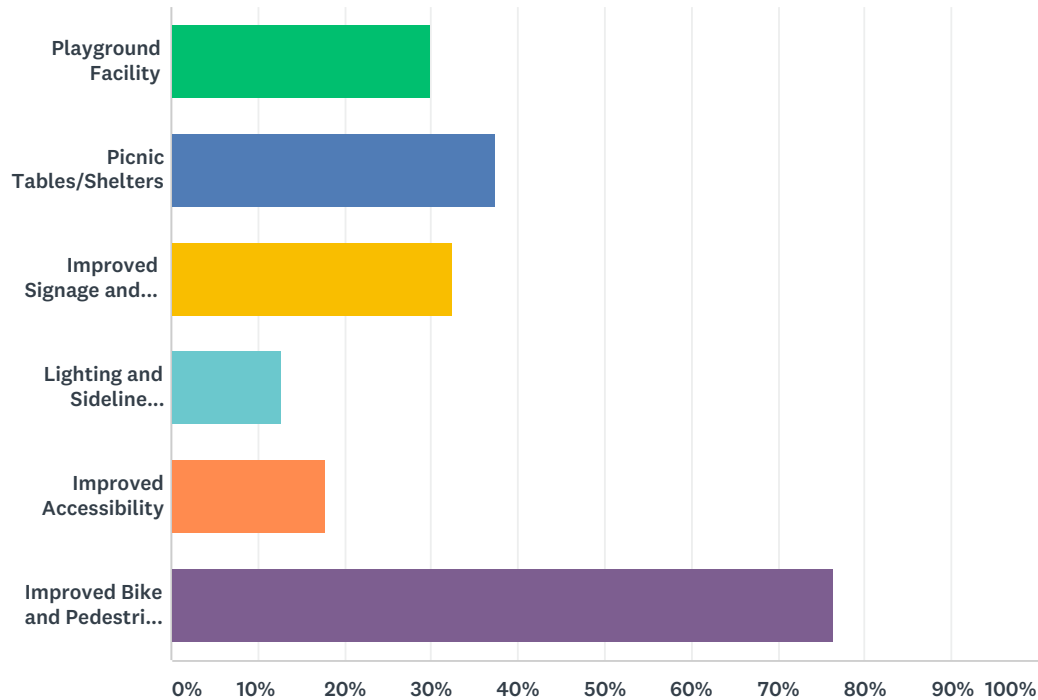
Answered: 650 Skipped: 18



(no label)				
	YES	NO	UNSURE	TOTAL
Summer Mountain Biking	51.52% 288	29.70% 166	18.78% 105	559
Summer Walking/Hiking/Running	87.13% 528	7.26% 44	5.61% 34	606
Winter Fat Tire Biking	33.53% 172	43.66% 224	22.81% 117	513
Winter Cross-Country Skiing	72.96% 421	16.81% 97	10.23% 59	577
Winter Snowshoeing	66.79% 374	16.96% 95	16.25% 91	560

Q3 What types of new amenities or improvements would you like to see at Braemar Park? (check all that apply)

Answered: 640 Skipped: 28



ANSWER CHOICES	RESPONSES	
Playground Facility	30.00%	192
Picnic Tables/Shelters	37.34%	239
Improved Signage and Wayfinding	32.50%	208
Lighting and Sideline Fencing Improvements on Premier Ball Field	12.81%	82
Improved Accessibility	17.81%	114
Improved Bike and Pedestrian Trail Circulation	76.41%	489
Total Respondents: 640		

PRELIMINARY ISSUES AND OPPORTUNITIES

COURTNEY FIELDS BASEBALL COMPLEX

- Upgrade Field #1 with new lighting & side line fencing
- Provide expanded grand stand seating on Field #1
- Improve storage facilities in concession/restroom building
- Identify opportunities for adding new park amenities near ballfield area
 - play area
 - picnic shelter
 - patio/seating area

BUILDING & PARKING FACILITIES

- Upgrade building entry experience to Braemar Arena
- Identify opportunities for improving landscape/storm water treatment areas for parking lots
- Provide gateway park entry/wayfinding signage at frontage road intersection

PUBLIC SAFETY & WORKS FACILITIES

- Maintain adequate buffers with maintenance facilities
- Identify opportunities for expanding trail circulation within natural resource areas
- Develop management recommendations for improving the quality of natural resource areas

KEY TO MAP

- Zone 1 – Active Use Area
- Zone 2 – Operations/Maintenance Area
- Zone 3 – Oak Forest Area
- Zone 4 – Golf Course Area
- Zone 5 – Hardwood Wetland Area



BRAEMAR BOULEVARD

- Improve bike, pedestrian circulation, and lighting to create "parkway" feel for roadway
- Provide park entrance and wayfinding signage at entrance and roadway intersections

TRAIL SYSTEM

- Create looped perimeter trail system around perimeter of golf course
- Identify connections to be made to surrounding trail systems
- Maintain adequate buffers with golf course and adjacent residential properties

GOLF COURSE

- Identify opportunities for expanding public use of Braemar Club House
- Identify reuse opportunities for remnant golf course land
 - Golf practice area
 - Soccer field
 - Sledding hill

POTENTIAL NEW PARK PROGRAMMING OPPORTUNITIES

- Expand winter recreational use activities for mountain biking, cross country skiing, snow shoeing, sledding, and platform tennis
- Provide archery facility
- Natural resource interpretation
- Mountain bike skills course

OVERALL MASTER PLAN: CONCEPT A



OVERALL MASTER PLAN: CONCEPT B



PRELIMINARY GOLF COURSE SKI TRAIL LAYOUT PLAN



ENLARGEMENT 1: BRAEMAR GOLF COURSE SITE IMPROVEMENTS



30' NORTH

ENLARGEMENT 2: COURTNEY FIELDS SITE IMPROVEMENTS



TYPICAL TRAIL SECTIONS



PARKWAY TRAIL



PAVED TRAIL



SOFT SURFACE TRAIL



SINGLE TRACK MOUNTAIN BIKE TRAIL

MOUNTAIN BIKE TRAIL FEATURES



REPRESENTATIVE IMAGERY



BRAEMAR ARENA FACADE ENHANCEMENTS





CITY OF EDINA

4801 West 50th Street

Edina, MN 55424

www.edinamn.gov

Date: September 12, 2017

Agenda Item #: VII.B.

To: Parks and Recreation Commission

Item Type:

Report and Recommendation

From: Ann Kattreh, Parks & Recreation Director

Item Activity:

Subject: Comprehensive Plan Committee

Action

ACTION REQUESTED:

Select up to four members if the Parks & Recreation Commission to work on a Committee for the City of Edina Comprehensive Plan Update.

INTRODUCTION:

The majority of the work of this Committee and the Parks & Recreation Commission will be completed between October 2017 and February 2018.



CITY OF EDINA

4801 West 50th Street

Edina, MN 55424

www.edinamn.gov

Date: September 12, 2017

Agenda Item #: VII.C.

To: Parks and Recreation Commission

Item Type:
Report and Recommendation

From: Susan Faus, Assistant Director

Subject: 2018 PARC Work Plan

Item Activity:
Action

ACTION REQUESTED:

Approve the proposed 2018 Parks & Recreation Commission Work Plan.

INTRODUCTION:

Please be prepared to discuss your initiatives so that everyone has a good understanding of what each item entails. The 2018 PARC Work Plan must be submitted by September 22, 2017 for presentation by the Parks & Recreation Commission Chair to the City Council at the October 3 City Council Work Session.

ATTACHMENTS:

2018 PARC Work Plan

Board/Commission: Park Board

2018 Annual Work Plan Proposal

- *Complete each section with a white background
- *Liaisons need to fill out budget and staff support required
- *Return to MJ Lamon by September 23, 2017



Definitions:

New Initiative – not on previous work plan

Continued Initiative – carried over from a previous work plan with a revised target completion date

Ongoing Responsibility – annually on the work plan and may or may not have a target completion date

Initiative	Council Charge <input type="checkbox"/> 1 <input type="checkbox"/> 2 <input checked="" type="checkbox"/> 3 <input type="checkbox"/> 4	Target Completion Date	Budget Required (Staff Liaison)	Staff Support Required (Staff Liaison)
<input type="checkbox"/> New Initiative <input checked="" type="checkbox"/> Continued Initiative <input type="checkbox"/> Ongoing Responsibility Review and Recommend on Park Master and Natural Resources Plans – Arden Park, Braemar Park, Fred Richards Park, Weber Woods(partner with St. Louis Park)		December 2018	\$0	Ann Kattreh – 160 hours, Susan Faus- 100 hours, Janet Canton – 40 hours, Park Maintenance – 20 hours.
Liaison Comments: Click here to enter text.				
City Manager Comments: Click here to enter text.				
Progress Report: Arden – Julie Strother, Eileen McAwley. Braemar Park – Greg Good, Brenda McCormick, Mike Miller. Fred Richards – Eileen McAwley, Matt Dahlien, Dan Gieseke, Greg Good. Weber Woods – Matt Dahlien, Brenda McCormick, Koren Nelson, Julie Strother.				

Initiative	Council Charge <input type="checkbox"/> 1 <input checked="" type="checkbox"/> 2 <input type="checkbox"/> 3 <input type="checkbox"/> 4	Target Completion Date	Budget Required (Staff Liaison)	Staff Support Required (Staff Liaison)
<input checked="" type="checkbox"/> New Initiative <input type="checkbox"/> Continued Initiative <input type="checkbox"/> Ongoing Responsibility Funding Options (project plan)		Oct. 2018	\$0	Susan Faus – 120 hours
Liaison Comments: Click here to enter text.				
City Manager Comments: Click here to enter text.				
Progress Report: Mike Miller, Dan Gieseke.				

Initiative	Council Charge <input type="checkbox"/> 1 <input checked="" type="checkbox"/> 2 <input type="checkbox"/> 3 <input type="checkbox"/> 4	Target Completion Date	Budget Required (Staff Liaison)	Staff Support Required (Staff Liaison)
<input checked="" type="checkbox"/> New Initiative <input type="checkbox"/> Continued Initiative <input type="checkbox"/> Ongoing Responsibility		July 2018	\$0	Susan Faus – 100 hours

Marketing and Communications for Parks & Recreation			
Liaison Comments: Click here to enter text.			
City Manager Comments: Click here to enter text.			
Progress Report: Julie Stother, Matt Dahlien, Koren Nelson.			

Initiative	Council Charge <input checked="" type="checkbox"/> 1 <input type="checkbox"/> 2 <input type="checkbox"/> 3 <input type="checkbox"/> 4	Target Completion Date	Budget Required (Staff Liaison)	Staff Support Required (Staff Liaison)
<input checked="" type="checkbox"/> New Initiative <input type="checkbox"/> Continued Initiative <input type="checkbox"/> Ongoing Responsibility		Oct. 2018	\$0	Ann Kattreh – 40 hours, Susan Faus – 40 hours, Tiffany Bushland – 120 hours, Park Maintenance – 20 hours
Field Capacity and Utilization				
Liaison Comments: Click here to enter text.				
City Manager Comments: Click here to enter text.				
Progress Report: Greg Good, Eileen McAwley				

Initiative	Council Charge <input type="checkbox"/> 1 <input type="checkbox"/> 2 <input checked="" type="checkbox"/> 3 <input type="checkbox"/> 4	Target Completion Date	Budget Required (Staff Liaison)	Staff Support Required (Staff Liaison)
<input type="checkbox"/> New Initiative <input checked="" type="checkbox"/> Continued Initiative <input type="checkbox"/> Ongoing Responsibility		Dec. 2018	\$0	Ann Kattreh – 200 hours
Assist as requested with the development of the City's new Comprehensive Plan				
Liaison Comments: Click here to enter text.				
City Manager Comments: Click here to enter text.				
Progress Report: PARC				

Parking Lot: (These items have been considered by the BC, but not proposed as part of this year's work plan. If the BC decides they would like to work on them in the current year, it would need to be approved by Council.)
Environmental Stewardship

Proposed Month for Joint Work Session (one time per year, up to 60 minutes):	
---	--

Council Comments:



CITY OF EDINA

4801 West 50th Street

Edina, MN 55424

www.edinamn.gov

Date: September 12, 2017

Agenda Item #: VIII.A.

To: Parks and Recreation Commission

Item Type:
Correspondence

From: Ann Kattreh, Parks & Recreation Director

Subject: City Council Updates Aug. 15 and Sept. 6, 2017

Item Activity:
Information

ACTION REQUESTED:

INTRODUCTION:

ATTACHMENTS:

City Council Updates Aug. 15 and Sept. 6, 2017

City Council Updates

By Scott Neal

Aug. 15, 2017

- Rejected bids for the proposed Centennial Lakes Park Bridge Replacement Project. The city will rebid the project later this winter with hopes of construction next year.
- Approved the purchase of a new evaporative condenser for the south rink at Braemar Arena.

Sept. 6, 2017

- A public hearing was held on the Concept Plan for Arden Park. City Council will make a decision at the Sept. 19 City Council meeting.



CITY OF EDINA

4801 West 50th Street

Edina, MN 55424

www.edinamn.gov

Date: September 12, 2017

Agenda Item #: VIII.B.

To: Parks and Recreation Commission

Item Type:
Correspondence

From: Ann Kattreh, Parks & Recreation Director

Item Activity:

Subject: Correspondence Received through Sept. 6, 2017

ACTION REQUESTED:

INTRODUCTION:

ATTACHMENTS:

Correspondence received through Sept. 6



The dam with water (on left) and when dry (on right)

Input

project development a business plan alternative

May 18 7:22 PM



FEATURED PROJECT

nehaha Creek Preserve

ies): *St. Louis*

watershed:

nehaha Creek

watershed

is: Completed





Sun Sailor



Sun Sailor | Stretch of Minnehaha Creek in St. Louis Park to ...

A completed section of Minnehaha Creek by Methodist Hospital in St. Louis Park. (Photo by Seth Rowe – Sun Newspapers)

