



Date: January 18, 2017

To: Mayor and City Council

From: Nick Bauler, Traffic Safety Coordinator

Subject: Traffic Safety Report of December 07, 2016

Information / Background:

The Traffic Safety Committee (TSC) review of traffic safety matters occurred on December 7. The City Engineer, Assistant City Planner, Traffic Safety Coordinator, Police Lieutenant, Public Works Director, Traffic Safety Specialist and Transportation Planner were in attendance for this meeting. The Public Works Director and Assistant City Planner were informed of the decisions and did not object to the recommendations.

For these reviews, the recommendations below are provided. On each of the items, persons involved have been contacted and the staff recommendation has been discussed with them. They were informed that if they disagree with the recommendation or have additional facts to present, these comments can be included on the December 15 Edina Transportation Commission and the January 18 City Council meeting agendas.

Section B: Items which staff recommends for no action

B1. Request to add a directional sign for the Chapel Hills United Church of Christ

- Church also functions as a polling station and used for local neighborhood association meetings.
- Located on Vernon Avenue, west of the Vernon Avenue and Gleason Road intersection.
- Concerns include misunderstanding of the Gleason Road and Vernon Avenue intersection and the location of the church.



Map: Circle on left is location of Chapel Hills United Church of Christ. Circle on right is location of Vernon Avenue transitioning into Gleason Road.

- Requesters are looking for a sign with arrows directing vehicles at Gleason and Vernon intersection.

After review, staff recommends not placing directional signs along Vernon Avenue, as Vernon Avenue is a County road. Vernon Avenue and Gleason Road intersection does include directional arrows indicating Vernon Avenue continuing west.

B2. Request to place reflective strips on electrical poles along the new sidewalks on Interlachen Boulevard.

- New sidewalks have been constructed on the south side of Interlachen Boulevard between Mirror Lakes Drive to Interlachen Bluff.
- Requestor is worried about pedestrians walking into these poles when it is dark outside.
- The sidewalk weaves around light and electrical poles.
- ADT of Interlachen Boulevard at the new sidewalks range from 8,500 to 9,500.
- 11 light poles are within one foot of newly placed sidewalk.

Photo: Light poles located within 1' of new sidewalk on Interlachen Boulevard



After review, staff recommends not placing any reflective strips on any utility poles maintained by Excel Energy as it could lead to distracting motorists. Staff believes Interlachen Boulevard provides proper lighting for pedestrians using the newly placed sidewalk.

B3. Resident is concerned vehicles are not stopping for pedestrians at crosswalk on Hazelton Road and the Edina Promenade.

- Resident says westbound vehicles have difficulty seeing pedestrians at late afternoon hours as sun is setting and difficult to see crossing pedestrians.
- Total times the crosswalk is used in an average day is 428.
- Peak hours of crossing are from 5pm to 7pm.
- Peak hour flashers were used 39 times and flashers were not used 49 times.
- On average, the pedestrian flashers are pressed 180 times (42% of crosses). Pedestrians did not use the flashers 248 times (58% of crosses).
- Westbound traffic did not stop during 18 total crosses (4% of pedestrian crosses).

Map: Location of Edina Promenade at Hazelton Road



Photo: Pedestrian crosswalk which includes amber flashers on pedestrian sign to the right and above the crosswalk.

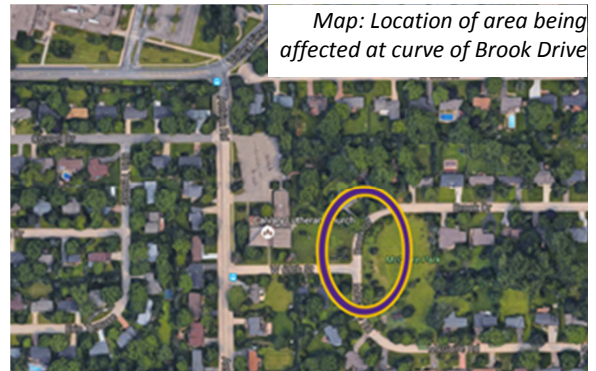
- Eastbound traffic did not stop during 10 total crosses (2% of pedestrian crosses).
- Crosswalk has an island for pedestrians to reduce exposure time for vehicles.
- Flashers last 30 seconds when pressed.

After review, staff recommends no action at this crosswalk with such a low percent of vehicles refusing to stop for pedestrians. Staff feels more than adequate with the current crosswalk design.

B4. Request to change parking in neighborhood near Edina High School

- Resident believes on street parking is unsafe for neighbors.
- Nearby, new 'No Parking' signs placed on W. 69th Street are causing students to park on Brook Drive.
- Parking has been taking place from 8:15 am to 3:30 pm weekdays.
- Resident requesting enforcing six-hour parking limit.
- Vehicles tend to park from W. 69th Street past the curve on Brook Drive.
- Width of Brook Drive at curve is 29.5'.

After review, staff recommends taking no action as this is a temporary issue with Edina High School construction renovations taking up one parking lot and being able to offer approximately 100 less parking spaces for students this school year.



B5. Request to temporarily allow students to park in residential streets with 'No Parking' near Edina High School

- Construction at Edina High School is leading to a lack of parking available for students (approx. 100 spaces).
- Students have begun parking on Antrim Road, W. 69th Street and Brook Drive.
- New 'No Parking' signs have been placed on the south side of W. 69th



Photo: Area in purple currently has no parking from 8 am to 4 pm. Area in red is where students have been parking.

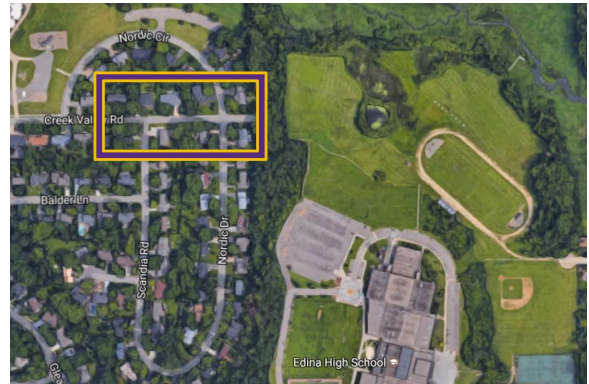
Street.

- A “No Parking from here to corner” at the intersection of Antrim Road and Chapel Drive was moved to prevent vehicles from parking in the southbound bike lane, removing 4-5 parking spaces previously used.
- ‘No Parking 8 am – 4 pm Weekdays’ signs have been in place since 2005 on Chapel Lane and Chapel Drive.

See B.4 above.

B6. Residents requested to enforce street parking during school hours near Creek Valley Road

- Creek Valley Road is located near the northwest parking lot at Edina High School.
- One parking lot is full of construction equipment for Edina High School expansion.
- Residents have counted over 20 vehicles parking along Creek Valley Road in many instances.
- The width of Creek Valley Road is 29 feet.
- Residents concerned for adequate space for operational vehicles with parking on both sides of the street.
- Temporary ‘No Parking’ signs were placed on the north side of Creek Valley Road for one week, were removed after further discussion.



See B.4 above.

Section D: Other Traffic Safety Items handled

D1. A requestor was concerned of the location of a “No Parking from here to corner”. Where the sign is placed, drivers believe they can park in a tapered section of a bike lane heading southbound on Antrim Road. This sign has been moved 90 feet south to allow parking once the bike lane has straightened with the road.

D2. A requestor had a concern of replacing plants through the three 70th Street roundabouts as it made sight lines difficult for vehicles entering the roundabouts. After reviewing all entrances, no changes are deemed necessary when vehicles yield appropriately at entrances of these roundabouts.

D3. A resident was looking for a “Dead End” to be placed at the corner of Ewing Avenue South and W. 65th Street. The resident was concerned of vehicles driving onto their driveway with the intent to

reach France Avenue. This sign was added after the Strachauer Park A reconstruction project was completed.

D4. A resident who lives on West 44th Street was looking for a couple 'No Parking' signs to be bagged for an event on a past Sunday. After speaking with the Edina Police Department and the resident, the resident was informed the Edina Police Department will no longer be bagging 'No Parking' signs.

D5. A resident was concerned potential customers didn't understand the detour for the road work at the 70th street bridge. Road work has been completed and is no longer an issue.