

Agenda
Parks and Recreation Commission
City Of Edina, Minnesota
Braemar Golf Course - 6364 John Harris Dr.

Tuesday, November 1, 2022
7:00 PM

- I. Call To Order
- II. Roll Call
- III. Approval Of Meeting Agenda
- IV. Approval Of Meeting Minutes
 - A. Minutes: Parks & Recreation Commission Oct. 11, 2022
- V. Special Recognitions And Presentations
 - A. Pedestrian and Bicycle Master Plan Presentation
- VI. Community Comment

During "Community Comment," the Board/Commission will invite residents to share relevant issues or concerns. Individuals must limit their comments to three minutes. The Chair may limit the number of speakers on the same issue in the interest of time and topic. Generally speaking, items that are elsewhere on tonight's agenda may not be addressed during Community Comment. Individuals should not expect the Chair or Board/Commission Members to respond to their comments tonight. Instead, the Board/Commission might refer the matter to staff for consideration at a future meeting.

- VII. Reports/Recommendations
 - A. Braemar Golf Operations Update
 - B. Proposed Parks & Recreation Fees for 2023
 - C. 2022 Work Plan Updates
- VIII. Chair And Member Comments
- IX. Staff Comments
 - A. Informational Items
 - B. Upcoming Meetings and Events
- X. Adjournment

The City of Edina wants all residents to be comfortable being part of the public

process. If you need assistance in the way of hearing amplification, an interpreter, large-print documents or something else, please call 952-927-8861 72 hours in advance of the meeting.



CITY OF EDINA

4801 West 50th Street

Edina, MN 55424

www.edinamn.gov

Date: November 1, 2022

Agenda Item #: IV.A.

To: Parks and Recreation Commission

Item Type:

Minutes

From: Perry Vetter, Parks & Recreation Director

Item Activity:

Subject: Minutes: Parks & Recreation Commission Oct. 11, 2022

Action

ACTION REQUESTED:

Approve minutes from the Oct. 11, 2022 Parks & Recreation Commission meeting.

INTRODUCTION:

ATTACHMENTS:

Minutes: Parks & Recreation Commission Oct. 11, 2022



Minutes
City of Edina, Minnesota
Edina Parks & Recreation Commission
Braemar Golf Course
October 11, 2022
7 p.m.

I. Call to Order

Vice-Chair Good called the meeting to order at 7:02 p.m.

II. Roll Call

Answering roll call were Commissioners Doscotch, Good, Ites, Pfuhl, Spanhake, Weaver and Welsh
Commissioner Strother arrived at 7:06 p.m. and Student Commissioner DeFor arrived at 7:04 p.m.

Absent: Commissioner Hass and Student Commissioner Horsager

Staff Present: Staff Liaison Perry Vetter, Assistant Director Parks and Natural Resources Tom Swenson and Administrative Coordinator Janet Canton

III. Approval of Meeting Agenda

***Motion made by Pfuhl to approve the meeting agenda. Motion seconded by Spanhake.
Motion carried.***

IV. Approval of Meeting Minutes

***Motion made by Doscotch to approve the Sept. 13, 2022 minutes. Motion seconded by Pfuhl.
Motion carried.***

V. Community Comment

None

VI. Reports/Recommendations

A. 2022 Work Plan Discussion

Initiative #1 – Present Information about Parks and Recreation Facilities, Services, and Systems with up to Six Community Groups. Commissioner Good gave an update on the slow but steady progress of initiative #1.

Initiative #2 – Report and provide recommendations on alternative funding sources for park related improvements including parks, facilities, and enterprise upgrades. No update on initiative #2. Questions were asked about output of initiative.

Initiative #3 – Research Opportunities to Expand Volunteer Assistance for Park Initiatives. No update on initiative #3.

Initiative #4 – Provide Support with Educational Opportunities for the Local Option Sales Tax in the Community as Needed. Staff Liaison Vetter gave an update on the presentations that have been given to various clubs and groups.

Initiative #5 – Review and Comment on Amendments to the Park Ordinances Being Recommended by Staff for Update. Commissioners have completed their work on this initiative.

Initiative #6 – Review and Comment on the Proposed Grandview Plan. Staff Liaison Vetter gave an update that the City Council made an action to finalize the rezoning last Thursday.

VII. Chair and Member Comments

A. 2023 Work Plan Development Discussion

Chair Ites informed the commission that the presentation to the City Council went well and asked about student involvement.

VIII. Staff Comments

A. Informational Items

Staff Liaison Vetter gave the following updates:

- The Arts and Culture Commission worked on a sidewalk poetry project in Edina parks with the Edina High School's Project Earth
- Arena parking lot was repaved
- Sports Dome and Field begins installation on Oct. 21
- Last day of outdoor play at Golf Course on Oct. 31
- Update given on Strachauer Park master planning process
- Rescheduled Walk with the Mayor will be on Saturday, Oct. 15 at 9 a.m. at Braemar Park.

B. Upcoming Meetings and Events

Regular November meeting will be one week early, on Nov. 1 due to the election. Presentation on grand rounds trail concept and status will be given by transportation planner, Andrew Scipioni.

IX. Adjournment

Motion made by Strother to adjourn the Oct. 11, 2022 meeting at 7:33 p.m. Motion seconded by Pfuhl. Meeting adjourned.



CITY OF EDINA

4801 West 50th Street

Edina, MN 55424

www.edinamn.gov

Date: November 1, 2022

Agenda Item #: V.A.

To: Parks and Recreation Commission

Item Type:

Other

From: Perry Vetter, Parks and Recreation Director

Item Activity:

Subject: Pedestrian and Bicycle Master Plan Presentation

Information

ACTION REQUESTED:

None, this is an informational presentation only.

INTRODUCTION:

Andrew Scipioni, the City of Edina's Transportation Planner, will present on the Pedestrian and Bicycle Master Plan. Members of other city commissions have also been invited to this meeting to receive the information.



CITY OF EDINA

4801 West 50th Street

Edina, MN 55424

www.edinamn.gov

Date: November 1, 2022

Agenda Item #: VII.A.

To: Parks and Recreation Commission

Item Type:

Report and Recommendation

From: Tracy Petersen, Assistant Director-Recreation & Facilities

Item Activity:

Subject: Braemar Golf Operations Update

Information

ACTION REQUESTED:

None, informational only.

INTRODUCTION:

Braemar Golf Course General Manager, Joe Abood, will provide a recap of the 2022 golf course season.

ATTACHMENTS:

Braemar Golf Update



The CITY of
EDINA

Braemar Golf Update

Park & Recreation Commission – November 1, 2022



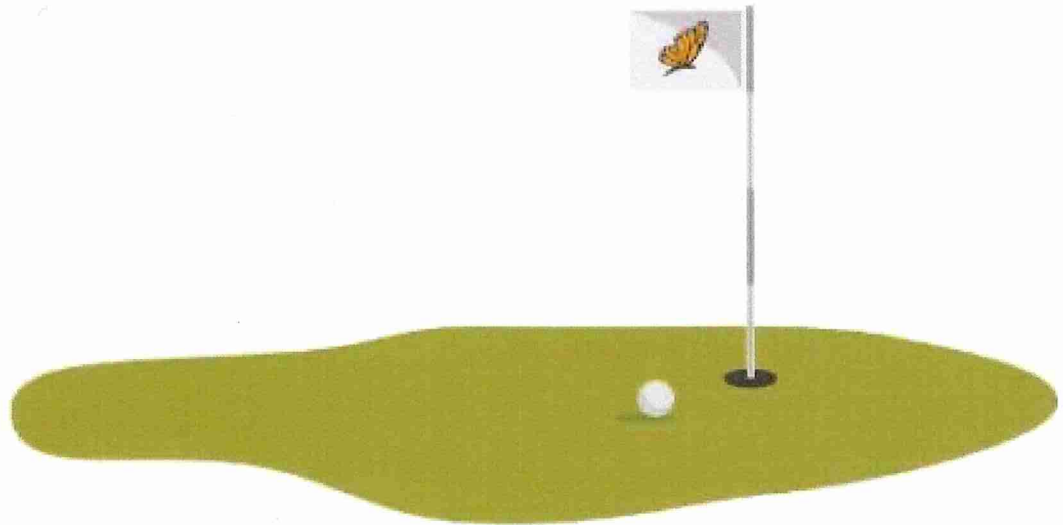
Operation Monarch (January 6, 2014)



The CITY of
EDINA

Objective

To offer a premier golfing experience that produces a financially self-sufficient Golf Enterprise.



Six Step Strategy (March 4, 2014)



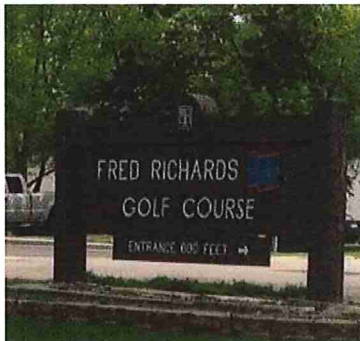
The CITY of
EDINA

1. Narrow the Scope of Golf Enterprise
2. Invest in improvements at Braemar
3. Modify prices and discounts
4. Outsource ancillary services
5. Expand Marketing
6. Improve customer service

Narrow the Scope of Golf Enterprise



The CITY of
EDINA



Invest in improvements at Braemar



The CITY of
EDINA

- Expand Driving Range
- Convert Executive Course to Par 3 (The Academy 9)
- Renovate Championship 18
- Renovate Clubhouse



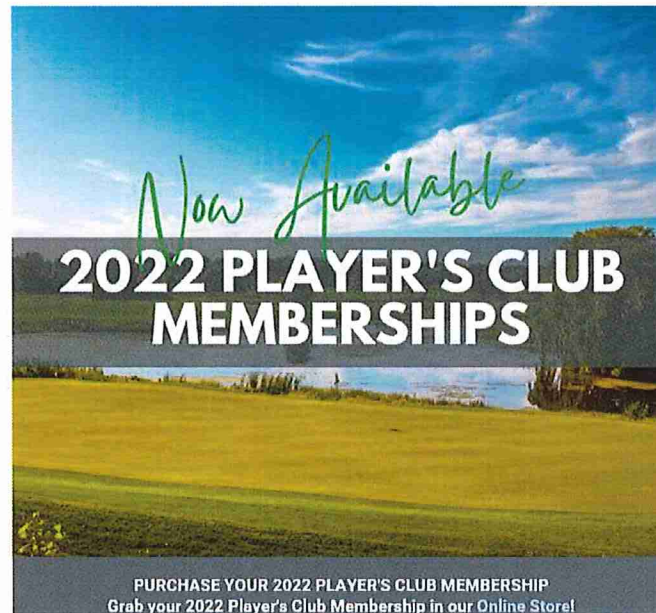
Modify prices and discounts



The CITY of
EDINA



BRAEMAR
GOLF COURSE



Outsource ancillary services



The CITY of
EDINA



Expand Marketing



The CITY of
EDINA

- Customer Database – 43,371



- Braemar Golf Course Facebook – 2,300



- Braemar Golf Instagram – 1,028



Improve customer service



The CITY of
EDINA





The CITY of
EDINA

Total Operating Revenue

Total Operating Revenue



Operating Income



The CITY of
EDINA

Operating Income



Green Fees



The CITY of
EDINA

Green Fees



Cart Fees



The CITY of
EDINA

Cart Fees



Driving Range



The CITY of
EDINA

Driving Range



Pro Shop Sales



The CITY of
EDINA

Pro Shop Sales

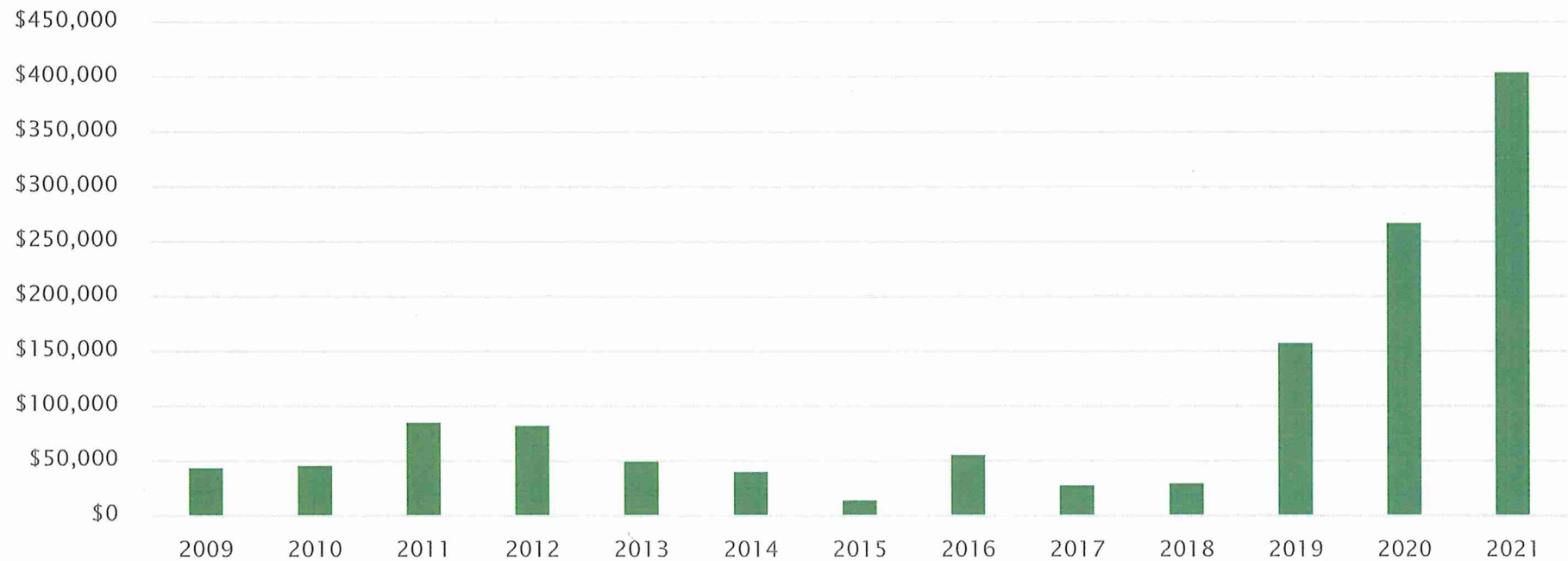


Lessons



The CITY of
EDINA

Lessons

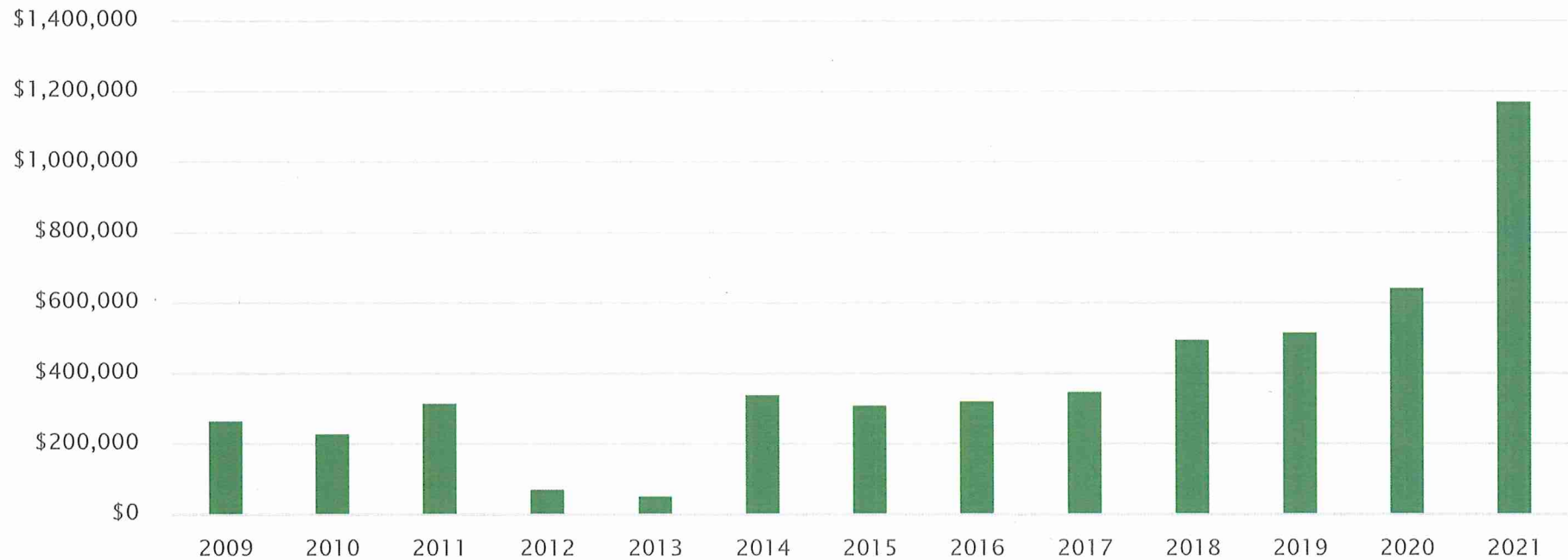


Golf Dome – Powered by TopTracer



The CITY of
EDINA

Golf Dome



2022 Year to Date (Sept. 30, 2022)



The CITY of
EDINA

- YTD Total Revenue 2022 - \$5,154,390 vs. 2021 – \$4,623,033
- YTD Total Expenses 2022 – **(\$3,732,812)** vs. 2021 – **(\$3,465,227)**
- YTD Net Operating Income 2022 - \$1,421,577 vs. 2021 - \$1,157,806
- YTD Golf Dome 2022 - \$1,227,311 vs. 2021 – \$835,198
- YTD Green Fees 2022 - \$1,795,969 vs. 2021 – \$1,904,929
- YTD Memberships 2022 - \$252,058 vs. 2021 – \$184,841
- YTD Pro Shop Sales 2022 - \$303,442 vs. 2021 – \$262,020
- YTD Total Cost Recovery 2022 – 138% vs. 2021 – 133%



The CITY of
EDINA

2021 - 2022 Highlights

- Over 600 kids in our spring and summer youth classes.
- 130 total programs for spring and summer (adult and youth).
- 109 – PGA Junior League players in the summer program at Braemar
2021 Largest Program in Minnesota
2021 Top 25 Largest Program in the United States
- 2,307 Player's Club memberships sold YTD in 2022 (2,158 in 2021)
- Total weekly league rounds = 909 (841 in 2021)
- 2022 Total for League Prepayments = \$383,534.39 (green fees only)
- Two GRAA Top 50 Range Awards – Dome & Driving Range
- Two TopTracer Tracie Awards – Best League Program & Leaderboard Dominator

Questions



The CITY of
EDINA





CITY OF EDINA

4801 West 50th Street

Edina, MN 55424

www.edinamn.gov

Date: November 1, 2022

Agenda Item #: VII.B.

To: Parks and Recreation Commission

Item Type:

Report and Recommendation

From: Tracy Petersen, Assistant Director-Recreation & Facilities

Item Activity:

Subject: Proposed Parks & Recreation Fees for 2023

Action

ACTION REQUESTED:

Annually the Parks & Recreation Commission is asked to review and recommend fees to the City Council. The City Council then reviews and adopts a formal resolution authorizing fees for the upcoming calendar year.

INTRODUCTION:

Staff requests that the Parks & Recreation Commission review and recommend the attached proposed 2023 Parks & Recreation Fees to the City Council. This includes Braemar Arena & Field, Braemar Golf Course & Golf Dome, Centennial Lakes Park, Edinborough Park and the Edina Aquatic Center.

ATTACHMENTS:

Staff Report Proposed Parks & Recreation Fees for 2023

Proposed Parks & Recreation Fees for 2023



Date: November 1, 2022

To: Parks and Recreation Commission

From: Tracy Petersen, Assistant Director-Recreation & Facilities

Subject: Proposed Parks & Recreation Fees for 2023

Information / Background:

Annually the Parks & Recreation Commission is asked to review and recommend fees to the City Council. The City Council then reviews and adopts a formal resolution authorizing fees for the upcoming calendar year.

Fee Philosophy

Traditionally fees are set based upon several factors such as a corresponding market comparison of similar or like offerings at neighboring communities, fee history, customer satisfaction, operating budget and cost recovery expectations.

The blend of these philosophies establishes a fee range that provides equal opportunity, affordability, and accessibility to users and guests that utilize our facilities. It also provides an opportunity to cover costs whenever possible.

Factors impacting Costs

Several factors are considered when establishing cost increases to the proposed 2023 rates. Among the most notable are:

- Ability to recruit, train and retain high quality and appropriate number of staff (both full-time and seasonal) for programs and facilities. This has included increases in not only hourly wages, but costs associated with incentive offerings for various positions, such as lifeguards and program staff.
- Ensuring that we maintain a high level of customer service at each of our facilities by being able to recruit an appropriate number of staff.
- Ability to navigate cost pressures, supply chain issues and increased costs with contractor and specialty repairs due to high demand for trade providers/vendors. Based on recent Consumer Price Indexes(CPI), costs across the board have increased 8.20%. In addition, utilities (gas, electricity, natural gas) have seen increases ranging from 15.5%-33.10%.
- Maintain a quality and valued product that is well operated, maintained and safe.

Revenue Sources

Each facility's revenue sources are unique and are highlighted below in greater detail:

Aquatic Center

- An increase of 7% is being proposed for all season passes.
- Proposed overall pricing keeps us in line with similar facilities such as St. Louis Park, Richfield, Bloomington and Eagan.
- Cost of continued repairs to mechanical and operational items at the aquatic center continue to be a key factor.
- On-going challenges with seasonal pay/staffing continue to impact our operational pricing structure.

Braemar Golf Operations

- Increases are being recommended for green fees, player's card, driving range and Braemar Courtyard. These proposed changes maintain a continued consistency in a high-level product and service.
- A number of minimal price increases are being recommended for the golf dome. These changes would not go into effect until November 2023 as the golf dome season runs from Nov.-April. This is to avoid having rate changes during the same season at the dome.
- On-going challenges with seasonal pay/staffing will continue to impact our operational pricing structure.
- Industry standard and similar facilities for golf course comparison include Chaska Town Course, Edinborough USA, Brookview Golf Course, Keller Golf Course and Baker National Golf Course.

Braemar Ice Arena/Field

- An increase of the prime-time & non-prime-time ice rates are being recommended. This puts our rates for prime-time ice in the top 3% percentile compared to neighboring cities. Non-prime pricing is also higher than other comparable ice rinks, but Braemar Arena demand is higher.
- Some prices have been restructured and/or eliminated to be more in line for how we have operated post pandemic. (Punch cards, developmental ice, open skating memberships, etc.)
- Braemar Field fee increases for youth athletic associations would go into effect for the fall of 2023 season.
- On-going challenges with seasonal pay/staffing will continue to impact our operational pricing structure.

Centennial Lakes Park

- Rental rates have been slightly restructured to match current operational practices.
- No increases for rental concession items are being recommended for this year.
- On-going challenges with seasonal pay/staffing will continue to impact our operational pricing structure.

Edinborough Park

- Birthday party package proposed rates are more in line with other facilities offering similar type packages such as Shoreview Community Center, New Brighton Eagle's Nest and Bloomington Kid's Empire.
- A 10% increase on a Playpark Annual Membership is being proposed. This equates to an Edina resident member visiting 14 times in a calendar year to pay for their membership. The number of visits required to break-even is reduced for each additional member.
- On-going challenges with seasonal pay/staffing will continue to impact our operational pricing structure.

Parks and Recreation

- A number of the rental fees for athletic association fields, park buildings and picnic shelters are proposed with a minimal increase for the upcoming season.
- Staff is not recommending any increase to the per participant user fee for athletic fields, gymnasiums, or outdoor rinks.
- Staff has added a recommended fee for certain shelter buildings not typically rented but should have an established fee in case of a need for use.
- Staff is not recommending an increase for Arneson Acres due to current fees being at top market rate for similar type space.

Action Requested:

Staff requests that the Parks & Recreation Commission review and recommend the attached proposed 2023 Parks & Recreation Department fees to the City Council. This includes Braemar Arena & Field, Braemar Golf Course & Golf Dome, Centennial Lakes Park, Edinborough Park, and the Edina Aquatic Center.

Proposed 2023 Parks and Recreation Fees

Note: fees listed do not include tax

ADULT ACTIVITIES			
Garden Plot	2022	2023	COMMENTS
Community Garden Plot: 10 x 10	\$45	\$45	
Community Garden Plot: 10 x 15	\$50	\$50	

AQUATIC CENTER			
Season Passes			COMMENTS
Resident Rates	2022	2023	
Purchased by April 30, 2023 (Early Bird Rate):			
Individual or First Family Member	\$78	\$84	7% increase on all season passes
Each Additional Member	\$71	\$77	
Purchased after April 30, 2023 (Regular Rate):			
Individual or First Family Member	\$88	\$94	
Each Additional Member	\$81	\$87	
Non-Resident Rates			
Purchased by April 30, 2023 (Early Bird Rate):			
Individual or First Family Member	\$100	\$107	
Each Additional Member	\$91	\$98	
Purchased after April 30, 2023 (Regular Rate):			
Individual or First Family Member	\$110	\$117	
Each Additional Member	\$101	\$108	

FlowRider	2022	2023	COMMENTS
Daily Admission FlowRider Additional/Per Person	\$6.50	\$6.50	
Rental and Instruction: 30 minutes	\$80	NA	Discontinue; not used due to not providing enough time for instruction
Rental and Instruction: 1 hour	\$150	\$180	

Daily Admissions	2022	2023	COMMENTS
Daily Admission (Resident & Non-Resident)	\$12.10	\$12.10	Increased in 2022 - appropriately priced compared to like service providers
Admission after 5 p.m.	\$9.25	\$9.25	
Daily Admission FlowRider Additional/Per Person	\$6.50	\$6.50	
Group Reservation Rate	\$10	\$10	

Lane Rentals	2022	2023	COMMENTS
Aqua Jets	\$19/hr	\$22/hr	
Edina Swim Club Only	\$14/hr	\$17/hr	

Birthday Party Packages - 2 hours	2022	2023	COMMENTS
Low Tide Package	\$295	\$295	
High Tide Package	\$395	\$395	

BRAEMAR GOLF COURSE			
Green Fees	2022	2023	COMMENTS
Weekday 18 Hole Daily Fee "Prepayment Online"	\$49.50	\$51.30	Increase is based off new full rate minus 10% online savings
Weekday 18 Hole Daily Fee	\$55	\$57	
Weekday 18 Hole Player's Club Member "Prepayment Online"	\$36.90	\$38.70	Increase is based off new full rate minus 10% online savings

Proposed 2023 Parks and Recreation Fees

Note: fees listed do not include tax

Weekday 18 Hole Player's Club Member	\$41	\$43	
Weekday 18 Hole Daily Fee: Senior "Prepayment Online"	\$44.10	\$45.90	Increase is based off new full rate minus 10% online savings
Weekday 18 Hole Daily Fee: Senior	\$49	\$51	
Weekday 18 Hole Player's Club Member: Senior "Prepayment Online"	\$34.20	\$36.00	Increase is based off new full rate minus 10% online savings
Weekday 18 Hole Player's Club Member: Senior	\$38	\$40	
Weekday 18 Hole Daily Fee: Junior "Prepayment Online"	\$24.30	\$26.10	Increase is based off new full rate minus 10% online savings
Weekday 18 Hole Daily Fee: Junior	\$27	\$29	
Weekday 9 Hole Daily Fee "Prepayment Online"	\$27	\$27.90	Increase is based off new full rate minus 10% online savings
Weekday 9 Hole Daily Fee	\$30	\$31	
Weekday 9 Hole Player's Club Member "Prepayment Online"	\$21.60	\$22.50	Increase is based off new full rate minus 10% online savings
Weekday 9 Hole Player's Club Member	\$24	\$25	
Weekday 9 Hole Daily Fee: Senior "Prepayment Online"	\$25.20	\$26.10	Increase is based off new full rate minus 10% online savings
Weekday 9 Hole Daily Fee: Senior	\$28	\$29	
Weekday 9 Hole Player's Club Member: Senior "Prepayment Online"	\$18.90	\$19.80	Increase is based off new full rate minus 10% online savings
Weekday 9 Hole Player's Club Member: Senior	\$21	\$22	
Weekday 9 Hole Daily Fee: Junior "Prepayment Online"	\$16.20	\$17.10	Increase is based off new full rate minus 10% online savings
Weekday 9 Hole Daily Fee: Junior	\$18	\$19	
Weekend 18 Hole Daily Fee "Prepayment Online"	\$54.90	\$56.70	Increase is based off new full rate minus 10% online savings
Weekend 18 Hole Daily Fee	\$61	\$63	
Weekend 18 Hole Player's Club Member "Prepayment Online"	\$41.40	\$43.20	Increase is based off new full rate minus 10% online savings
Weekend 18 Hole Player's Club Member	\$46	\$48	
Weekend 18 Hole Player's Club Member: Senior "Prepayment Online"	\$38.70	\$40.50	Increase is based off new full rate minus 10% online savings
Weekend 18 Hole Player's Club Member: Senior	\$43	\$45	
Weekend 18 Hole Daily Fee: Junior after 1 p.m. "Prepayment Online"	\$27	\$28.80	Increase is based off new full rate minus 10% online savings
Weekend 18 Hole Daily Fee: Junior after 1 p.m.	\$30	\$32	
Weekend 9 Hole Daily Fee "Prepayment Online"	\$30.60	\$31.50	Increase is based off new full rate minus 10% online savings
Weekend 9 Hole Daily Fee	\$34	\$35	
Weekend 9 Hole Player's Club Member "Prepayment Online"	\$25.20	\$26.10	Increase is based off new full rate minus 10% online savings
Weekend 9 Hole Player's Club Member	\$28	\$29	
Weekend 9 Hole Player's Club Member: Senior "Prepayment Online"	\$23.40	\$24.30	Increase is based off new full rate minus 10% online savings
Weekend 9 Hole Player's Club Member: Senior	\$26	\$27	
Weekend 9 Hole Daily Fee: Junior after 1 p.m. "Prepayment Online"	\$18	\$18.90	Increase is based off new full rate minus 10% online savings
Weekend 9 Hole Daily Fee: Junior after 1 p.m.	\$20	\$21	
League Prepayment Weekday Morning 9-Holes	\$365.67	\$409.32	
League Prepayment Weekday Evening 9-Holes	\$322.65	\$341.10	
League Prepayment Weekday Morning 18-Holes	\$648.89	\$722.88	
League Prepayment Weekend Morning 18-Holes	\$722.16	\$810	

Player's Club	2022	2023	COMMENTS
Platinum Player's Club: Edina Resident	\$99	\$109	Have not increased since the golf course renovation
Gold Player's Club: Non-Resident	\$139	\$159	Have not increased since the golf course renovation
League	\$99	\$109	Have not increased since the golf course renovation

Computerized Handicaps	2022	2023	COMMENTS
Player's Club Member	\$41	\$41	
Non-Player's Club Member	\$49	\$49	

Club Rental and Push Carts	2022	2023	COMMENTS
Championship 18 Club Rental: Premium	\$45	\$45	
Academy 9 Club Rental	\$10	\$10	
Push Carts: 9 Hole	\$5	\$5	
Push Carts: 18 Hole	\$9	\$9	

Proposed 2023 Parks and Recreation Fees

Note: fees listed do not include tax

Golf Cars	2022	2023	COMMENTS
18 Hole Daily Fee	\$33	\$33	
18 Hole Player's Club Member	\$31	\$31	
9 Hole Daily Fee	\$20	\$20	
9 Hole Player's Club Member	\$19	\$19	

Golf Outing	2022	2023	COMMENTS
Monday Morning Shotgun	\$81.50	\$88.50	More in line with similar industry standard facilities; now includes cost of range balls
Monday Mid-Morning Shotgun	NA	\$92	New time slot offering
Friday Morning Shotgun	\$84.50	\$94.50	More in line with similar industry standard facilities; now includes cost of range balls
Friday Afternoon Shotgun	\$99	\$99	
Monday-Thursday Tee Time Start Outing	\$70.50	\$78.50	More in line with similar industry standard facilities; now includes cost of range balls
Friday-Sunday Tee Time Start Outing	\$76.50	\$84.50	More in line with similar industry standard facilities; now includes cost of range balls
Drive, Chip & Putt Clinics	\$49	NA	Discontinue; do not offer these clinics

Braemar Courtyard	2022	2023	COMMENTS
Single Lane: Edina Resident	\$20/hr	\$25/hr	More in line with similar industry standard facilities
Single Lane: Player's Club Member	\$20/hr	\$25/hr	More in line with similar industry standard facilities
Single Lane: Non-Resident	\$25/hr	\$30/hr	More in line with similar industry standard facilities
Half-Court	\$75/hr	\$90/hr	More in line with similar industry standard facilities
Full-Court	\$150/hr	\$180/hr	More in line with similar industry standard facilities

Contracted Programs	2022	2023
Golf Professionals	Varies	Varies

Braemar Room	2022	2023	COMMENTS
Cooper Conference Room: M-Th 9 a.m.-5 p.m.	\$40/hr	\$40/hr	
Cooper Conference Room: M-Th after 5 p.m.	\$50/hr	\$50/hr	
Cooper Conference Room: Fri-Sun and Holidays	\$50/hr	\$50/hr	
Hoyt Blanchard Room: M-Th 9 a.m.-5 p.m.	\$75/hr	\$75/hr	
Hoyt Blanchard Room: M-Th after 5 p.m.	\$85/hr	\$85/hr	
Hoyt Blanchard Room: Fri-Sun and Holidays	\$85/hr	\$85/hr	

DRIVING RANGE			
Braemar Driving Range	2022	2023	COMMENTS
Large Bucket: Daily Fee	\$10	\$11	
Large Bucket: Player's Club Member	\$9	\$10	
Small Bucket	\$6	\$6.50	

ACADEMY 9 COURSE			
Greens Fees	2022	2023	COMMENTS
Academy 9 Daily Fee "Prepayment Online"	\$17.10	\$17.10	
Academy 9 Daily Fee	\$19	\$19	
Academy 9 Player's Club Member "Prepayment Online"	\$14.40	\$14.40	
Academy 9 Player's Club Member	\$16	\$16	
Junior "Prepayment Online"	\$10.80	\$10.80	
Junior	\$12	\$12	
Youth on Course - MGA	\$5	\$5	

Proposed 2023 Parks and Recreation Fees

Note: fees listed do not include tax

League Prepayment Academy 9	\$225.75	\$216.72	one less week of league
Golf Cars	2022	2023	COMMENTS
Academy 9 Daily Fee	\$16	\$16	
Academy 9 Player's Club Member	\$15	\$15	
Push Carts	\$5	\$5	

Player's Club	2022	2023	COMMENTS
Resident Player's Club	\$30	\$35	Have not increased since course renovation
Non-Resident Player's Club	\$50	\$60	Have not increased since course renovation
League	\$30	\$35	Have not increased since course renovation

GOLF DOME			
Golf Dome	2022	2023	COMMENTS
Time Golf 1/2 Hour	\$16	\$17	Increase to take effect in November of 2023 (dome season runs Nov-April)
Time Golf 1/2 Hour Player's Club Member	\$15	\$16	Increase to take effect in November of 2023 (dome season runs Nov-April)
Time Golf 1/4 Hour: Additional Time Only	\$8	\$9	Increase to take effect in November of 2023 (dome season runs Nov-April)
Hourly Field Rental	\$175	\$175	
Monday-Thursday Time Golf 1/2 hour : Senior Player's Club	\$8	\$10	Increase to take effect in November of 2023 (dome season runs Nov-April)
Golf Dome Guest Professional Instruction Fee: 1/2 Hour	\$25	\$25	
Golf Dome Guest Professional Instruction Fee: 1 hour	\$40	\$40	
Golf Dome Legacy Professional Instruction Fee	\$11/Lesson	\$12/Lesson	Increase to take effect in November of 2023 (dome season runs Nov-April)
Time Golf 1 hour	\$30	\$32	Increase to take effect in November of 2023 (dome season runs Nov-April)
Time Golf 2 hours	\$56	\$60	Increase to take effect in November of 2023 (dome season runs Nov-April)
Time Golf 1 hour: Player's Club Member	\$28	\$30	Increase to take effect in November of 2023 (dome season runs Nov-April)
Time Golf 2 hour: Player's Club Member	\$52	\$56	Increase to take effect in November of 2023 (dome season runs Nov-April)
Promotional Time Golf 1 hour	\$25	\$25	
High School Time Golf 1 hour per bay	\$25	\$25	
Online Reservation and Prepayment	\$65	\$65	
Online Reservation and Prepayment Player's Club	\$55	\$55	
Player's Club	2022	2023	COMMENTS
Resident Golf Dome Player's Club	\$30	\$35	Increase to take effect in November of 2023 (dome season runs Nov-April)
Non-Resident Golf Dome Player's Club	\$50	\$60	Increase to take effect in November of 2023 (dome season runs Nov-April)

EDINBOROUGH PARK			
Pool & Track Daily Admission	2022	2023	COMMENTS
Residents and Non-Residents	\$8.37	\$8.37	Increased in 2022 - appropriately priced compared to like-service providers
Pool & Track 10 Admission Pass	2022	2023	COMMENTS
Residents and Non-Residents	\$75	\$75	
Pool & Track Annual Membership	2022	2023	COMMENTS
Resident Individual	\$330	\$340	3% increase on memberships
Each Additional Member	\$135	\$140	
Non-Resident Individual	\$370	\$385	
Each Additional Member	\$155	\$160	
Locker Rental	\$0.25	\$0.25	

Birthday Party Packages/2 Hours	2022	2023	COMMENTS
The Peak Package	\$150	\$180	20% increase; adjust to market rate of like service providers
The Adventure Package	\$225	\$270	20% increase; adjust to market rate of like service providers

Proposed 2023 Parks and Recreation Fees

Note: fees listed do not include tax

Fam Jam Package	\$325	\$390	20% increase; adjust to market rate of like service providers
The BIG Birthday Adventure Package	\$425	\$510	20% increase; adjust to market rate of like service providers

Building Rentals/Non-Exclusive Rentals/Hr	2022	2023	COMMENTS
Theater	\$300	\$300	
Theater with Audio-Visual Equipment	\$350	\$350	
Pool (swim team only)	\$66	TBD	Will meet with Edina Swim Club to establish fee before year-end
Pool Other	\$72	\$78	

EDINBOROUGH PARK "PLAYPARK"			
Playpark Daily Admission	2022	2023	COMMENTS
Resident and Non-Resident	\$8.37	\$8.37	Increased in 2022 - appropriately priced compared to like service providers
Children Under 1 year-old	Free	Free	
Adults	Free w/paid child	Free w/paid child	
Group Reservation Rate	\$7	\$7	
Admission After 5 p.m. (summer only)	\$6	\$6	

Playpark - 10 Admission Pass	2022	2023	COMMENTS
Resident and Non-Resident	\$75	\$75	

Playpark Annual Membership	2022	2023	COMMENTS
Resident Individual	\$110	\$121	10% increase on playpark memberships
Each Additional Member	\$87.25	\$96	10% increase on playpark memberships
Non-Resident Individual	\$137.50	\$151	10% increase on playpark memberships
Each Additional Member	\$115	\$127	10% increase on playpark memberships

Total Facility Daily Admission	2022	2023	COMMENTS
Resident	\$15	\$15	
Non-Resident	\$15	\$15	

CENTENNIAL LAKES PARK			
Rental Concession Items	2022	2023	COMMENTS
Paddle Boats: 4 person boat/ per 45 minutes	\$20	\$20	
Winter Sled/Trainer per hour	\$8	\$8	
Ice Skates	\$8	\$8	
Fishing Pole	\$3	\$3	

Building Rentals	2022	2023	COMMENTS
1/2 room, Monday-Thursday, 6 hours	\$425	NA	Replaced by two rates below
1/2 room, Monday-Thursday, Ending by 8 p.m.	NA	\$425	
1/2 room, Monday-Thursday, Ending by 10 p.m.	NA	\$500	Additional charge for late-night staffing
1/2 room, Sunday, 6 hours	\$600	\$600	
Full room Friday or Saturday, 10 hours	\$1,625	NA	Replaced by two rates below
Full room Friday or Saturday, Ending by 8 p.m.	NA	\$1,625	
Full room Friday or Saturday, Ending by 10 p.m.	NA	\$1,875	Additional charge for late-night staffing
Full room Monday-Thursday, 6 hours	\$600	NA	Replaced by two rates below
Full room, Monday-Thursday, Ending by 8 p.m.	NA	\$600	
Full room, Monday-Thursday, Ending by 10 p.m.	NA	\$700	Additional charge for late-night staffing

Proposed 2023 Parks and Recreation Fees

Note: fees listed do not include tax

Full room, Sunday, 6 hours	\$900	\$900	
Amphitheater Rental (3 hour rental)	\$425	\$425	
Commercial Photo Shoot	\$50/hr	\$50/hr	

Lawn Games	2022	2023	COMMENTS
9 Hole Golf	\$6	NA	Scottish Links has replaced this
18 Hole Golf	\$10	\$10	
Lawn Bowling Court	\$20/hr	\$20/hr	
Croquet Court	\$35/hr	NA	No longer offered
Scottish Links	\$5	\$6	Replacing the 9-Hole option

BRAEMAR ARENA			
Hourly Rates (except where noted)	2022	2023	COMMENTS
Prime Hourly Rate (9/16 - 3/15)	\$255	\$262	
Prime Season Late Night: After 9 p.m.	\$190	\$195	
Off-Season	\$190	\$200	
Off-Season Late Night: After 9 p.m.	\$150	\$175	
Off-Season Tournament	\$200	\$210	
In-Season Early Morning	\$170	\$170	
Early Morning Training Ice (6-8 a.m.)	\$115	\$130	
Backyard Rink Early Morning/Undesirable Ice	\$75	\$75	
Backyard Rink - Prime - EHA - Day/Late Night	\$155	\$155	
Open skating (youth and adult)	\$5/person	\$5/person	
Skate Rental	\$5/rental	\$5/rental	
Birthday Party Open Skating	\$99	\$125	more in line with otherEdina facility birthday party packages
Room Rental	\$30	\$30	
Futsal	\$35	\$35	
Holiday Ice: Arena	\$300	\$325	
Holiday Ice: Backyard	\$220	\$225	
Tournament Headquarter Room	\$75/day	\$100/day	Associations are exempt from this fee
Event Vendor Fee	\$50/event/vendor	\$50/event/vendor	
Fire Ice	10% discount	10% discount	
Equipment Storage	\$25/day; \$50/wknd	\$25/day; \$50/wknd	

Memberships (set the first week of September)	2022	2023	COMMENTS
Open Skating Membership			
Resident Family:			
First 2 Members	\$120	NA	Restructured rates post COVID
Each Additional Member	\$10	NA	Restructured rates post COVID
Maximum (7 persons)	\$165	NA	Restructured rates post COVID
Resident Individual	\$110	\$125	Good for one year from date of purchase; matches dome annual membership
Non-Resident Family:			
First 2 Members	\$130	NA	Restructured rates post COVID
Each Additional Member	\$10	NA	Restructured rates post COVID
Maximum (7 persons)	\$180	NA	Restructured rates post COVID
Non-Resident Individual	\$120	NA	Restructured rates post COVID
Open Skating Punch Card	\$50	NA	Restructured rates post COVID
Skate Rental Punch Card (buy 10 get 1)	\$50	NA	Restructured rates post COVID

Proposed 2023 Parks and Recreation Fees

Note: fees listed do not include tax

Arena -Activity Admissions	2022	2023	COMMENTS
Non-School Day Youth Open Hockey	\$5/ Per Child	\$5/ Per Child	
Morning Development Ice	NA	\$25	\$25/30 minutes/quarter sheet of ice
Developmental Ice for Hockey and Figure Skating Resident	\$10	NA	Restructured rates post COVID
Developmental Ice for hockey and Figure Skating: Non-Resident	\$12	NA	Restructured rates post COVID
Developmental Skating Resident Punch Card (buy 10 get 1)	\$100	NA	Restructured rates post COVID
Developmental Skating Non-Resident Punch Card (buy 10 get 1)	\$120	NA	Restructured rates post COVID
Pro's Ice	\$15	NA	Restructured rates post COVID
Pro's Ice Unlimited Pass	\$300/month	NA	Restructured rates post COVID
Pro's Ice Punch Card (buy 20 sessions get 1 free)	\$300	NA	Restructured rates post COVID

Arena - Adult Activities	2022	2023	COMMENTS
Adult Open Hockey	\$5/person	\$5/person	
Adult Open Hockey Punchcard (buy 10 get 1)	\$50	NA	Restructured rates post COVID

BRAEMAR FIELD (DOME)			
Hourly Rates (except where noted)	2022	2023	COMMENTS
Full Field Prime (Mon-Fri 4pm-10pm/Sat, Sun 7am-10pm)	\$410	\$425	
1/2 Field Prime (Mon-Fri 4pm-10pm/Sat, Sun 7am-10pm)	\$205	\$225	
1/4 Field Prime (Mon-Fri 4pm-10pm/Sat, Sun 7am-10pm)	\$110	\$125	
Early Morning/Late Nite	\$335	\$350	
1/2 Field Early Morning/Late Night	\$200	\$200	
1/4 Field Early Morning/Late Night	\$125	\$125	
70' Batting Cage: 1/2 hour	\$30	\$30	
50' Batting Cage: 1/2 hour	\$25	\$25	
Full Field Non-Prime	\$175	\$175	
1/2 Field Non-Prime	\$80	\$80	
1/4 Field Non-Prime	\$40	\$40	
Open Turf Time(drop-in)	\$5/person	\$5/person	
Fire Dome	10% discount	10% discount	
Individual Season Pass	\$125	\$125	
Field Punch Card	\$50	NA	Restructured rates post COVID
Birthday Party (1 hour)	\$99	\$100	

Edina Athletic Association Rentals Hourly Rates <i>(Baseball, Football, Lacrosse and Soccer)</i>	2022	2023	COMMENTS
Primetime: 5-10 p.m. (Jan- April)/Monday-Friday	\$380	\$390	
1/2 Field Primetime: 5-10 p.m. (Jan.-April)/Monday-Friday	\$190	\$195	
Primetime: 8 a.m.-10 p.m.(Jan.- April)/Saturdays	\$380	\$390	
1/2 Field Primetime: 8 a.m.-10 p.m.(Jan.- April)/Saturdays	\$190	\$195	
Primetime: 8 a.m. - 5 p.m.(Jan.- April)/ Sundays	\$380	\$390	
1/2 Field Primetime: 8 a.m. - 5 p.m. (Jan.- April)/Sundays	\$190	\$195	
Off Hours: All Other - (Jan.-April)/All	\$305	\$315	
1/2 Field Off Hours: All Other(Jan.- April)/All	\$153	\$157	
Shoulder Season: All hours October - December	\$355	\$365	
1/2 Field Shoulder Season: All hours October - December	\$178	\$183	

Braemar Field - Activities and Events	2022	2023	COMMENTS
Tot Time	\$5/person/per session	\$5/person/per session	
Open Soccer	\$5/person/per session	\$5/person/per session	
Family Time at Braemar Field	\$5/person/per session	\$5/person/per session	

Proposed 2023 Parks and Recreation Fees

Note: fees listed do not include tax

Open Dome Time at Braemar Field	\$5/person/per session	\$5/person/per session	
PARK DEPARTMENT RENTALS			
General Park Areas	2022	2023	COMMENTS
Resident Use/ per hour	\$60	\$60	
Resident Use/ per day	\$180	\$180	
Non-Resident Use/per hour	\$70	\$70	
Non-Resident Use/per day	\$210	\$210	
Commercial Use (i.e. TV)/ Per Hour	Varies	\$60	
Commercial use with light/Per Hour	Varies	\$80	
Mobile Food Unit	\$30	\$30	
Mobile Food Unit Annual Pass	\$550	\$550	
Maintenance/Custodial - Per Hour	\$55	\$60	
Athletic Fields	2022	2023	COMMENTS
Resident - Per Field/per day	\$180	\$180	
Non-Resident - Per field/per day	\$210	\$210	
Per Field/Per Hour: Resident	\$60	\$60	
Per Field/Per Hour: Non-Resident	\$70	\$70	
Lights add-on	\$15/hr	\$15/hr	
Turf full field (Pamela & Braemar)/ Per Hour: Resident	\$70	\$70	
Turf full field (Pamela & Braemar)/Per Hour: Non-Resident	\$100	\$100	
Turf half field (Pamela & Braemar)/Per Hour: Resident	\$45	\$45	
Turf half field (Pamela & Braemar)/Per Hour:Non-Resident	\$65	\$65	
Maintenance/Custodial: Per Hour	\$55	\$55	
Athletic Association Clinics and Camps /Per Day/Per Field	\$50	\$55	
Athletic Association Tournaments	\$180	\$185	
Sand Volleyball Court/Per Hour	\$15	\$15	
Van Valkenburg/Courtney Fields	2022	2023	COMMENTS
Per Field/Per Day: Includes building-Residents	\$200	\$200	
Per Field/Per Day: Includes building-Non-Residents	\$235	\$235	
Rosland Park Pathway (Scheduled Walk/Run Events)	2022	2023	COMMENTS
Per Day	\$275	\$275	
Arneson Acres	2022	2023	COMMENTS
Terrace Room & Gazebo			
Half-Day (8a.m.-2p.m.; 4-10p.m.)	\$280	\$280	
Full-Day (8a.m.-10p.m.)	\$380	\$380	
Picnic Shelter Rentals	2022	2023	COMMENTS
Chowen Park: Half-Day	\$35	\$37	
Chowen Park: Full-Day	\$51	\$53	
Fred Richards Park:Half-Day	\$35	\$37	
Fred Richards Park: Full-Day	\$51	\$53	
Sherwood Park: Half-Day	\$35	\$37	
Sherwood Park: Full-Day	\$51	\$53	
Wooddale Park: Half-Day	\$35	\$37	

Proposed 2023 Parks and Recreation Fees

Note: fees listed do not include tax

Wooddale Park: Full-Day	\$51	\$53	
Utley Park: Half-Day	\$35	\$37	
Utley Park: Full-Day	\$51	\$53	
Rosland Park: Half-Day	\$80	\$84	
Rosland Park: Full-Day	\$155	\$163	

Park Shelter Building Rentals	2022	2023	COMMENTS
Arden Park: Half-Day	\$80	\$84	
Arden Park: Full-Day	\$115	\$121	
Cornelia School Park: Half-Day	\$80	\$84	
Cornelia School Park: Full-Day	\$115	\$121	
Countryside Park: Half-Day	\$80	\$84	
Countryside Park: Full-Day	\$115	\$121	
Pamela Park: Half-Day	\$80	\$84	
Pamela Park: Full-Day	\$115	\$121	
Todd Park: Half-Day	\$80	\$84	
Todd Park: Full-Day	\$115	\$121	
Walnut Ridge Park: Half-Day	\$80	\$84	
Walnut Ridge Park: Full-Day	\$115	\$121	
Weber Park: Half-Day	\$80	\$84	
Weber Park: Full-Day	\$115	\$121	
Creek Valley Park	NA	\$19	
Highlands Park	NA	\$19	
Lewis Park	NA	\$19	
Normandale Park	NA	\$19	
Strachauer Park	NA	\$19	

Edina Athletic Associations	2022	2023	COMMENTS
Field User Fee/ Per Participant	\$13	\$13	
Gymnasium User Fee/Per Participant	\$13	\$13	
Outdoor Hockey Rink User Fee/ Per Participant	\$13	\$13	
Inclusion Fee/ Per Participant	\$1	\$1	

EDINA SENIOR CENTER			
Room Rental	2022	2023	COMMENTS
Aquarium Room: Resident	\$25/hr	\$25/hr	
Aquarium Room: Non-Resident	\$30/hr	\$30/hr	
Classroom 1, 2, 3 or 4: Resident (2 hr. minimum)	\$45/hr	\$45/hr	
Classroom 1, 2, 3 or 4: Non-Resident (2 hr. minimum)	\$50/hr	\$50/hr	
Grandview Room: Resident (2 hr. minimum)	\$65/hr	\$65/hr	
Grandview Room: Non-Resident (2 hr. minimum)	\$70/hr	\$70/hr	
Fireside Room: Half-Day (8a.m.-2p.m.; 4-10p.m.)	\$480	\$480	
Fireside Room: Full-Day (8a.m.-10p.m.)	\$720	\$720	
Wall Art Display Rental	15% of sale	15% of sale	



CITY OF EDINA

4801 West 50th Street

Edina, MN 55424

www.edinamn.gov

Date: November 1, 2022

Agenda Item #: VII.C.

To: Parks and Recreation Commission

Item Type:

Report and Recommendation

From: Perry Vetter, Parks and Recreation Director

Item Activity:

Subject: 2022 Work Plan Updates

Discussion

ACTION REQUESTED:

Discuss and provide updates to the 2022 Commission Work Plan.

INTRODUCTION:

The 2022 Commission Work Plan is attached for discussion and updates.

ATTACHMENTS:

2022 PARC Work Plan



Commission: Parks & Recreation Commission

2022 Annual Work Plan Proposal

Initiative # 1	Initiative Type <input type="checkbox"/> Project <input checked="" type="checkbox"/> Ongoing / Annual <input type="checkbox"/> Event Council Charge <input type="checkbox"/> 1 (Study & Report) <input type="checkbox"/> 2 (Review & Comment) <input type="checkbox"/> 3 (Review & Recommend) <input checked="" type="checkbox"/> 4 (Review & Decide)		
Present information about Parks and Recreation facilities, services, and systems with up to six community groups.	Deliverable Presentation	Leads Good (lead), Haas, Weaver	Target Completion Date
Progress Q1: Content has been determined around 1) Parks, 2) Recreation Programming, 3) Enterprise Facilities, 4) Funding. Would utilize Town Talk opportunities and searching for other community-based opportunities. Newly appointed members will meet with leads to onboard for this item.			
City Council Feedback: Council suggested to review any PTO groups for possible presentations.			
Progress Q3: Finalizing the When, How and and Where portions. Expect to have draft ready for review at end of August.			
Progress Q4:			

Initiative # 2	Initiative Type <input checked="" type="checkbox"/> Project <input type="checkbox"/> Ongoing / Annual <input type="checkbox"/> Event Council Charge <input type="checkbox"/> 1 (Study & Report) <input type="checkbox"/> 2 (Review & Comment) <input checked="" type="checkbox"/> 3 (Review & Recommend) <input type="checkbox"/> 4 (Review & Decide)		
Report and provide recommendations on alternative funding sources for park related improvements including parks, facilities, and enterprise upgrades. The report will include a philanthropic wish list	Deliverable: Report and recommendation to Council	Leads Ites (lead), Haas, Pfuhl, Descotch,	Target Completion Date
Progress Q1: Staff has shared draft information with initiative leads. Newly appointed members will meet with leads to onboard for this item.			
Progress Q2:			
Progress Q3:			
Progress Q4:			

Initiative # 3	Initiative Type <input checked="" type="checkbox"/> Project <input type="checkbox"/> Ongoing / Annual <input type="checkbox"/> Event Council Charge <input checked="" type="checkbox"/> 1 (Study & Report) <input type="checkbox"/> 2 (Review & Comment) <input type="checkbox"/> 3 (Review & Recommend) <input type="checkbox"/> 4 (Review & Decide)		
Research opportunities to expand volunteer assistance for park initiatives.	Deliverable Report to staff.	Leads Strother (Lead), Weaver, Welsch	Target Completion Date
Progress Q1: All leads have been newly assigned to this item and will meet with staff on prior members ideas for this initiative.			
Progress Q2:			
Progress Q3:			
Progress Q4:			

Initiative # 4	Initiative Type <input checked="" type="checkbox"/> Project <input type="checkbox"/> Ongoing / Annual <input type="checkbox"/> Event Council Charge <input type="checkbox"/> 1 (Study & Report) <input type="checkbox"/> 2 (Review & Comment) <input type="checkbox"/> 3 (Review & Recommend) <input type="checkbox"/> 4 (Review & Decide)		
Provide support with educational opportunities for the Local Option Sales Tax in the community as needed.	Deliverable Attend events to share information.	Leads Doscotch, Ites, Good, Spanhake	Target Completion Date
Progress Q1: Leads are willing to support staff driven opportunities on this initiative.			
City Council Feedback: Ensure commissioners receive educational materials.			
Progress Q3: Additional information available at Edinaatplay.org			
Progress Q4: Staff has completed a series of educational presentations and some recorded at Better Together Edina and information available at Edinaatplay.org			

Initiative # 5	Initiative Type <input checked="" type="checkbox"/> Project <input type="checkbox"/> Ongoing / Annual <input type="checkbox"/> Event Council Charge <input type="checkbox"/> 1 (Study & Report) <input checked="" type="checkbox"/> 2 (Review & Comment) <input type="checkbox"/> 3 (Review & Recommend) <input type="checkbox"/> 4 (Review & Decide)		
Review and Comment on amendments to the Park ordinances being recommended by staff for update.	Deliverable Comment on ordinance updates	Leads Strother (lead), Doscotch, Pfuhl,	Target Completion Date March 2022
Progress Q1: Staff will deliver recommendations for commissioner review.			
City Council Feedback: Suggested having Race and Equity review prior to bringing forward changes.			
Progress Q3: In addition to feedback provided, recommended reviewing current ordinance for any volleyball and fireworks related updates.			
Progress Q4: Commissioner leads have provided feedback to staff. Initiative complete at this stage.			

Initiative # 6	Initiative Type <input checked="" type="checkbox"/> Project <input type="checkbox"/> Ongoing / Annual <input type="checkbox"/> Event Council Charge <input type="checkbox"/> 1 (Study & Report) <input checked="" type="checkbox"/> 2 (Review & Comment) <input type="checkbox"/> 3 (Review & Recommend) <input type="checkbox"/> 4 (Review & Decide)		
Review and comment on the proposed Grandview plan.	Deliverable Comment on plan.	Leads Haas (lead), Pfuhl, Weaver, Spanhake	Target Completion Date
Progress Q1: Review conducted as part of Jan. 11, 2022, regular meeting agenda. Engagement on the pedestrian bridge public art component is currently open for feedback. August 7, 2022.			
Progress Q2: HRA took action on the sale of the project during its June 2, 2022 agenda.			
Progress Q3: Working group provided feedback to Economic Development Manager – City Council review slated for October 6, 2022.			
Progress Q4:			



CITY OF EDINA

4801 West 50th Street

Edina, MN 55424

www.edinamn.gov

Date: November 1, 2022

Agenda Item #: IX.A.

To: Parks and Recreation Commission

Item Type:

Other

From: Perry Vetter, Parks and Recreation Director

Item Activity:

Subject: Informational Items

Information

ACTION REQUESTED:

None, informational only.

INTRODUCTION:

Attached are informational items for November covering Parks and Recreation activities.

ATTACHMENTS:

Informational Items - November 2022



Date: November 1, 2022

To: Park and Recreation Commission

From: Perry Vetter, Parks & Recreation Director

Subject: Informational Items

Information / Background:

Braemar Golf Dome

- The Braemar Golf Dome will open for the winter season on Tuesday, Nov. 1. Hours of operation will be 7 a.m.-9 p.m. daily. Keep your golf clubs out of storage and play some of the most iconic courses throughout the winter months on our Toptracer Range Technology!
- Our Fall Dome Floating League also begins on Nov. 1 and will run through Dec. 23. Players must register before Nov. 1 to participate in the league. Grab a partner and enjoy six weeks of play plus a championship week. Each week play a different 18-hole course at some of the top golf courses around the world on the Toptracer Range Technology.

Braemar Golf Course

- The Championship 18, the Academy 9 and the Driving Range will close for the season on Monday, Oct. 31. We would like to thank our residents and patrons for a great year of golf. See you in 2023.
- Winter hours at the Championship 18 golf shop will be 10 a.m.-4 p.m. Monday through Friday.

Braemar Arena

- Braemar Sports Dome was installed for the season on Friday, Oct. 21 and the first dome rental is slated for Saturday, Nov. 5.
- Flooding of the Backyard Rink will start on Friday, Oct. 28 and the first Backyard skaters will be on Saturday, Nov. 5.

Edinborough Park Indoor Pickleball Space

- Edinborough Park has a great pickleball court/space in the gym available for one-hour rental slots starting in November. Rentals are available before the park opens for the day. Reservations are required at EdinboroughPark.com. Bring your own equipment, up to 4 players per reservation and fee is \$20 residents/\$25 non-residents.

Lewis Park Playground Replacement

- The new playground equipment has been installed and several compliments have been received.



CITY OF EDINA

4801 West 50th Street

Edina, MN 55424

www.edinamn.gov

Date: November 1, 2022

Agenda Item #: IX.B.

To: Parks and Recreation Commission

Item Type:

Other

From: Perry Vetter, Parks and Recreation Director

Item Activity:

Subject: Upcoming Meetings and Events

Information

ACTION REQUESTED:

None, informational only.

INTRODUCTION:

Upcoming 2022 Meetings and Events.

ATTACHMENTS:

Upcoming 2022 Meetings and Events

STAFF REPORT



Date: Nov. 1, 2022

To: Park and Recreation Commission

From: Perry Vetter, Parks & Recreation Director

Subject: Upcoming 2022 Meetings and Events

Date	2022 Meetings	Time	Location*
Tues. Oct. 11	Regular Meeting	7:00 pm	Braemar Golf Course
**Tues. Nov. 1	Regular Meeting <i>Note: Presentation on Grand Rounds Trail System by Transportation Planner Andrew Scipioni (Energy & Environment Comm. Members attending)</i>	7:00 pm	Braemar Golf Course
Tues. Dec. 13	Regular Meeting	7:00 pm	Braemar Golf Course

* Location update – Regular Commission meetings will be held in the Hoyt and Blanchard Room, lower level of Braemar Golf Course, 6364 John Harris Drive, Edina.

** Date Adjustments – Due to the 2022 election season the August and November meeting dates have been adjusted as listed.