

Agenda
Parks and Recreation Commission
City Of Edina, Minnesota
Braemar Golf Course - 6364 John Harris Dr.

Tuesday, June 14, 2022
7:00 PM

- I. Call To Order
- II. Roll Call
- III. Approval Of Meeting Agenda
- IV. Approval Of Meeting Minutes
 - A. Minutes: Parks & Recreation Commission May 10, 2022
- V. Special Recognitions And Presentations
 - A. Introduction of Parks and Recreation Summer Intern
- VI. Community Comment

During "Community Comment," the Board/Commission will invite residents to share relevant issues or concerns. Individuals must limit their comments to three minutes. The Chair may limit the number of speakers on the same issue in the interest of time and topic. Generally speaking, items that are elsewhere on tonight's agenda may not be addressed during Community Comment. Individuals should not expect the Chair or Board/Commission Members to respond to their comments tonight. Instead, the Board/Commission might refer the matter to staff for consideration at a future meeting.

- VII. Reports/Recommendations
 - A. 2023 Work Plan Development Discussion
 - B. 2022 Work Plan Discussion
- VIII. Chair And Member Comments
- IX. Staff Comments
 - A. Informational Items
 - B. Upcoming Meetings and Events
- X. Adjournment

The City of Edina wants all residents to be comfortable being part of the public process. If you need assistance in the way of hearing amplification, an interpreter, large-print documents or something else, please call 952-927-8861

72 hours in advance of the meeting.



CITY OF EDINA

4801 West 50th Street

Edina, MN 55424

www.edinamn.gov

Date: June 14, 2022

Agenda Item #: IV.A.

To: Parks and Recreation Commission

Item Type:

Minutes

From: Perry Vetter, Parks & Recreation Director

Item Activity:

Subject: Minutes: Parks & Recreation Commission May 10, 2022

Action

ACTION REQUESTED:

Approve minutes from the May 10, 2022 Parks & Recreation Commission meeting.

INTRODUCTION:

ATTACHMENTS:

Minutes: Parks & Recreation Commission May 10, 2022



Minutes
City of Edina, Minnesota
Edina Parks & Recreation Commission
Braemar Golf Course
May 10, 2022
7 p.m.

I. Call to Order

Chair Ites called the meeting to order at 7 p.m.

II. Roll Call

Answering roll call were Commissioners Good, Haas, Ites, Pfuhl, Spanhake, Weaver, Welsh and Student Commissioner Presthus

Absent: Commissioners Doscotch, Strother and Student Commissioner Jha

Staff present: Staff Liaison Perry Vetter, Assistant Director Parks & Natural Resources Tom Swenson, Assistant Director Recreation & Facilities Tracy Petersen, Recreation Supervisor Laura Fulton and Administrative Coordinator Janet Canton

III. Approval of Meeting Agenda

Chair Ites made an amendment to Item III to include the Annual Work Plan.

Motion made by Haas to approve the amended meeting agenda. Motion seconded by Spanhake. Motion carried.

IV. Approval of Meeting Minutes

Motion made by Pfuhl to approve the April 12, 2022 minutes. Motion seconded by Haas. Motion carried.

V. Community Comment

None

VI. Reports/Recommendations

A. Arts Programming

Recreation Supervisor, Laura Fulton, provided an update and overview of programs and events.

The commission asked Recreation Supervisor Fulton questions regarding sign-up and programming support.

B. Proposed Braemar Park Master Plan Amendments and Special Project Request for Braemar Ice Arena Expansion

Staff Liaison Vetter reviewed the proposed Braemar Park Master Plan amendments and special project request for the Braemar Ice Arena expansion.

Staff answered the commissioner's questions.

Commissioners commented on the review pertained to ensuring a long-term strategy for ongoing capital expenses is developed and supported for the existing arena amenities as well if expansion to a fourth indoor ice sheet was authorized. They also supported the proposed forward-looking studies, to ensure that the facilities are well positioned in the future to keep up with market competition and continue to support user needs and the revenue generation of the improved enterprise operations.

Motion made by Good to recommend to the City Council the amendments to the Braemar Park Master Plan. Motion seconded by Haas. Motion carried.

VII. Chair and Member Comments

A. 2022 Work Plan

Staff Liaison Vetter asked for any updates on the 2022 Work Plan.

Initiative #1 – Present Information about Parks and Recreation Facilities, Services, and Systems with up to Six Community Groups. Commissioner Good provided an update and indicated he found draft documents that he will send out to the group as well as a schedule for upcoming Town Talks. He noted May 23 is the Fred Richards Master Plan, July 18 is the Braemar Master Plan and September 1 is the Local Option Sales Tax. He thought it would be important that they also try to get on the agenda for mid-October.

Initiative #2 – Report and provide recommendations on alternative funding sources for park related improvements including parks, facilities, and enterprise upgrades. Chair Ites indicated he received some information from the director that will be sent to the group talking about alternative funding.

Initiative #3 – Research Opportunities to Expand Volunteer Assistance for Park Initiatives.
None.

Initiative #4 – Provide Support with Educational Opportunities for the Local Option Sales Tax in the Community as Needed. None.

Initiative #5 – Review and Comment on Amendments to the Park Ordinances Being Recommended by Staff for Update. Staff Liaison Vetter indicated the City Council asked staff to forward changes to the commission on amendments that were made.

Initiative #6 – Review and Comment on the Proposed Grandview Plan. Staff Liaison Vetter updated the commission on the Grandview Plan.

VIII. Staff Comments

A. Informational Items

- None.

B. Upcoming 2022 Meetings and Events

Staff Liaison Vetter informed the commission of upcoming 2022 meetings and events.

IX. Adjournment

Motion made by Good to adjourn the May 10, 2022 meeting at 8:21 p.m. Motion seconded by Pfuhl. Meeting adjourned.



CITY OF EDINA

4801 West 50th Street

Edina, MN 55424

www.edinamn.gov

Date: June 14, 2022

Agenda Item #: V.A.

To: Parks and Recreation Commission

Item Type:

Other

From: Tracy Petersen, Assistant Director-Recreation & Facilities

Item Activity:

Subject: Introduction of Parks and Recreation Summer Intern

Information

ACTION REQUESTED:

None, informational only.

INTRODUCTION:

Rachel Salzer, will be present to introduce herself as the Parks and Recreation Intern.



CITY OF EDINA

4801 West 50th Street

Edina, MN 55424

www.edinamn.gov

Date: June 14, 2022

Agenda Item #: VII.A.

To: Parks and Recreation Commission

Item Type:

Report and Recommendation

From: Perry Vetter, Parks and Recreation Director

Item Activity:

Subject: 2023 Work Plan Development Discussion

Discussion

ACTION REQUESTED:

None, discussion only on the process to generate the 2023 Parks and Recreation Commission Work Plan.

INTRODUCTION:

Community Engagement Manager MJ Lamon will present to the commission a review of the process to begin work on the 2023 work plan. While the current, 2022 work plan, is still in progress the 2023 draft plan must be finalized by the August meeting and recommended by the commission via motion. Chair Ites will present the proposed work plan for City Council review in early October.

An update for the 2023 planning is to review the City's Climate Action Plan (CAP) and make an effort to include one initiative that can assist in the further implementation of that plan. A memo from the City's Sustainability Manager and staff liaison to the Energy and Environment Commission Grace Hancock is attached for review. For more background on the CAP please visit <https://www.edinamn.gov/1779/Climate-Action> or search "Climate Action" at www.EdinaMN.Gov

ATTACHMENTS:

Annual Work Plan Review Presentation

2023 Commission Climate Action Menu

2023 Work Plan Template

Comprehensive Guide Plan - Parks, Open Space, and Natural Resources Chapter



Commission Member Review 2022

MJ Lamon

Community Engagement Manager

Updated 2022.05.23

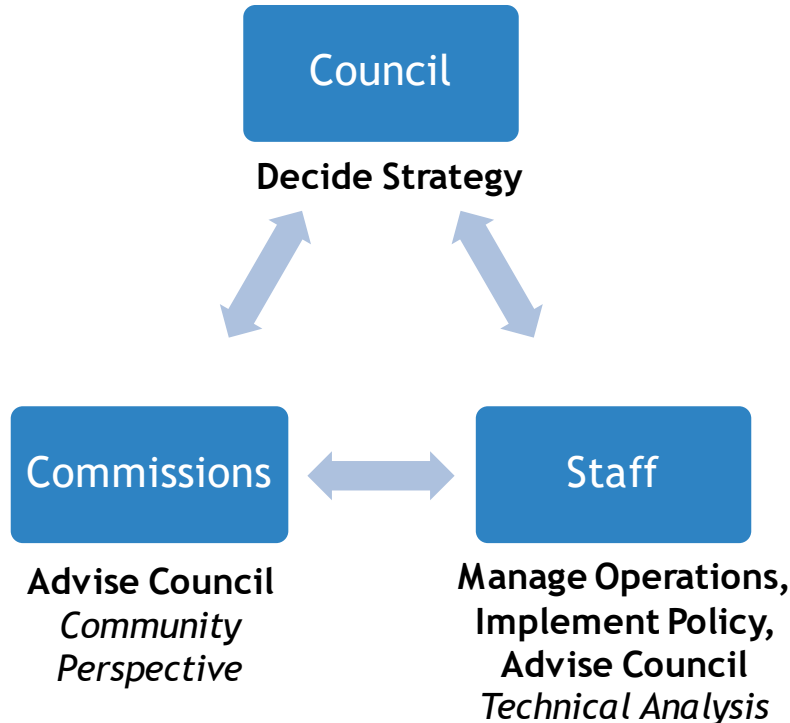
Agenda

► Work Plan Development

- Citywide Work Plans
- Calendar
- Roles
- Sub-committee & working groups
- Template
- Field Descriptions



Supporting Council



Council

- Make policy-level decisions
- Hire & supervise City Manager
- Approve
 - Budget and related work plan
 - Ordinances and policy decisions
 - Development proposals
 - Variances and rezoning requests
- Appoint advisory boards and commissions

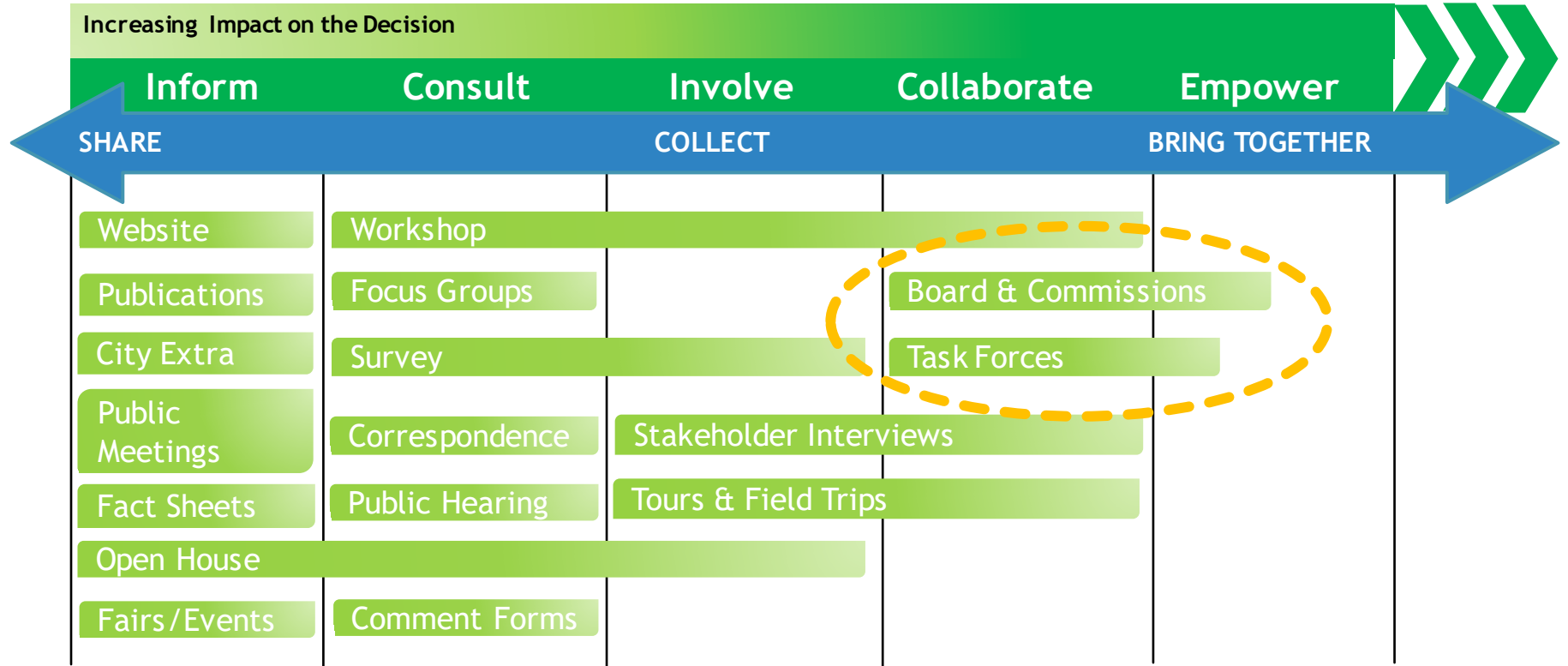
Staff

- Provide best efforts and technical advice to Council
- Manage operations and staff
- Propose budget and policies
- Carry out Council decisions
- Deliver services
- Equitably enforce codes and policies

Advisory Boards, Commission & Task Forces

- Provide community perspective on values and needs
- Propose work plan items
- Advise the council through work plan charges
- Hold hearings as directed by Council
- Assist as directed in work plan with engagement efforts

Technique Examples on the Spectrum

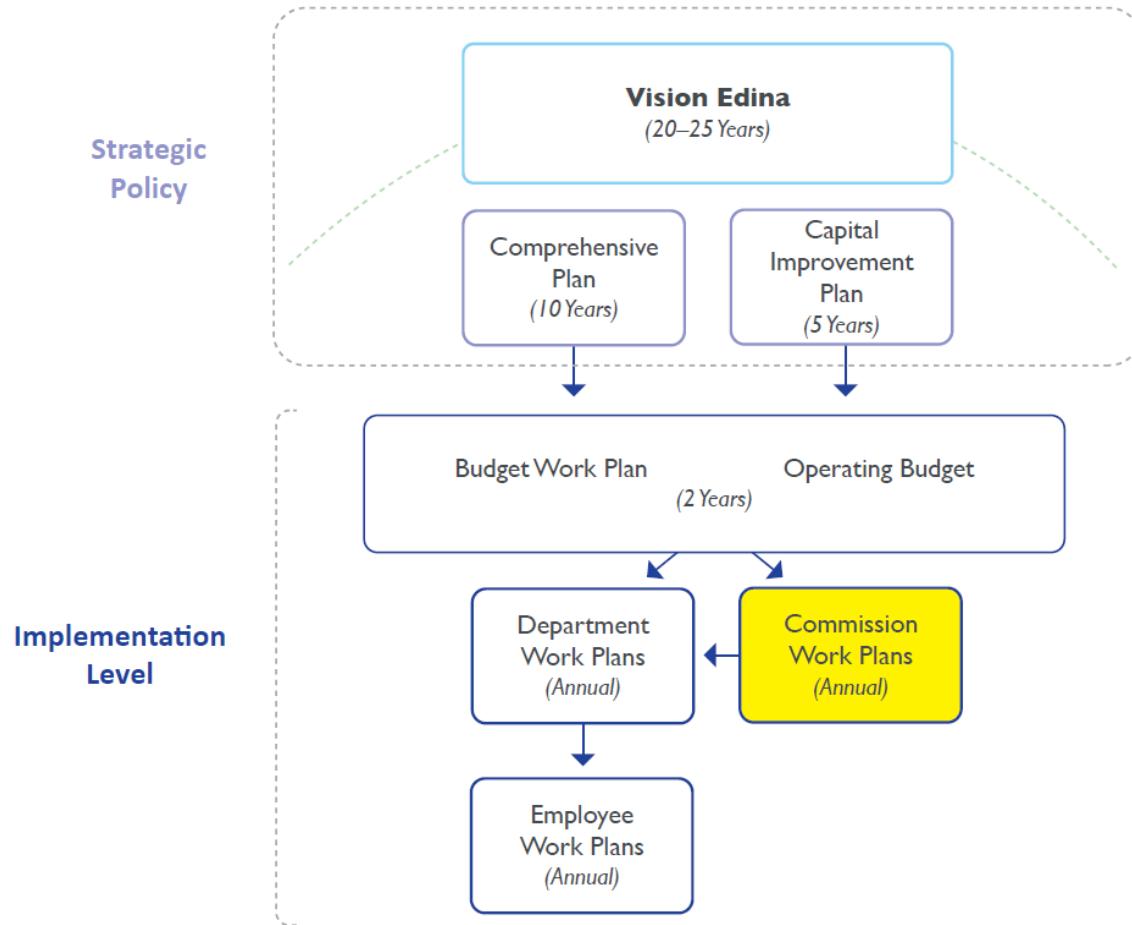


	Commission	Subcommittee	Working Group	Task Force
Tenure	Ongoing	Temporary	Temporary	Temporary
Members	Residents	Commission members only	Commission + Public members	As defined
Scope	Work Plan	Work Plan Item	Work Plan Item	Task Force Charge
OML	Required	Not required	Not required	Not required
Staff Support	Yes	No	Not typically	Yes
Reports To	Council	Commission	Commission	Council or City Manager

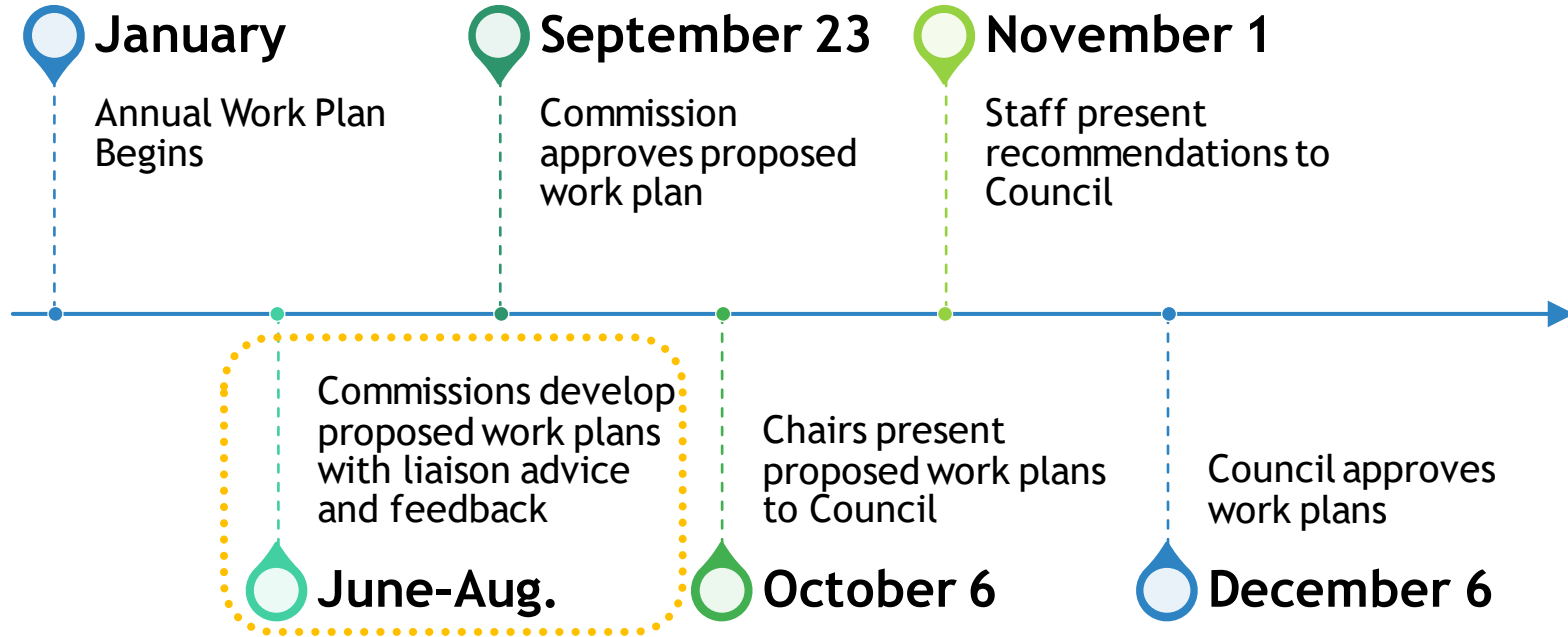
Key Roles

CHAIR	STAFF LIAISON
<ul style="list-style-type: none">• Work with liaison to prepare agenda• Lead meetings and facilitate discussion• Facilitate development of the annual work plan and provide progress updates• Encourage member participation• Manage areas of conflict	<ul style="list-style-type: none">• Prepare agenda and meeting materials• Provide official notice of meetings• Record & prepare minutes.• Maintain BC official records• Provide technical expertise and access to City staff and resources• Relay information to council

Work Plans



Commission Work Plan Calendar



Roles

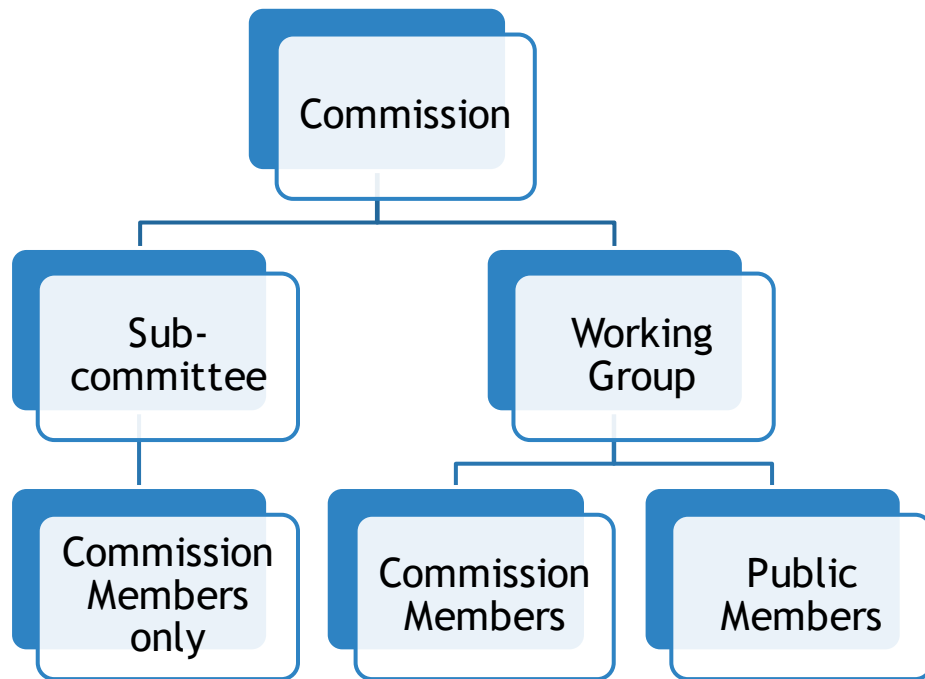
Commission Chair

- Lead work plan development
- Make sure work plan is not overloaded
- Ensure there is a “lead(s)” to each initiative
- Present proposed work plan to City Council

Staff Liaison

- Provide technical expertise, recommendations and advice to the commission
- Provide clear recommendations to City Management and/or Council to consider
- Ensure work plan template fields are completed

Committees & Working Groups



Considerations:

- Quorum
- Student members



Commission: Choose an item.

2023 Annual Work Plan Proposal



Initiative #	Initiative Type <input type="checkbox"/> Project <input type="checkbox"/> Ongoing / Annual <input type="checkbox"/> Event Council Charge <input type="checkbox"/> 1 (Study & Report) <input type="checkbox"/> 2 (Review & Comment) <input type="checkbox"/> 3 (Review & Recommend) <input type="checkbox"/> 4 (Review & Decide)		
Initiative Title	Deliverable	Leads Sub-Committee or Working Group	Target Completion Date
Budget Required: (Completed by staff) Are there funds available for this project? If there are not funds available, explain the impact of Council approving this initiative.			
Staff Support Required (Completed by staff): How many hours of support by the staff liaison? Communications / marketing support?			
Liaison Comments:			
City Manager Comments:			
Progress Q1:			
Progress Q2:			
Progress Q3:			
Progress Q4:			

Parking Lot: (These items have been considered by the BC, but not proposed as part of this year's work plan. If the BC decides they would like to work on them in the current year, it would need to be approved by Council.)

Title

Be clear and provide detail

Deliverable

What exactly will be the product / result of your initiative

Budget

Staff determines if funds are available, commission collectively decides to available funds

Liaison Comments

Liaisons will provide you technical advice and feedback

Leads

Signify who is working on the item, working group?

Target Completion

Be realistic, impacts to supporting departments

Partner Projects

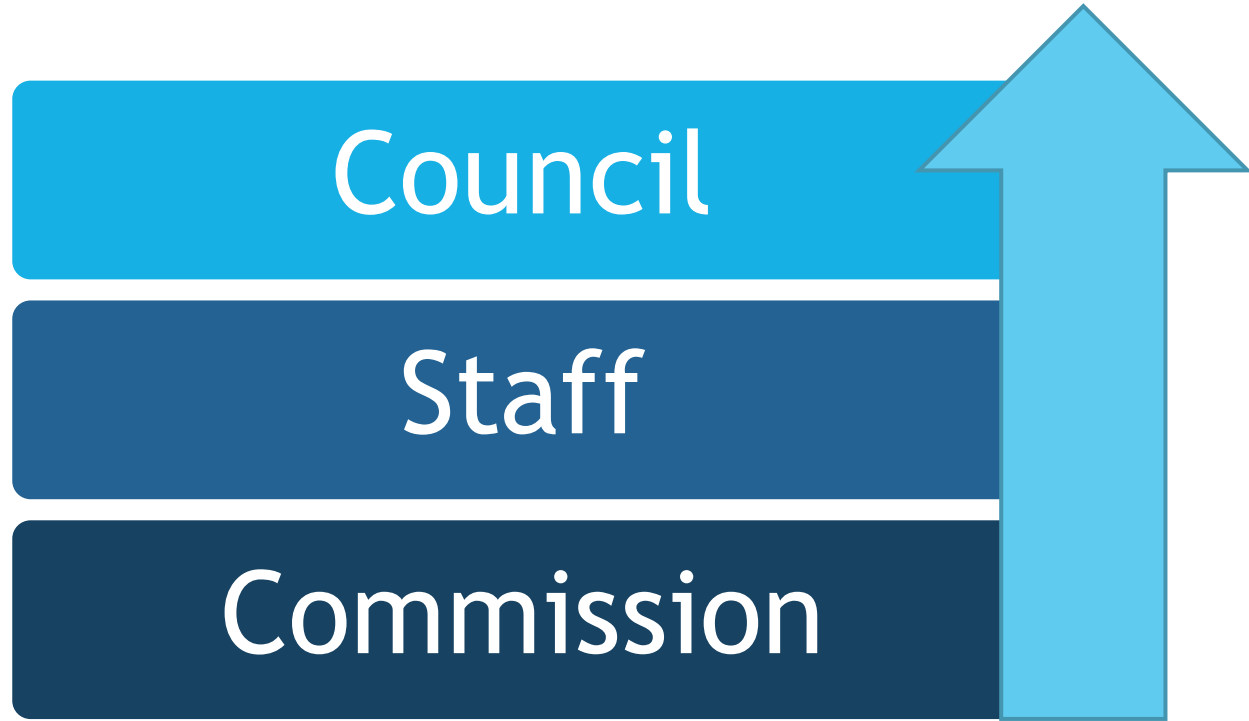
Cross commission initiatives, liaisons communicate partner requests

Progress Reports

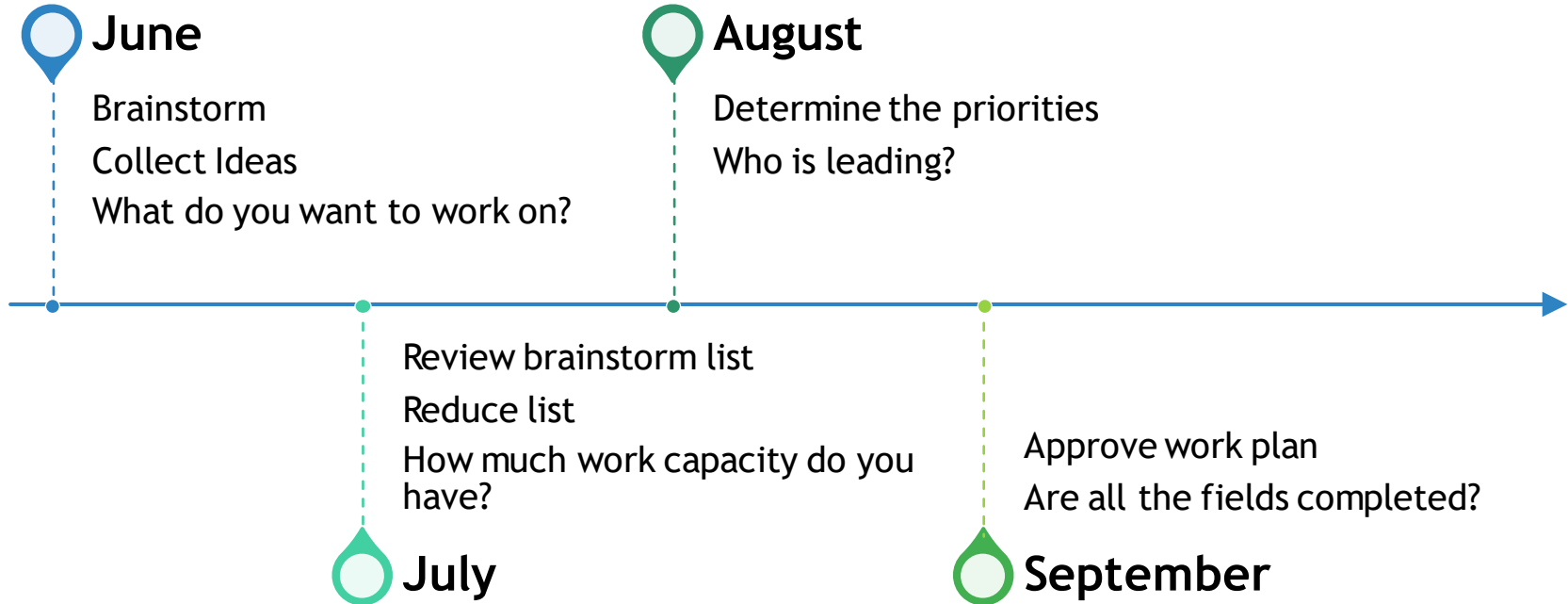
Complete quarterly & always before joint meeting

***Don't leave white fields blank**

Commission Up



Steps to Develop your work plan!



Climate Action Plan (2023)

- Review Climate Action Menu
- Consider including one Climate Action to 2023 work plan
- For questions, contact EEC Chair

Questions?

Department Name

Phone 952-927-8861 • Fax 952-826-0390 • EdinaMN.gov



Date: 06/01/2022
To: Edina Boards and Commissions
From: Grace Hancock, Sustainability Manager
Subject: Edina Commission Climate Action Menu: 2023 Work Plan options
Attachment: 2023 Commission Climate Action Menu

Background: The City's first [Climate Action Plan](#) (CAP) was approved at the end of 2021 with 36 strategies supported by 200 actions. The CAP identifies the City's GHG emission reduction target of 45% below 2019 levels by 2030 and achieve net zero emissions by 2050. The CAP's goal is to help those who live and work in Edina imagine and achieve a future where the Earth and all who live on it thrive.

For more information, the Climate Action Plan was the subject of a 2021 Town Talk, viewable here: https://www.bettertogetheredina.org/town-talks/forum_topics/sustainability-climate-action-plan

In 2022, City staff kicked off the implementation of the CAP, undertaking ~60 actions, along with a few actions led by Commissions. With feedback from the Energy and Environment Commission, the Sustainability Division has informed City Council that it will ask that each Commission consider adding a Climate Action to its 2023 work plan.

Attached is a refined list of Climate Actions that are suitable for Commission leadership. Some have been identified as especially suitable for certain Commissions, but all are available for all Commissions to consider for their 2023 work plan. These actions were chosen based on the nature of Commission work – resident volunteers who advise Council based on their Commission Charge. The intent for any Climate Action undertaken by a Commission is to study the issue and identify what's possible for Council to consider as next steps. It is not expected that Commissions accomplish the Action within one year, rather it is hoped that Commissions can lend their resident perspective and expertise to make meaningful contributions to the progress of any action they choose to undertake.

Action Requested: Commissions should discuss the Climate Action Menu as part of their 2023 work plan development process. Commissions should consider including one Climate Action in their 2023 work plan, and be prepared to mention how their work aligns with the Climate Action Plan when presenting to City Council. For clarifying questions related to any Climate Actions, Commission Chairs should contact the EEC Chair and/or Vice Chair.

EEC Chair: Hilda Martinez, hildakimx99@gmail.com
EEC Vice Chair: Michelle Horan, mhoran00@gmail.com

Edina Commission Climate Action Menu: 2023 Work Plan options

Strategy	Action	Potential Commission Work Plan
Buildings & Energy 1-5	Partner with local organizations and businesses to educate the public and promote the adoption of energy efficiency habits like purchasing high-efficiency equipment, turning the lights off in unused spaces and at night, having efficient indoor temperature control, and promote home energy audits among their staff and students.	
BE 1-7	Create a welcome packet for new businesses and residents, which will provide information on all the energy efficiency improvement resources and opportunities.	
BE 1-13	Establish a performance ratings/labeling program for all homes listed for sale or rent so that owners, tenants and prospective buyers can make informed decisions about energy costs and carbon emissions. Rating program to require Energy Audit/Energy Efficiency Program participation.	EEC
BE 4-2	Partner with institutions and businesses within Edina to secure commitments to reduce operational greenhouse gas emissions in line with the goals of this Climate Action Plan, achieving carbon neutrality by 2050.	
BE 4-5	Create an educational program to inform residential and commercial properties about renewable energy opportunities including technologies that eliminate on-site fossil fuel use.	
Economic Development CE 1-4	Promote Edina as an environmentally friendly destination by highlighting the businesses that are taking steps to reduce resource consumption (Green Business Recognition program).	EEC
Greenspace GS 1-4	Update City's Landscape ordinance to include a minimum tree coverage per lawn area or per impervious surface coverage for all new construction or expansion projects. Explore options for decrease of turf grass/lawn coverage and increase of wildflower/prairie grass coverage requirements.	
GS 1-7	Prioritize planting and preservation of native species of plants and trees and species of plants and trees adaptive to climate change on public and private property through education, incentives and other promotional programs. <i>Ensure that landscaping requirements articulated in the zoning code include the preservation of the maximum possible number of existing trees, the use of native plantings and the preservation of natural areas whenever possible.</i>	
GS 2-2	Remove and ease lawn/grass requirements in ordinances.	
GS 2-6	Establish a policy to require the use of native plants in landscaping at City-owned properties. Continue natural vegetation conversion for passive park areas. Add 110 Acres of native plant and pollinator restoration area on City Property by 2040.	EEC
GS 2-7	Establish a policy and identify, create, and promote incentives to assist homeowners and households with low incomes by covering some of the cost of converting traditional lawns by planting pollinator friendly food gardens, permaculture, wildflowers, clover or native grasses in an effort to slow the collapse of the state's bee population.	
GS 2-8	Develop educational and informational resources providing information on benefits of and strategies for reduced and repurposed lawn space including: native plantings, "carbon gardening" strategies for ornamental gardens, and produce gardens, tree profile rebuilding, elimination of synthetic fertilizer and pesticide use, high mow deck settings, use of biochar amendments, polyculture lawn mixture and other beneficial greenspace practices included in this CAP.	
Environmental Health HS 2-2	Add climate preparedness elements to public health programs already aimed at vulnerable populations and low-income households and dedicate increased funding to accommodate demand for public health services among at-risk populations.	CHC
HS 4-3	Support, leverage create relationships with, and enhance community networks and connections for those who require special attention, such as people who are elderly, homebound, disabled, isolated, or those likely to be in need of financial assistance during or after extreme weather events (heat, cold and heavy precipitation).	CHC
Local Food LF 1-2	Support existing school and community gardens and provide opportunities to expand community growing spaces with a focus on locating garden infrastructure to serve youth, immigrant, and people with lower incomes or who are experiencing food insecurity. Community growing and garden spaces may include use of park space, unused city owned space, or public right of way/boulevard areas. Program should prioritize conversion of impervious spaces to garden space and preservation/increase of overall green space benefit. Provide on-going promotion, communication, and education of the sites and opportunities including appropriate translated and accessible content.	
LF 1-4	Incentivize and reward soil best management practice for urban lawns, gardens, landscaping, parks, open spaces, prairies, environmentally sensitive areas, and agricultural land uses.	EEC
LF 4-2	Establish an Green Business Refrigeration upgrade cost sharing incentive program providing a 25% matching grant for qualified buildings and applicants to switch to green refrigeration practices.	EEC
Transportation & Land Use TL 3-2	Eliminate parking minimums to reduce surface parking and institute new parking pricing models to maintain 85% utilization (performance-based parking, off-street parking tax, dynamic pricing, etc.)	PC/ETC
TL 3-7	Allow and encourage the construction of accessory dwelling units ("ADU") to increase rental opportunities in both established neighborhoods and new development. This will add additional housing options for the City's workforce, seniors, families with changing needs, and others for whom ADUs present an affordable housing option.	PC
TL 4-5	Develop incentive and educational programs to transition lawn care companies and homeowners from using fuel-burning lawn equipment (e.g., lawn mowers, blowers) to electric.	EEC
TL 1-5	Establish a branded communications campaign to promote increased alternative transportation use, with a particular focus on short distance trips (ie <2 miles) including school and other daily commutes.	ETC
Waste WM 1-2	Support collaborative consumption community projects, such as neighborhood compost projects, tool libraries, and repair cafes through mini-grant programs.	
WM 2-3	Conduct an organics waste collection pilot project with a sample of City businesses to test the interest, methodology, and amount of commercial food waste that would need to be accommodated by a commercial organics collection program. Explore possible incentives for food retailers, restaurants, and institutions to participate in food waste reuse and recycling programs.	
WM 3-2	Explore a requirement that all waste be recycled or salvaged at large construction sites.	
WM 4-5	Promote and partner to support a Fix It Fair at the Library and create a resource list for reuse.	
W 1-3	Facilitate reduction of water use by top customers annually through an opt-in water reduction program targeting water reduction goals of 20% or more per site. Offer free technical resources to large institutions and businesses to identify specific opportunities for employees or customers to conserve water and incorporate water efficiency into internal operations. Program can be coordinated with the City's Waste Audit and Diversion Assistance program. Goal: 30 business water use audits completed annually with customers engaged in measuring and reducing water consumption.	
W 1-6	Conduct a Water Conservation "challenge" campaign ask participants to reduce water consumption through water use behavior change strategies, irrigation system utilization, and replacement of fixtures like shower heads with WaterSense certified fixtures.	
WM 1-3	Explore options for waste hauling improvements supporting CAP goal achievement, including modifications to City's existing licensure process and requirements as well as organized waste hauling strategies.	



Commission: Parks & Recreation Commission 2023 Annual Work Plan Proposal

Initiative #	Initiative Type <input type="checkbox"/> Project <input type="checkbox"/> Ongoing / Annual <input type="checkbox"/> Event Council Charge <input type="checkbox"/> 1 (Study & Report) <input type="checkbox"/> 2 (Review & Comment) <input type="checkbox"/> 3 (Review & Recommend) <input type="checkbox"/> 4 (Review & Decide)		
Initiative Title	Deliverable	Leads	Target Completion Date
Budget Required: (Completed by staff) Are there funds available for this project? If there are not funds available, explain the impact of Council approving this initiative.			
Staff Support Required (Completed by staff): How many hours of support by the staff liaison? Communications / marketing support?			
Liaison Comments:			
City Manager Comments:			
Progress Q1:			
Progress Q2:			
Progress Q3:			
Progress Q4:			
Parking Lot: (These items have been considered by the BC, but not proposed as part of this year's work plan. If the BC decides they would like to work on them in the current year, it would need to be approved by Council.)			

EDINA Comprehensive Plan



6. Parks, Open Space, and Natural Resources

Chapter Highlights

The following six points guided the development programs, goals and policies presented in this chapter of the Comprehensive Plan Update.

1. Edina has committed to a minimum of 15 percent of its land area to be used as parks and green space. (As of the most recent census, we are right at this threshold.) Future standards will need consider “hardscape” environments as represented in the Greater Southdale District Plan.
2. All Community and Special Use parks will have an updated Master Plan to guide use, growth and future development. Every Park MP will include an approach to best maintain, improve and promote its natural resources.
3. Connecting our neighborhoods via a Grand Rounds concept and in coordination with the Pedestrian and Bicycle Master Plan.
4. Be intentional on the use of benchmarking to assess progress against strategic objectives.
5. Explore alternative funding models to support future growth and accomplishment of our Mission.
6. Establish a goal to have park facilities within a maximum distance of one mile from each Edina resident

The Major Challenge

Like many communities, Edina is witnessing demographic changes. Changes that occurred between 2008, when the last comprehensive plan was written, and now are only a glimpse of what is expected to occur over the next 10 years. In order to ensure that the City’s park system will continue to meet the needs of residents, the City will need to continually provide sensitive and appropriate responses to changes in social, demographic, technological, economic, political and environmental trends. The magnitude of these changes will demand flexibility in planning practices to appropriately respond to rapidly changing needs.

Edina Parks and Recreation Department Vision and Mission

The Parks and Recreation Department’s vision and mission are stated in the 2015 Parks and Recreation Strategic Plan. This policy plan document can be accessed by clicking on the hyperlink below.

<https://www.edinamn.gov/315/Park-System-Strategic-Plan>

Introduction

The City of Edina operates one of the most well-regarded parks and recreation systems in the metropolitan Twin Cities. Edina is a fully developed first ring suburb of Minneapolis with a park system that continues to be improved with targeted additions and innovative operations. The park system, comprising the City's physical park lands, recreation areas, and trails, along with numerous programs and collaborations with local youth sports associations, greatly contribute to a high quality of life.

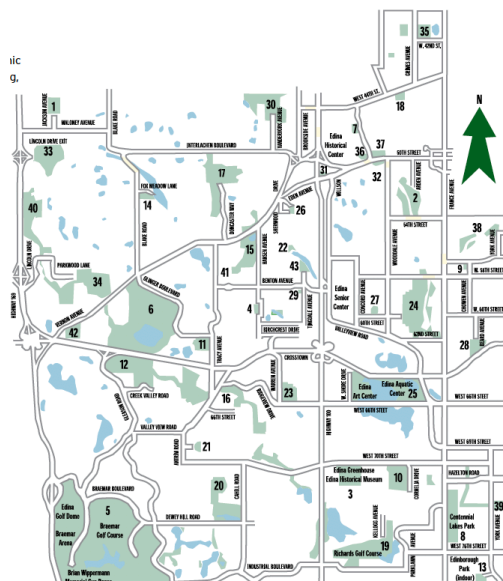
The Vision of the Edina Park and Recreation Department (EPRD) is "To strive for excellence in our parks, recreation and trails system to provide Edina a high quality of life by nurturing the health and well-being of our people, our community, our environment and our economy." In fulfillment of that vision, the EPRD's Mission Statement is "To create parks, facilities, and programs to foster a healthy and inclusive community. We accomplish this through creative leadership, collaborations, environmentally sustainable practices and the responsible use of available resources."

Inventory and Current Conditions

The National Park and Recreation Association (NRPA) periodically publishes "Park and Open Space Standards and Guidelines" for municipal park and recreation agencies to assist in comprehensive planning. The NRPA suggests that the "national standards" be used only as a benchmark guideline, because each community has its own unique profile in regards to demographics, total acreage, terrain, climate and a host of other affecting factors. Nonetheless, Edina currently exceeds the national standard guideline for acres per 1,000 residents.



The NRPA suggests a national standards guideline of 25 acres per 1,000 residents. This standard would include all local, county, and state-owned property within the community. There are currently no county, state or federal park lands in Edina. All 1,565 acres of park land and open space are owned and maintained by the City of Edina. The City's 1,565 total park and open space acreage computes to 30.2 acres per 1,000 residents (based on the 2016 Census population of 51,804). Currently, the EPRD oversees 43 parks and open spaces totaling more than 1,565 acres and operates nine facilities, which include:



- Edina Aquatic Center
- Edina Art Center
- Braemar Ice Arena and Sports Dome
- Braemar Golf Courses
- Braemar Golf Dome
- Centennial Lakes Park
- Edinborough Park
- Arneson Acres Park
- Edina Senior Center

Figure 6.1: City of Edina Parks and Facilities Map



Park amenities at these facilities include baseball and soft ball diamonds; football, soccer, and lacrosse fields; basketball, tennis, pickleball and bocce ball courts; outdoor skating rinks; playground equipment for young children, including an adaptive playground; a community garden; and both winter warming houses and summer picnic shelters. The Department also maintains over eight miles of scenic pathways for bicycling, walking, jogging, cross-country skiing, snowshoeing, and mountain biking.

Regional Parks and Trails and the 2040 Regional Parks Policy Plan

As stated in the Goals and Policies and section of this chapter, it is a goal to make connections to parks and trails to ensure that Edina residents have convenient access to recreational facilities and services. These include regional park and trail facilities both outside and within the City.

The 2040 Regional Parks Policy Plan adopted by the Metropolitan Council in February 2015 is the metropolitan system plan for regional recreation open space, and there are regional public parks and facilities in the Twin Cities area that serve Edina residents. For example, Three Rivers Park District owns and maintains regional parks and trails throughout suburban Hennepin County, such as the Nine Mile Creek Regional Trail in addition to seven park reserves, 12 regional parks, five special recreation features, and 15 other regional trails. The Minneapolis Park Board's Grand Rounds trail system (including the Chain of Lakes Trail) and the Three Rivers Park District's Cedar Lake LRT Regional Trail are regional facilities that are outside the City of Edina but can be accessed by Edina residents. These regional parks offer a variety of recreation opportunities. For example, Three Rivers Park District parks offer snowmobiling, horseback riding, boating, archery, camping, canoeing, downhill skiing, nature centers and historic farm facilities.

The 2040 Regional Parks Policy Plan does not identify regional park and recreation facilities directly in the City of Edina, with the following two exceptions:

Nine Mile Creek Regional Trail – Nine Mile Creek Regional Trail is a 15-mile multi-use trail that spans the Cities of Hopkins, Minnetonka, Edina, Richfield, and Bloomington. It also connects to the Lake Minnetonka LRT, Minnesota River Bluffs LRT, Cedar Lake LRT, North Cedar Lake, and Nokomis-Minnesota River Regional Trails as well as the planned Minnesota River State Trail, Dakota County Big Rivers Regional Trail, Minnesota Valley National Wildlife Refuge Bloomington Visitor Center, and Fort Snelling State Park. Much of the trail was completed and opened for use in 2017. The Edina segment of the trail was completed in spring 2018.

From the west, it currently enters the City of Edina from Hopkins over the Bren Road/Londonderry Road Bridge Interchange at TH-169. From the east, it enters the City from Richfield at the cul-de-sac of Xerxes Avenue just south behind Fire Station 2. In 2020 the Park District anticipates it will construct a safer and more direct connection under TH-169 that will pass

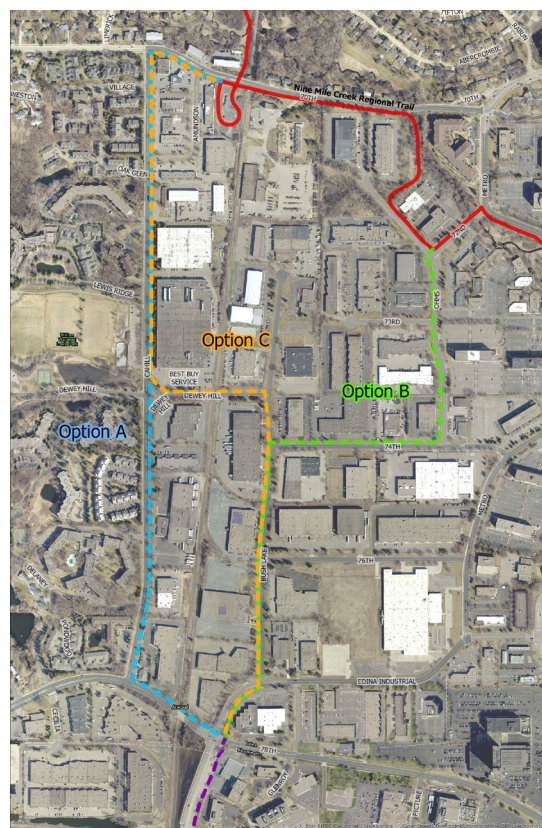


Figure 6.2: Alternative Alignments for the CP Rail Regional Trail
Source: Three Rivers Park District



through the Nine Mile Creek watershed.

Canadian Pacific Rail Regional Trail (CP Rail Regional Trail) – This proposed regional trail was first identified in the 2030 Regional Parks Policy Plan (adopted in June 2005 as the Southwest Hennepin Regional Trail West). The regional trail generally follows the existing north/south, Canadian Pacific Railroad alignment in the City of Edina. Once constructed, it will link the Hyland-Bush-Anderson Park Reserve in Bloomington to the Nine Mile Creek Regional Trail in Edina. From Edina, the future trail will connect regional trails in Hopkins, St. Louis Park, Golden Valley, and Crystal.

In 2019, Three Rivers Park District completed a regional trail study and master plan for the south Edina portion of the CP Rail Regional Trail. Figure 6-2, on the previous page, shows the preferred alignment through this area along Bush Lake Road, Dewey Hill Road, and Cahill Road.

City Park Inventory

The following are individual park locations and acreage totals.

Mini-Parks - 12 Parks – 21.12 Acres

A Mini park is characterized by a size of approximately 2 acres or less and is designed to serve primarily the needs of pre-school age children, although it may provide facilities designed to serve the recreation needs of other age groups. Edina's Mini-Parks typically do not have scheduled athletic facilities. Mini parks are typically used to address limited or isolated recreational needs. Service Area - ¼ Square Mile.

Table 6.1: Mini Parks			
Park	Address	Size	Quadrant
Birchcrest	6016 Hansen Road	1.61 Acres	NW
Browndale	4510 Browndale Avenue	.82 Acre	NE
Chowen	5700 Chowen Avenue	.93 Acre	NE
Grandview Square	5213 Grandview Square	.60 Acre	NW
Kojetin	4201 W. 44th Street	2.69 Acres	NE
Lake Edina	4400 Parklawn Avenue	3.10 Acres	SE
McGuire	W. 69th & McGuire Road	2.00 Acres	SW
Melody Lake	5501 Melody Lake Drive	4.18 Acres	NW
Sherwood	Sherwood Rd. & Edenmoor	1.53 Acres	NW
St. Johns	W. 60th & St.Johns Avenue	.94 Acre	NE
Tingdale	W. 59th & Tingdale Avenue	.67 Acre	NW
York Park	5448 York Avenue	2.05 Acres	NE

Neighborhood Parks - 12 Parks - 112.85 Acres

Neighborhood parks are designed to serve primarily the needs of children six to fourteen years of age. Tennis courts, softball diamonds, basketball and ice skating facilities are commonly provided in neighborhood parks. Some of Edina's neighborhood parks have one or more scheduled athletic facilities, such as outdoor hockey rinks and/or fields for soccer, football, baseball, and softball. Neighborhood parks typically range in size from approximately two acres to twenty acres. Service Area = 1 Square Mile.


Table 6.2: Neighborhood Parks

Park	Address	Size	Quadrant
Alden	6750 Belmore Lane	5.12 Acres	NW
Arden	5230 Minnehaha Boulevard	17.75 Acres	NE
Cornelia School	7124 Cornelia Drive	10.75 Acres	SE
Countryside	6240 Tracy Avenue	9.01 Acres	NW
Fox Meadow	Blake Rd. & Fox Meadow Lane	3.84 Acres	NW
Heights	5520 W. 66th Street	4.00 Acres	SW
Normandale	6501 Warren Avenue	10.06 Acres	SW
Strachauer	6200 Beard Avenue	4.50 Acres	NE
Utey	50th & Wooddale Avenue	5.73 Acres	NE
Wooddale	W. 50th & Wooddale Avenue	4.70 Acres	NE
Yorktown	W. 73rd & York Avenue	3.42 Acres	SE
Todd Park	4429 Vandervork Avenue	33.97 Acres	NW

Community Playfields – 8 Parks - 253.68 Acres

Community playfields typically range in size from approximately 20 to 60 acres. These parks are designed to provide facilities for diverse recreational activities for young people and adults, although a section is also typically set aside for smaller neighborhood children. All of Edina's Community Playfields have one or more scheduled athletic facilities, such as outdoor hockey rinks and fields for soccer, football, baseball and softball. Service area - 9-16 square miles.

Table 6.3: Community Playfields

Park	Address	Size	Quadrant
Creek Valley	W. 64th & Gleason Road	10.00 Acres	SW
Garden	5520 Hansen Road	18.74 Acres	NW
Highlands	5200 Doncaster Way	44.05 Acres	NW
Lewis	Dewey Hill & Cahill Road	21.04 Acres	SW
Pamela	5900 Park Place	62.00 Acres	NE
Van Valkenburg	4935 Lincoln Drive	41.76 Acres	NW
Walnut Ridge	5801 Londonderry Road	44.24 Acres	NW
Weber	4115 Grimes Avenue	11.85 Acres	NE



Community Parks - 4 Parks - 549.05 Acres

The community park is usually a large park of more than 100 acres, or a smaller park containing special community facilities.

Table 6.4: Community Parks

<u>Park</u>	<u>Address</u>	<u>Size</u>	<u>Quadrant</u>
Braemar	SW Corner of Edina	500.00 Acres	SW
Centennial Lakes	7495 France Avenue	25.00 Acres	SE
Kenneth Rosland	4300 West 66th Street	22.05 Acres	SE
Edinburgh	7700 York Avenue South	2.00 Acres	SE

Special Purpose Parks - 7 Parks - 287.11 Acres

The special purpose park provides a single or specific form of recreation. Service Area is citywide.

Table 6.5: Special Purpose Parks

<u>Park</u>	<u>Address</u>	<u>Size</u>	<u>Quadrant</u>
Arneson Acres	4711 West 70th Street	15.00 Acres	SE
Bredesen	Vernon Ave. & Olinger Boulevard	206.00 Acres	NW
Richards	7640 Parklawn Avenue	39.65 Acres	SE
Southdale Gateway	SE Corner of Edina	9.97 Acres	SE
Tupa	4918 Eden Avenue	1.00 Acre	NE
Williams	West 50th & Browndale	.34 Acre	NE
Grandview Square/ Senior Citizen Center	5280 Grandview Square	5.15 Acres	NW
Weber Woods	40th Street & France	10.0 Acres	NE

Summary of Parks and Natural Resource Parks - 7 Parks – 1,575.94 Acres

Table 6.6: Park Summary

<u>Park Type</u>	<u>Acres</u>
Natural Resource Areas (19 areas)	352.13
Mini-Parks (12)	21.12
Neighborhood Parks (12)	112.85
Community Playfields (8)	253.68
Community Parks (4)	549.05
Special Purpose Parks (7)	287.11
Total Parklands & Natural Resource Areas	1,575.94



The following are parkland acreage totals per park classification.

Table 6.7: Total Acreage by Number of Park Facilities				
Component	Character	SVC Area	# of Parks	Total Acreage
Natural Resource Areas	Vary in size	Varies	19	352.13
Mini-Parks	Less than 2 acres	¼ sq.mi.	12	21.12
Neighborhood Parks	Serve children (ages 6 to 14)	1 sq.mi.	11	78.88
Community Playfields	Serve recreational needs of young people and adults	9-16 sq.mi.	9	287.65
Community Parks	Large parks in excess 100 acres. Serve pre-school-adult active and passive recreational pursuits	4-16 sq.mi.	4	549.05
Special Purpose Parks	Provide a special form of recreation	City Wide	7	287.11
Total Parkland & Natural Resource Areas			62	1,575.94

Natural Resource Open Space Areas

The NRPA defines Natural Resource Areas as lands set aside for preservation of significant natural resources, remnant landscapes, open space, and visual aesthetics/buffering. These lands consist of:

- Individual sites exhibiting natural resources.
- Land that is unsuitable for development but offers natural resource potential. (Examples include parcels with steep slopes, and natural vegetation, drainage-ways and ravines, surface water management areas (man-made pond areas, and utility easements).
- Protected lands, such as wetlands/lowlands and shorelines along waterways, lakes, and ponds.

All natural resource open space areas were inventoried and categorized as follows. The City's quadrants were determined by the two dividing highways in Edina: TH 62 and TH 100. Table 6.8, below, presents results of the inventory.



Table 6.8: Natural Resource Open Space Areas	
Northwest Quadrant	Acreage
Nine Mile Creek Right of Way	148.15
Lincoln Drive Floodplain	17.16
Division Street Storm Water Drainage	18.14
Moore Property (Melody Lake)	4.96
Normandale Rd. (NW Benton & Hwy 100)	2.14
Garden Park Addition	6.70
Glenbrae & Ayrshire	4.30
Krahl Hill	7.75
Pine Grove Road (S and E of dead-end)	4.39
Northeast Quadrant	Acreage
Littel & Lynn Avenue	.46
W. 41st Street and Lynn Avenue	3.10
Minnehaha Creek Right of Way	22.88
Townes Road	1.00
Southwest Quadrant	Acreage
Nine Mile Creek Right of Way	9.75
Cahill School Backlot	11.05
NE of High School & S of Crosstown	37.29
Dewey Hill Ponds	48.00
Limerick Dr. (dead end W of RR)	3.90
Southeast Quadrant	Acreage
Bristol & Mavelle	1.01
Total Natural Resource Acres	352.13

Other Maintained Grass Areas

Table 6.9: Maintained Grass Areas	
Park Type	Acres
Plazas, Triangles, and Circles	5.00
Storm Water and Drainage Areas	60.00
Total Maintained Grass Areas	65.00



Edina: A Community of Learning. Edina has a prized education system of high-quality public schools. The Parks, Open Space, and Natural Resources chapter of the Comprehensive Plan recognizes the importance of extending the benefits of education to the entire community through parks-related policies and programming and building on both obvious and not so obvious linkages between the City's parks, public schools, Public Works projects, heritage resources, arts and culture, community health, etc.

For example, the parks can be used as classrooms by the public schools to expose students (and their parents) to the importance of pollinator gardens and rain gardens. Moreover, informational kiosks can be installed in the City's parks that explain how recreational trails and paths are constructed and how stormwater is filtered in retention ponds.

Trends and Challenges

There are numbers of trends that should be considered in the park and recreation planning process. In this post-industrial age of rapid change, constant monitoring will be required to ensure awareness of trends that have a bearing on park programming, utilization, and sustainability. In the case of Edina, the City will need to continually provide sensitive and appropriate responses to changes in social, demographic, technological, economic, political and environmental trends. The magnitude of these changes will demand flexibility in planning practices to appropriately respond to rapidly changing needs.

In 2015, the EPR completed a Strategic Plan to guide decision-making, priorities, and plans over the next 10+ years. This chapter of the 2018 Comprehensive Plan is structured around five "Key Development Areas" that were identified and discussed in the 2015 Strategic Plan. With the "Key Development Area" as a foundation, content in the Comprehensive Plan has been structured as goals, policy statements, and action items applicable to policies.

Goals and Policies

The Goals and Policies section is organized around five sections: 1) Parks, Open Space, and Trails; 2) Natural Resources and Sustainable Parks; 3) Recreational Facilities; 4) Recreational Programs; and 5) Finance and Management.

Parks, Open Spaces and Trails

Goal 1: Ensure that parks, recreational facilities, and trails are a source of community pride by providing a balance of well connected, active and passive spaces that reflect high quality design principles and maintenance standards and appreciation of the arts; that allow residents to engage in healthy activities and engage in enriching experiences.

Policy I-A: The City will devote a minimum of 15 percent of Edina's land area to parkland and open spaces.

Policy I-B: The City will work to meet NRPA guidelines indicating a need for 15-20 miles of additional trails in Edina.





Policy 1-C: It is the intent of the City to maintain and, when feasible, increase its current park and open space property. The City, on a case by case basis, will consider the sale, swap, or disposal of park property, as deemed in the best interest of the City.

Goal 2: Encourage and support active lifestyles through use of City Parks and participation in City sponsored recreational programs.

Policy 2: The City will, through the EPRD, develop promotional and educational materials about the benefits of an active lifestyle and the relationship between health and parks and recreation.

Goal 3: Develop plans based on research and analysis of current trends, input from community members, input from City departments and Commissions, state-of-the art approaches, and best practices to ensure: a) that parks, recreation, and trail needs are documented, b) plans are developed with broad participation from the community, and c) capital expenditures for future investments in parks and recreational facilities and services are justifiable.

Policy 3-A: The City will follow recommendations outlined in the 2015 Comprehensive Parks and Recreation Strategic Plan, Vision Edina 2015 and the 2017/2018 Big Idea Workshops as one of its guides for investments in parks, recreational facilities and trails.

Policy 3-B: The City will update its Parks Master Plan every ten years (or less) to guide use, growth, improvements, developments, and capital expenditures for all Community and Special Use parks, recreational facilities, and trails.

Policy 3-C: The City of Edina has utilized Small Area Plans to provide long-range vision for land use and development in specific areas of the city. The ERPD and PARC will support the successful development and execution of these plans through a proactive engagement process in planning how parks and green spaces fit in these development plans.

Natural Resources and Sustainable Parks

Goal 1: Protect, enhance, engage, and restore our urban forests, natural areas, and water resources to sustain a healthy, diverse, and balanced natural environment for all to enjoy and understand. Wildlife will be nurtured and protected. Animal and bird populations that are considered a threat to public health or safety, or may be considered hazardous to the environment or infrastructure within Edina, will be proactively managed.

Policy 1-A: The City will include a section on how to best promote, improve, or maintain our natural resources in each new Master Park Plan.

Policy 1-B: The City will exhibit leadership in the area of sustainability in our park system to support the health of our parks and open spaces.

Policy 1-C: The City will develop a wild life management program to reduce wild life migration away from their primary habitat.

Recreation Facilities

Goal 1: Provide safe, clean, and reliable facilities and program spaces that provide users the highest level of value, which supports their health and wellness, while supporting financial sustainability for the



City in the future.

Policy I-A: The City, through EPRD, will maximize the use of enterprise facilities primarily, but not exclusively, for Edina residents.

Policy I-B: The City will manage enterprise assets as fee-based revenue generating facilities that support programs and collectively cover all expenses including capital investments, land purchases, and all operating expenses.

Policy I-C: The City will exhibit leadership in matching facility space and utilization with the future needs of our community.

Recreation Programs

Goal I: Develop, provide, and manage recreation programs to support the community's need for health and wellness, individual skill development, and community connectivity in a safe and enjoyable environment.

Policy I-A: The City will develop recreation programs that emphasize Edina as a learning community.

Policy I-B: The City will develop recreation programs that exhibit a balance of inclusion across generations, skills, economic conditions and seasons.

Policy I-C: The City will develop recreation programs will include aspects of art, culture, health, sustainability and also support unstructured recreation.

Policy I-D: The City will prioritize program development that focuses on enhancing health and activity for all ages, while providing special consideration for our youth population.

Finance and Management

Goal I: Provide and encourage use of parks, trails, facilities, and programs that deliver on the community's expectations for a safe and enjoyable experience while keeping the infrastructure of the system in a quality state.

Policy I-A: The City, through EPRD, will provide a high level of park maintenance to achieve all aspects of our EPRD vision.

Policy I-B: The City, through EPRD, will form partnerships when appropriate to provide new services or facilities to Edina residents.

Policy I-C: The City will remain open to unique ideas and opportunities to enhance financial leverage to capitalize and operate the park system.

Policy I-D: The City, through EPRD, will demonstrate its commitment to inclusion and diversity across a broad range of the Edina community.

Policy I-E: When planning and making improvements, EPRD will consider impact to the brands of both the City of Edina and its park system.

Policy I-F: EPRD will build strong connections with established neighborhood organizations to best understand and serve specific needs in those areas (nodes).



- Policy I-G: To ensure transparency, accountability and sustainability of Edina assets, ERPD staff will work with the City Manager to renew long term business plans for the park system's our Enterprise facilities every third year. The structure, content, and oversight of these plans will be at the sole direction of the City Council in coordination with the Edina City Manager.
- Policy I-H: The ERPD will use benchmarking to assess progress against our Vision.
- Policy I-I: ERPD will maintain a focus on its Comprehensive Plan by including a 2018 Comp Plan self-audit in its work plan every third year.

1995 Revised Inventory Guidance

In 1995, the National Recreation and Park Association (NRPA) and the Academy of Park and Recreation Administration (APRA) revised the suggested classifications for parks, recreation areas and open spaces. The key changes were the inclusion of park-school sites, athletic fields, private park/recreation facilities, natural resource areas/preserves and greenway classifications. This new classification system states that there are essentially two types of park and recreation land:

- Privately owned land that contributes to the public's park and recreation system.
- Publicly owned land.

Examples of privately owned land that contribute to the public's park and recreation system would include:

- Edina Country Club
- Interlachen Country Club
- Church-owned properties
- Southdale YMCA
- The meadows in White Oaks neighborhood
- Power line easements
- Other miscellaneous privately owned vacant space

These privately-owned spaces and facilities provide the public with valued park and recreation services and benefits.



CITY OF EDINA

4801 West 50th Street

Edina, MN 55424

www.edinamn.gov

Date: June 14, 2022

Agenda Item #: VII.B.

To: Parks and Recreation Commission

Item Type:

Report and Recommendation

From: Perry Vetter, Parks and Recreation Director

Item Activity:

Subject: 2022 Work Plan Discussion

Discussion

ACTION REQUESTED:

Discuss and provide updates to the 2022 Commission Work Plan.

INTRODUCTION:

The 2022 Commission Work Plan is attached for discussion and updates. This version includes revisions to commissioner assignments.

ATTACHMENTS:

2022 PARC Work Plan



Commission: Parks & Recreation Commission

2022 Annual Work Plan Proposal

Initiative # 1	Initiative Type <input type="checkbox"/> Project <input checked="" type="checkbox"/> Ongoing / Annual <input type="checkbox"/> Event Council Charge <input type="checkbox"/> 1 (Study & Report) <input type="checkbox"/> 2 (Review & Comment) <input type="checkbox"/> 3 (Review & Recommend) <input checked="" type="checkbox"/> 4 (Review & Decide)		
Present information about Parks and Recreation facilities, services, and systems with up to six community groups.	Deliverable Presentation	Leads Good (lead), Haas, Weaver, Presthus (S)	Target Completion Date
Progress Q1: Content has been determined around 1) Parks, 2) Recreation Programming, 3) Enterprise Facilities, 4) Funding. Would utilize Town Talk opportunities and searching for other community-based opportunities. Newly appointed members will meet with leads to onboard for this item.			
City Council Feedback: Suggested to review any PTO groups for possible presentations.			

Initiative # 2	Initiative Type <input checked="" type="checkbox"/> Project <input type="checkbox"/> Ongoing / Annual <input type="checkbox"/> Event Council Charge <input type="checkbox"/> 1 (Study & Report) <input type="checkbox"/> 2 (Review & Comment) <input checked="" type="checkbox"/> 3 (Review & Recommend) <input type="checkbox"/> 4 (Review & Decide)		
Report and provide recommendations on alternative funding sources for park related improvements including parks, facilities, and enterprise upgrades. The report will include a philanthropic wish list	Deliverable: Report and recommendation to Council	Leads Ites (lead), Haas, Pfuhl, Doscotch,	Target Completion Date
Progress Q1: Staff has shared draft information with initiative leads. Newly appointed members will meet with leads to onboard for this item.			
Progress Q2:			

Initiative # 3	Initiative Type <input checked="" type="checkbox"/> Project <input type="checkbox"/> Ongoing / Annual <input type="checkbox"/> Event Council Charge <input checked="" type="checkbox"/> 1 (Study & Report) <input type="checkbox"/> 2 (Review & Comment) <input type="checkbox"/> 3 (Review & Recommend) <input type="checkbox"/> 4 (Review & Decide)		
Research opportunities to expand volunteer assistance for park initiatives.	Deliverable Report to staff.	Leads Strother (Lead), Weaver, Welsch	Target Completion Date
Progress Q1: All leads have been newly assigned to this item and will meet with staff on prior members ideas for this initiative.			
Progress Q2:			

Initiative # 4	Initiative Type <input checked="" type="checkbox"/> Project <input type="checkbox"/> Ongoing / Annual <input type="checkbox"/> Event Council Charge <input type="checkbox"/> 1 (Study & Report) <input type="checkbox"/> 2 (Review & Comment) <input type="checkbox"/> 3 (Review & Recommend) <input type="checkbox"/> 4 (Review & Decide)		
Provide support with educational opportunities for the Local Option Sales Tax in the community as needed.	Deliverable Attend events to share information.	Leads Doscotch, Ites, Good, Spanhake	Target Completion Date
Progress Q1: Leads are willing to support staff driven opportunities on this initiative.			
City Council Feedback: Ensure commissioners receive educational materials.			

Initiative # 5	Initiative Type <input checked="" type="checkbox"/> Project <input type="checkbox"/> Ongoing / Annual <input type="checkbox"/> Event Council Charge <input type="checkbox"/> 1 (Study & Report) <input checked="" type="checkbox"/> 2 (Review & Comment) <input type="checkbox"/> 3 (Review & Recommend) <input type="checkbox"/> 4 (Review & Decide)		
Review and Comment on amendments to the Park ordinances being recommended by staff for update.	Deliverable Comment on ordinance updates	Leads Strother (lead), Doscotch, Pfuhl, Presthus (S)	Target Completion Date March 2022
Progress Q1: Staff will deliver recommendations for commissioner review.			
City Council Feedback: Suggested having Race and Equity review prior to bringing forward changes.			

Initiative # 6	Initiative Type <input checked="" type="checkbox"/> Project <input type="checkbox"/> Ongoing / Annual <input type="checkbox"/> Event Council Charge <input type="checkbox"/> 1 (Study & Report) <input checked="" type="checkbox"/> 2 (Review & Comment) <input type="checkbox"/> 3 (Review & Recommend) <input type="checkbox"/> 4 (Review & Decide)		
Review and comment on the proposed Grandview plan.	Deliverable Comment on plan.	Leads Haas (lead), Pfuhl, Weaver, Spanhake	Target Completion Date
Progress Q1: Review conducted as part of Jan. 11, 2022, regular meeting agenda. Engagement on the pedestrian bridge public art component is currently open for feedback.			
Progress Q2: HRA took action on the sale of the project during its June 2, 2022 agenda.			



CITY OF EDINA

4801 West 50th Street

Edina, MN 55424

www.edinamn.gov

Date: June 14, 2022

Agenda Item #: IX.A.

To: Parks and Recreation Commission

Item Type:

Other

From: Perry Vetter, Parks and Recreation Director

Item Activity:

Subject: Informational Items

Information

ACTION REQUESTED:

None, informational only.

INTRODUCTION:

Attached are informational items of note from the Parks and Recreation Department.

ATTACHMENTS:

Informational Items - June 2022



Date: June 14, 2022

To: Park and Recreation Commission

From: Perry Vetter, Parks & Recreation Director

Subject: Informational Items

Information / Background:

4th of July Parade

Fourth of July Parade planning is underway. Registration to participate in the parade is now open on the Edina Parade website. Also, new this year, the Rosland Park Fireworks will take place on July 3. Visit www.edinaparaade.org for the most up-to-date information.

Braemar Arena

After a quiet Memorial Day week, the Arena welcomes the Summer Showdown tourney to Braemar this weekend. This is the first of three weekend events that will bring us to the 4th of July. Next week will also mark the start of our busy summer camp/clinic season.

Rosland Park Pedestrian Bridge Closure Update

MnDOT's pedestrian bridge over Highway 62 at Rosland Park remains closed due to damage resulting from a vehicle collision in January. MnDOT plans to repair the bridge over the summer and, if all goes well, the re-open the bridge sometime in August.

Centennial Lakes Park

The 2022 Farmers Market season begins Thursday, June 9 and runs Thursdays from 3-7p.m. through September 29. There will be several new vendors, weekly live music and an expanded seating area where people can enjoy beer, wine or seltzer from Edina Liquor. Alcohol will be sold inside Hughes Pavilion, with seating areas inside the pavilion and just outside it where people can watch and listen to the live music. Last call will be at 6 p.m. Also, this year, the live music begins an hour later, running from 4-6 p.m., to better fit visitor schedules.

Summer free concerts will also be held at the park beginning in June with concerts on Monday, Wednesday and Sunday evenings at 7 p.m. Children's concerts are held on Tuesdays & Thursdays at 11a.m. Movies in the Park will be held monthly on Fridays during June, July and August.

Edina Aquatic Center Opening

The Edina Aquatic Center is set to open on Friday, June 10 for the season.

Edina Senior Center

The Senior Center has had a multitude of classes and programs start up this week including Gentle and Hatha Yoga; Agility, Balance and Core Strength classes; Mobility, Strength and Memory class; Canasta class and a Senior Learning Network Program. The ACBL Bridge games have been gaining popularity and bring in 80 people every Monday and Wednesday.

Forestry

The City's tree refuse dump was opened for the first time in over a decade for residents to dispose of tree and branch debris from the recent May storms.

Summer Art Camps

Fred Richards Park is nearly ready for campers to converge upon the clubhouse for camp, starting June 13. We are excited to welcome around 20 campers per week to paint, build, create, and play throughout the summer.

Parks & Recreation

Yoga on the Courtyard - Yoga on the Courtyard is back at Braemar Golf Course by popular demand. The class is full and runs through July 28.

Fitness in the Parks - Local fitness organizations partnered with the Edina Parks and Recreation Department to offer free fitness classes at Rosland Park on Tuesday evenings from 6-7 p.m. The program kicked off on June 7 and will run through Aug. 9.

Parks and Recreation Summer Intern

We are excited to welcome Rachel Salzer to our team as the first intern the Parks and Recreation Department has had in over a decade! Rachel comes to us from the University of Minnesota and has years of experience working for Parks & Recreation in the City of St. Louis Park.

Seeking Booth Vendors for Dog Days of Summer Pawty

This a new, free summer event which will celebrate the four-legged friends and the families that love them! We are looking for businesses and organizations that would be interested in hosting a booth in areas such as rescue groups, pet adoption agencies, pet food and supply, dog-focused crafters, etc. The event will be held August 6 10a.m.- 1p.m. at Van Valkenburg Park.

Summer Private Tennis & Pickleball Lessons

The Parks and Recreation Staff is offering private tennis and pickleball lessons for youth and adults this summer. Lessons are tailored for beginner or intermediate and are \$35/45-minute lesson. Maximum of two people per time slot.



CITY OF EDINA

4801 West 50th Street

Edina, MN 55424

www.edinamn.gov

Date: June 14, 2022

Agenda Item #: IX.B.

To: Parks and Recreation Commission

Item Type:

Other

From: Perry Vetter, Parks and Recreation Director

Item Activity:

Subject: Upcoming Meetings and Events

Information

ACTION REQUESTED:

None, informational only.

INTRODUCTION:

Upcoming 2022 meetings and events are attached.

ATTACHMENTS:

Upcoming 2022 Meetings and Events

STAFF REPORT



Date: June 14, 2022

To: Park and Recreation Commission

From: Perry Vetter, Parks & Recreation Director

Subject: Upcoming 2022 Meetings and Events

Date	2022 Meeting/Event	Time	Location*
Tues. June 14	Regular Meeting	7:00 pm	Braemar Golf Course
Tues. July 12	Regular Meeting	7:00 pm	Braemar Golf Course
**Mon. Aug. 8	Regular Meeting	7:00 pm	Braemar Golf Course
Tues. Sept. 13	Regular Meeting	7:00 pm	Braemar Golf Course
Tues. Oct. 11	Regular Meeting	7:00 pm	Braemar Golf Course
Oct TBD	2023 Work Plan Review w/ Council (Chair only)	5:30 pm	City Hall
**Tues. Nov. 1	Regular Meeting	7:00 pm	Braemar Golf Course
Tues. Dec. 13	Regular Meeting	7:00 pm	Braemar Golf Course
TBD	All Commission Chair and Liaison Meeting	-	TBD

* Location update – Meetings will be held in the Hoyt and Blanchard Room, lower level of Braemar Golf Course, 6364 John Harris Drive, Edina.

** Date Adjustments – Due to the 2022 election season the August and November meeting dates have been adjusted as listed.