



Building a Better World
for All of Us®

SUPPLEMENTAL LETTER AGREEMENT

May 23, 2018

RE: City of Edina
York Avenue Sanitary Sewer
Extension – Engineering Study
SEH No. EDINA145878 10.00

Mr. Chad Millner, PE
Director of Engineering
City of Edina
Engineering and Public Works Facility
7450 Metro Boulevard
Edina, MN 55439

Dear Chad:

Short Elliott Hendrickson Inc. (SEH®) is pleased to submit this proposal to the City of Edina (City) for engineering services related to the referenced project. This proposal is based on our discussions with City staff and review of the City's Southeast Edina Sanitary Sewer Preliminary Engineering study in April 2017.

We understand the City desires to better define the proposed sanitary sewer system in the York Avenue (Hennepin County CSAH 31) corridor. This definition will allow staff to proactively program and execute future improvements. Improvements are needed due to current and projected future redevelopment in southeastern Edina. The results of the study will provide the City with the following critical data:

- A defined sanitary sewer system alignment within Adams Hill Park, along York Avenue and 65th/66th Streets as shown in Exhibits 1 & 2 attached.
- A preliminary horizontal and vertical sanitary sewer system alignment that is feasible to construct and to what extent impacts will be to achieve installation.
- Hennepin County approval of the proposed alignment and improvements.
- Further refined cost estimates to better inform the City's Capital Improvement Plan (CIP) for future implementation of phased infrastructure projects.

If accepted, this supplemental letter agreement describes how we will provide these services for a not-to-exceed fee of \$49,353.00.

This amount is detailed in the attached Task Hour Budget (THB) and includes our reimbursable expenses. We will bill the City monthly for reimbursable expenses and on an hourly basis for labor. We will provide these services in accordance with our Agreement for Professional Engineering Services dated June 4, 2013, herein called the Agreement.

Engineers | Architects | Planners | Scientists

Short Elliott Hendrickson Inc., 10901 Red Circle Drive, Suite 300, Minnetonka, MN 55343-9302
SEH is 100% employee-owned | sehinc.com | 952.912.2600 | 800.734.6757 | 888.908.8166 fax

Our anticipated project production schedule is given in the table below.

| Anticipated Project Schedule | | |
|------------------------------|--|------------------------------|
| Work Item No. | Work Item Description | Work Item Key Milestone Date |
| 1 | Begin Data Collection | June 5, 2018 |
| 2 | Meeting with Hennepin County to Discuss Opportunities and Constraints along York Avenue Corridor | Week of June 11 or 18, 2018 |
| 3 | Progress Meeting with City Staff to Review Feasible Sanitary Sewer Alignments | Week of July 16 |
| 4 | Meeting with Hennepin County to Review Proposed Sanitary Sewer Alignment | Week of August 6 |
| 5 | Complete Draft Engineering Study | September 2018 |
| 6 | Complete Final Engineering Study | October 2018 |

This Supplemental Letter Agreement, THB, and the Agreement represent the entire understanding between the City of Edina and SEH in respect to the project and may only be modified in writing if signed by both parties.

We appreciate the opportunity to offer our professional services to the City and continuing our valuable working relationship. Please contact me at 952.912.2616 or tmuse@sehinc.com with questions regarding this proposal.

Sincerely,

SHORT ELLIOTT HENDRICKSON INC.



Toby Muse, PE
Project Manager

Enclosures

p:\ae\le\edina\145878\1-gen\10-setup-cont\03-proposal\sla ltr york san swr extnsn 052118.docx

Accepted on this ____ day of _____, 2018

City of Edina, Minnesota

By: _____
Name

Title

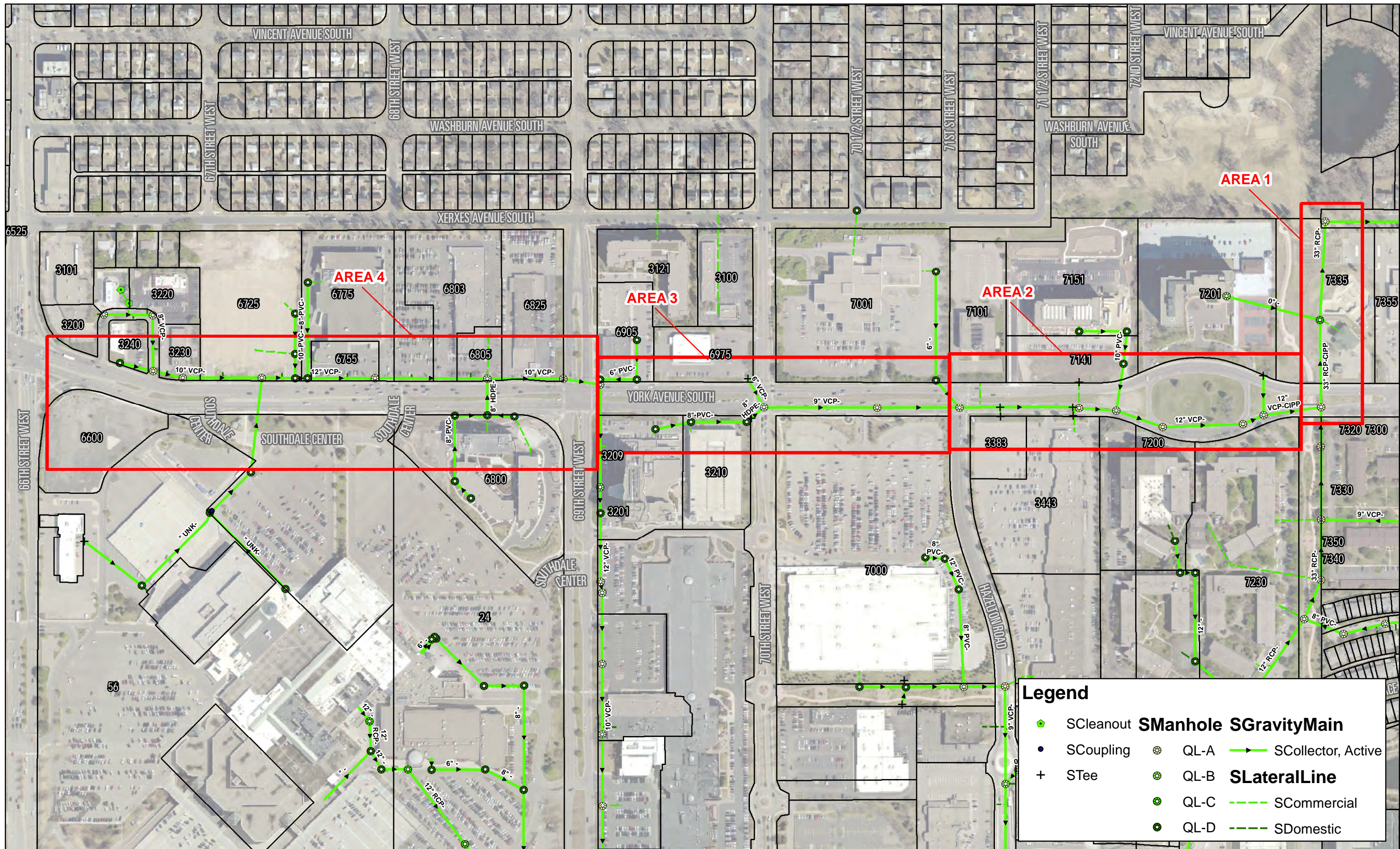
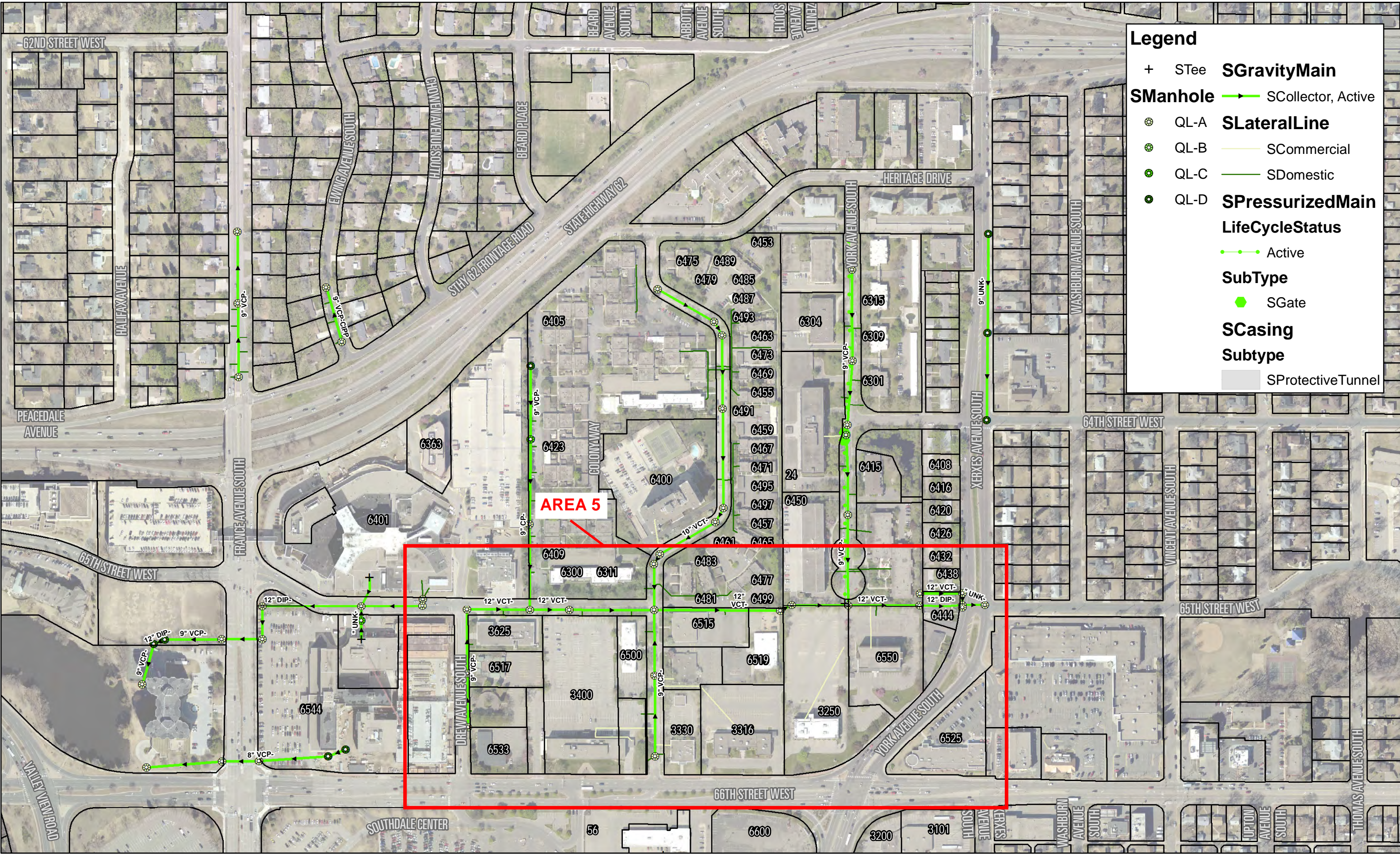


EXHIBIT 1



Legend

+ STee

QL-A

QL-B

QL-C

QL-D

SGravityMain

SManhole

SLateralLine

SCommercial

SDomestic

SPressurizedMain

LifeCycleStatus

SubType

SCasing

Subtype

SProtectiveTunnel

→ SCollector, Active

— SCommercial

— SDomestic

● SPressurizedMain

● Active

● SGate

●

●



**Project Name: York Avenue Sanitary Sewer Extension -
Engineering Study**

Client: City of Edina

SEH Project #145878

Date: May 23, 2018

| | | Reimbursable Expenses (25) | Total |
|--|---|-------------------------------|-------------------|
| Task #1 - Project Management | | | |
| 1.1 | Contract and General | | |
| | Contract Administration | | |
| | | | |
| | Subtotal Fees | | \$1,888.19 |
| | | | |
| 1.2 | Meetings (Notice, Agenda, Materials, Minutes) | | |
| | Preliminary scoping meetings with Client (1) | | |
| | Predesign meeting with private utilities | | |
| | Hennepin County meetings (2) | | |
| | Preliminary design review meeting (3) | | |
| | City Council meeting (4) | | |
| | Draft final engineering study meeting (5) | | |
| | | | |
| | Subtotal Fees | | \$5,227.32 |
| | | | |
| Task #2 - Preliminary Engineering & Study (6) | | | |
| 2.1 | Data Collection | | |
| | Collect Data from Client/Hennepin County (CAD, GIS, Utility/Street As-Builts, Structure Surveys, etc) (7) | | |
| | Digital parcel mapping (8) | | |
| | Aerial mapping | | |
| | Existing sanitary sewer system evaluation (24) | | |
| | | | |
| | Private Utility Coordination Process | | |
| | Conduct Utility Gopher State One Call & Collect Private Utility Maps | | |
| | | | |
| | Subtotal Fees | | \$2,234.49 |
| | | | |
| 2.2 | Geotechnical Investigation (9) | | |
| | | | |
| 2.3 | Topographic Survey (10) | | |
| | | | |
| 2.4 | Field Investigation | | |
| | Review Fairview Area existing conditions (11) | | |
| | Review Adams Hill Park existing conditions (11) | | |
| | Subtotal Fees | | \$902.29 |



Project Name: York Avenue Sanitary Sewer Extension - Engineering Study

Client: City of Edina

SEH Project #145878

Date: May 23, 2018

| | | Reimbursable Expenses (25) | Total |
|------------|--|----------------------------|--------------------|
| 2.5 | Preliminary Sanitary Sewer Design (12)(13)(14) | | |
| | Create CAD base file | | |
| | Incorporate available data info into basemap (Utility Maps, City GIS linework, Data Collection information, etc.) (15) | | |
| | Develop project existing surface model (16) | | |
| | Develop typical sections for construction methods proposed (open-cut installation vs. trenchless pits) | | |
| | Establish proposed pipe alignment (horizontal/vertical) and stationing; identify proposed manhole locations | | |
| | Setup initial pipe model (profile, assemblies, corridor) | | |
| | Sanitary sewer capacity analysis (23) | | |
| | Identify and list potential public/private utility conflicts (17)(18) | | |
| | | | |
| | Drainage/Storm Sewer Design (19) | | |
| | Water Main Design (19) | | |
| | Street Lighting (19) | | |
| | Traffic Control Design (19) | | |
| | | | |
| | Quantity Calculations and Feasibility Level Cost Estimating (20) | | |
| | | | |
| | Subtotal Fees | | \$25,386.47 |
| 2.6 | Right of Way/Easements (21) | | |
| | Identify permanent right of way/easement needs | | |
| | Identify temporary right of way/easement needs | | |
| | | | |
| | Subtotal Fees | | \$1,095.17 |
| 2.7 | Prepare Engineering Study (22) | | |
| | Prepare project area figures | | |
| | Develop draft engineering study | | |
| | Develop final engineering study | | |
| | Prepare and submit pdf copies of the study | | |
| | | | |
| | Subtotal Fees | | \$11,224.50 |



**Project Name: York Avenue Sanitary Sewer Extension -
Engineering Study**

Client: City of Edina

SEH Project #145878

Date: May 23, 2018

| | | Reimbursable Expenses (25) | Total |
|--|------------------------------|-------------------------------|-------------|
| Task #1 - Project Management | | | |
| | Task Hours Summary | N/A | 54 |
| | Task Fee Summary | \$237.70 | \$7,353.21 |
| Task #2 - Preliminary Engineering | | | |
| | Task Hours Summary | N/A | 362 |
| | Task Fee Summary | \$1,156.87 | \$41,999.78 |
| Project Summary | | | |
| | Project Hours Summary | N/A | 416 |
| | Project Fee Summary | \$1,394.57 | \$49,353.00 |

Notes:

- (1) The first scoping kickoff meeting was already held at Edina Public Works on March 29, 2018. The second kickoff meeting was held at Edina Public Works on May 8, 2018.
- (2) Assumes SEH will lead up to three (3) meetings with Hennepin County staff. The first meeting will be held to determine sanitary sewer alignment opportunities/constraints from County perspective. The second meeting will be held to review the proposed alignment and discuss anticipated impacts to York Avenue during construction. The third meeting is included for reviewing the draft study.
- (3) Assumes two (2) meetings with City staff during preliminary design to review project design issues/constraints/opportunities
- (4) Assumes City Council meeting attendance will not be required
- (5) Assumes one (1) meeting with City staff to review the draft engineering study
- (6) Preliminary engineering tasks will use sanitary sewer data/recommendations from the City's Southeast Edina Sanitary Sewer Preliminary Engineering Study dated April 2017.
- (7) If as-built drawing information does not agree with line work in the GIS data, the City will resolve the disagreement and transmit updated data to SEH. This proposal assumes all utility data is complete within the City's geodatabase (and does not include any time to add or update any utility features) during the project. If updates are requested by the City, we will provide them as an additional service.
- (8) Obtain latest edition of digital GIS parcel mapping data from Hennepin County's property database.
- (9) Geotechnical investigations are not included. Instead, SEH will use previous soil boring data
- (10) A topographic survey is not included. Instead, SEH will use Light Detection and Ranging (LiDAR) data and/or topographic survey information obtained during the data collection phase from the City/Hennepin County/others, if available.
- (11) Includes field review and photos of existing conditions where proposed sanitary sewer alignment is not located in a street.
- (12) Preliminary design deliverable will be feasibility level plan and profile sheets (11x17) showing: the proposed alignment and associated profile of the sanitary sewer system including proposed manhole locations, aerial photography, existing contours, base map, street names, and potential utility conflicts. Does not include sanitary sewer service location, sizing, or cost estimating since the scope of future development is unknown.
- (13) Includes tabular summary of anticipated conflicts with public/private utilities



**Project Name: York Avenue Sanitary Sewer Extension -
Engineering Study**

Client: City of Edina

SEH Project #145878

Date: May 23, 2018

-
- (14) Assumes York Avenue corridor will be split up into 5 areas as shown in Exhibit 1 & 2. Assumes 2 iterations of proposed sanitary sewer alignment per area.
 - (15) Includes review comparison between City utility as-built/structure data vs. GIS data
 - (16) Assumes use of topographic survey data obtained from Centerpoint Energy 2016 Beltline project.
 - (17) Assumes use of utility pothole data obtained from Centerpoint Energy design from 2016 Beltline project, GSOC utility mapping provided by private utilities and City GIS utility information.
 - (18) Utility conflicts will be identified on the preliminary plan and profile sheets
 - (19) Not included with this proposal.
 - (20) Opinion of probable cost will be considered a Class 3 estimate (plus 50%/minus 20%) based on ASTM E2516-11 Standard Classification for Cost Estimate Classification System
 - (21) Includes identifying locations of temporary or permanent easement needs beyond the right of way only. Locations will be shown on the preliminary plan and profile sheets. Right of way easement sketches/documents and estimating acquisition costs are not included in this proposal.
 - (22) Includes executive summary, introduction, background, and summary of preliminary designs and opinions of probable costs. Discussion will include why particular alignments reviewed during preliminary engineering were not feasible and/or not included. The appendix will include project cost and preliminary plans for each area analyzed. The report will be submitted in .pdf format. Assumes paper copy submittal is not required.
 - (23) Assumes capacity analysis, if required to determine pipe diameter sizes based on future development needs, will be completed by others.
 - (24) Based on discussions with City staff, an existing condition evaluation of the existing sanitary sewer system is not required. The scope of work contained herein excludes review and evaluation of closed circuit television (CCTV) video/logs, structure inventory reports, recommended rehabilitation
 - (25) Includes employee mileage, reproductions and computer charges.