



Updates to Commissions

11 January 2018



GREATER SOUTHDAL AREA PLANNING FRAMEWORK

stage 3/4 work plan

work group composition

Neighborhood representatives

Colleen Wolfe
Julie Chamberlain
Chris Cooper

Planning Commission appointments

Steve Hobbs
Jo Ann Olson
John Hamilton

Commercial property/business owner representatives

Jim Nelson
Ben Martin
Don Hutchison

City Council appointments

Steve Brown (*neighborhood*)
Michael Schroeder (*community-wide*)
Peter Fitzgerald (*commercial property/business owner*)
Amy Wimmer (*community-wide*)

Biko Associates

Planning and policy lead

Architecture Field Office

Urban design lead



Work Group deliverables

- ① An aspirational small area plan framing the evolution of the Greater Southdale Area
- ② Policy supporting that evolution consistent with Comprehensive Plan requirements and opportunities present in the area
- ③ Innovation and invention in the plan that aligns with Edina's and the area's history
- ④ Outreach that ensures voices are heard during the planning process
- ⑤ Leadership for the plan's development from representatives of the community

meetings

Work Group meetings and work sessions
Open House meetings
Update meetings

methods

Shaping of the process and deliverables by the Work Group
Dialog among members of the Work Group with guidance from consultant team
Open Work Group meetings, with public presence and participation encouraged
Public meetings and presentations by Work Group members with assistance from consultants
Communications about Work Group progress shared through social media



Philosophy

- ① Ensure consultant expertise is well aligned with Work Group needs and obligations
- ② Orient consultants as resources supporting the efforts of the Work Group, not as directors of the Work Group
- ③ Focus interactions with the community on the Work Group, not the consultants
- ④ Orchestrate meetings to allow for more dialog and less presentation, while encouraging community presence and participation
- ⑤ Define Work Group meetings and dialog topics with guidance from the consultant
- ⑥ Allow the number of meetings to be somewhat organic, allowing for diversion to necessary topics within a general guide
- ⑦ Provide opportunities for the Work Group to accomplish thinking without consultant assistance at key points in the process



Part 1 activities – learning, discovering, understanding

Dialog that highlights necessary policy guidance
Work Group meetings and work sessions
Update to Planning Commission and City Council

Part 2 activities – putting it together

Work Group meetings and work sessions
Preparation of draft(s) district plan
Planning Commission review of district plan
Open House: Present Draft District Plan

Part 3 activities – documenting directions

Work Group meetings and work sessions
Revise draft Small Area Plan as necessary
Preparation of final district plan
Open House: Present draft Final District Plan
Planning Commission Public Hearing
City Council Public Hearing

Stage 3/4 orientation

Work Group Kick-off with a focus on scope and schedule, particularly for interactions with the public and Planning Commission

workshop dialogs

- ① Relationship of Greater Southdale Area to the community and region, key features and opportunities
- ② Economic and market potential
- ③ Infrastructure support
- ④ Public and publicly-accessible space
- ⑤ Land use patterns and key uses
- ⑥ Development parameters (beyond height, FAR, intensity), parcel relationships, and transitions
- ⑦ District and neighborhood connections in the public realm
- ⑧ Design guidance focused on district experiences
- ⑨ Implementation strategies
- ⑩ Other topics...



schedule

Part 1 activities – learning, discovering, understanding

Continuing through mid April

Work Group Meetings (8)

Work Group Session (2)

Updates to commissions and City Council (April)

Part 2 activities – putting it together

Mid April through mid July

Work Group Meetings (4)

Work Group Sessions (3)

Open House (early June)

Updates to commissions and City Council (late June and early July)

Part 3 activities – documenting directions

Mid July through October

Work Group Meetings (2)

Work Group Sessions (2)

Open House (mid September)

Updates to commissions and City Council (late September and early October)

Public Hearings (late October)

Meetings

Work Group Meetings (14)

dialogs with the consultants as guides and provokers

Work Group Sessions (7)

meetings conducted without the consultants, perhaps aligned for coordination with the Planning Commission's Comprehensive Plan efforts

Open Houses (2)

semi-formal opportunities for public input and exchange

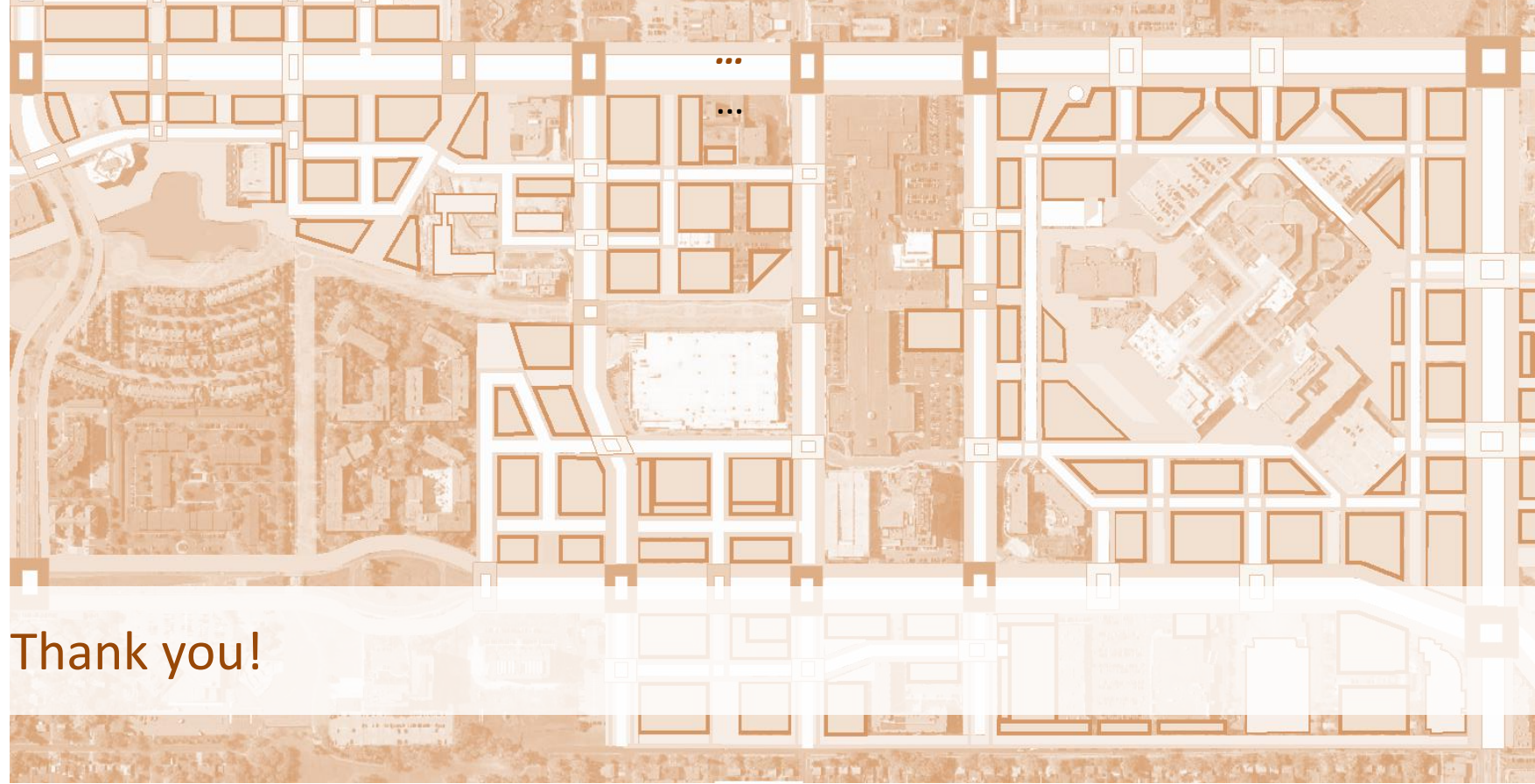


Dialog and directions

- ① This is a plan for an Edina district plan, not a small area; we are looking to break the district into subcomponents based on connections, character, scale
- ② Connections within and beyond the district are key; the district best aligns with the community when it is connected
- ③ Transitions will be created as public seams, not edges, so that pieces of the district are related around a well conceived public realm
- ④ The boundaries are necessarily blurry, so there is some “creep” as a way of best understanding relationships
- ⑤ Parameters for development might consider factors other than height, density and intensity
- ⑥ Directions clearly being framed by the Work Group; neighbors are participating as a part of each meeting
- ⑦ ...



questions



Thank you!



GREATER SOUTHDAL AREA PLANNING FRAMEWORK
stage 3/4 work plan