



Date: October 17, 2017

To: Traffic Safety Committee

From: Nick Bauler, Traffic Safety Coordinator

Subject: Traffic Safety Report of September 8th, 2017

Information / Background:

The Traffic Safety Committee (TSC) review of traffic safety matters occurred on September 8. The Transportation Planner, Traffic Safety Coordinator, Police Lieutenant, City Engineer, Public Works Director and Assistant City Planner were in attendance for this meeting. The Traffic Safety Specialist was not able to attend and was informed of the decisions and did not object to the recommendations.

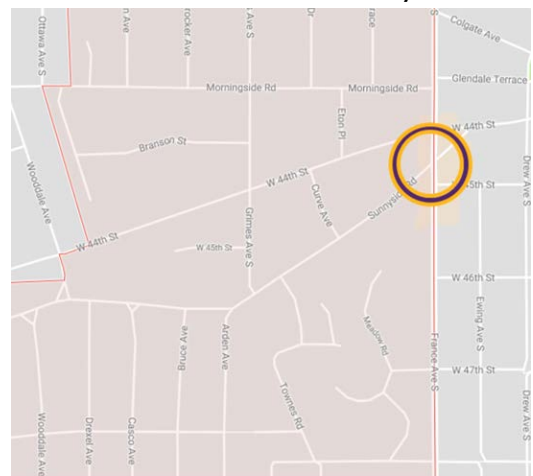
For these reviews, the recommendations below are provided. On each of the items, persons involved have been contacted and the staff recommendation has been discussed with them. They were informed that if they disagree with the recommendation or have additional facts to present, these comments can be included on the September 28 Edina Transportation Commission and the October 17 City Council meeting agendas.

Section A: Items on which the Traffic Safety Committee recommends action:

A1. Request to raise pedestrian awareness at the intersection of France Avenue and Sunnyside Road

- A resident has had issues with vehicles traveling on France Ave with vehicles not yielding to pedestrians
- France is classified as a 'Minor Arterial' road that is under Hennepin County jurisdiction
- Hennepin County's Pedestrian Safety Committee (PSC) reviewed this intersection and recommend continental crosswalk markings, and leading pedestrian interval (LPI) for France Ave at Sunnyside Rd.

After review, staff recommends the approval of Hennepin County's plans to raise pedestrian



Map: Location of France and Sunnyside (note: Edina city limits are shaded in red)

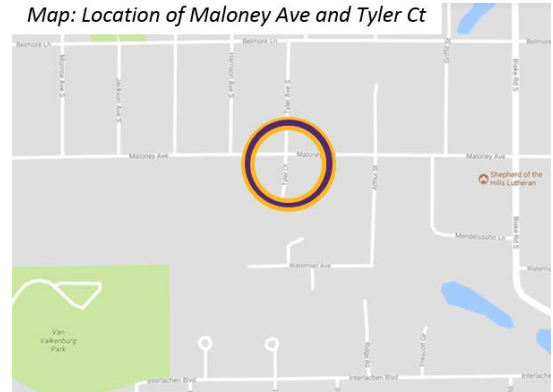
awareness on France Avenue at Sunnyside Road.

Section B: Items on which the Traffic Safety Committee recommends no action:

BI. Request for a crosswalk over Maloney Ave at Tyler Ct

- A resident requested a crosswalk at this intersection claiming Maloney has busy traffic and high pedestrian volume crossing at Tyler Ct
- Maloney Ave is a state-aided 'Collector Street'
- Maloney Ave is uncontrolled at Tyler Ct
- A sidewalk is located on the north side of Maloney Ave
- Maloney Ave totaled 11 crosses/day

Map: Location of Maloney Ave and Tyler Ct

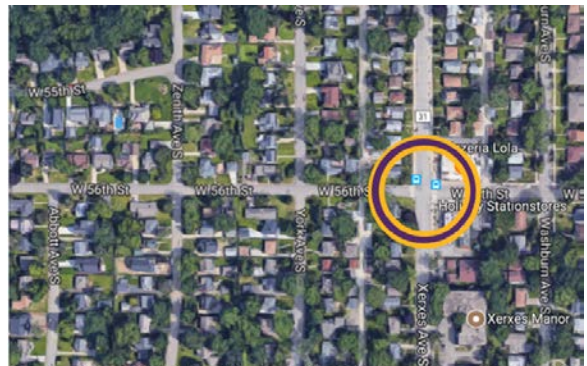


After review, staff recommends placing no crosswalk, as this intersection does not meet Edina's crosswalk warrants.

Section C: Items which staff recommends for further study

CI. Request for crosswalks in both directions at the intersection of W 56th St and Xerxes Ave

- Residents requesting a crosswalk at this intersection stating a crosswalk will increase pedestrian awareness
- Xerxes Ave borders Minneapolis
- Xerxes is a two-lane Hennepin County Road which is classified as a 'Collector Street'
- W 56th St is classified as a 'Local Street'
- This intersection is controlled with an all-way stop
- The East side of Xerxes Ave includes a gas station, a salon, a dry cleaning store and a restaurant
- This intersection has a north and southbound bus stop (route 6)
- North and Southbound crosses totaled 168 pedestrians with a two-hour peak of 45 crosses at 6:15 PM
- East and Westbound crosses totaled 202 pedestrians with a two-hour peak of 77 crosses at 6:00 PM
- All data was collected and averaged from a two-day collection period



Map: Location of W 56th St and Xerxes Ave (Note: Restaurant, Gas Station and bus stops located at this intersection)

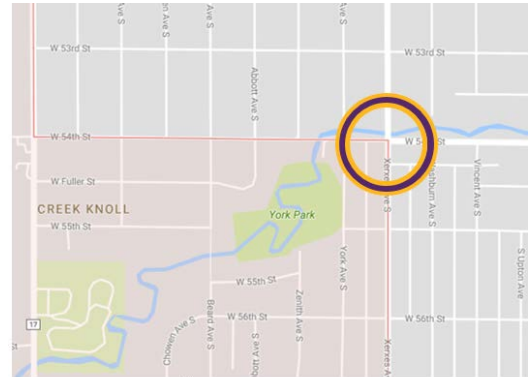


Photo: W 56th St facing east at Xerxes Ave

After review, staff recommends contacting the City of Minneapolis and Hennepin County to gather input towards placing crosswalks at this intersection, as Xerxes Ave is under Hennepin County jurisdiction and Xerxes Ave borders Minneapolis.

C2. Request for a crosswalk at W 54th St over Xerxes Ave

- Xerxes and W 54th St border Minneapolis
- Xerxes is a two-lane Hennepin County Road which is classified as a collector street
- Xerxes Ave is uncontrolled, W 54th St. is controlled by stop signs
- W 54th St leads to a dead end, one block west of Xerxes
- This intersection has a north and southbound bus stop (route 6)
- Xerxes totaled 87 pedestrian crosses with a two-hour peak at 7:15 am with 33 crosses



Map: Location of W 54th St and Xerxes Ave (Note: Edina city limits are inside the red area)

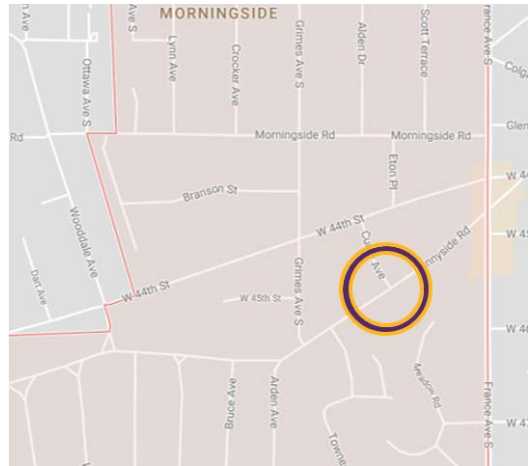


Photo: Xerxes Ave at W 54th St. facing south

After review, staff has the same recommendation as item C1 - to coordinate with the City of Minneapolis and Hennepin County.

C3. Request for crosswalks at Sunnyside Rd and Curve Ave

- A resident in the Morningside neighborhood requested a crosswalk over Sunnyside Rd and Curve Ave
- The roads of Sunnyside and Curve were reconstructed in 2016
- Sunnyside is classified as a 'Local Connector' as Curve is classified as a 'Local Street'
- Curve totaled 80 pedestrian crosses with a two-hour peak of 21 crosses at 5 PM
- Sunnyside totaled 19 pedestrian crosses with a two-hour peak of seven crosses at 1:30 PM



Map: Location of Sunnyside and Curve (Note: Edina city limits are shaded in red)

After review, staff recommends placing no *limits are shaded in red)*
crosswalk across Sunnyside Ave as it does not meet Edina’s warrants. Staff also wants
to look into Edina’s current crosswalk warrants as placing a crosswalk at Curve Ave
does meet warrants, but has a very low ADT, meaning a crosswalk in this location will
be seen by few vehicles.

C4. Request to add pedestrian crossing signage at crosswalks over W 66th St near HWY 100

- Resident states the crosswalks are difficult to see and adding signage will improve awareness traveling up to and over the bridge over HWY 100
- MnDOT installed these crosswalks during the HWY 100 improvement project in 2016
- W 66th St is classified as a 'Collector Road' and a State-Aid Road
- Sight lines exceed 350' from each direction-acceptable distances



Map: The locations of the new crosswalks on W 66th St.



Photo: W 66th St East of HWY 100 facing West



Photo: W 66th St West of HWY 100 facing East

After review, staff recommends requesting MnDOT to install signage to coordinate with the crosswalk marking they installed in 2016. Staff also wants to review Edina's crosswalk requirements in regards to consistently include signage if other agencies install new crosswalks.

C5. Request to add 'No Bicycles Beyond This Point' sign in Rosland Park pedestrian path

- Residents using the pedestrian path at Rosland Park are requesting more signage to prevent bicyclists from using the pedestrian path
- Residents fear bicyclists traveling at high speeds may hit a pedestrian
- Two signs are placed along the path at Rosland Park from W. 66th St
- W. 64th St has signage telling vehicles to share the road with bicyclists after crossing the pedestrian bridge over Crosstown Highway 62



Photo: Signage entering Rosland Park pedestrian path off W 66th St

After review, staff recommends coordinating with the Parks Department in regards to adding signage along Rosland Park trails.



Map: Rosland Park ★ = Location of current signs ★ = Requested location of additional sign

Section D: Other Traffic Safety Items handled

D1. A resident requested a speed trailer on West Shore Drive in an attempt to slow vehicles in the neighborhood. This request was forwarded to the Police Department.

D2. Request stop sign at Code and Porter. This request was studied and analyzed in November of 2015 and the Traffic Safety Committee recommended not adding a stop sign.

D3. A resident requested a 'No Parking' sign to be removed from 5228 Highwood Dr. W. Upon researching Edina's database and inspecting this sign, the sign was removed due to being improperly placed by a resident on Highwood Dr W.

D4. A resident requested a 'No Parking' sign to be placed at their residence on the 5800 Block of Abbott Ave. Neighbors guests are parking in front of the requestor's property and believe the parked vehicles are leading to unsafe situations with the requestor's child playing in the front yard. The requestor was informed there will be no limiting of parking in front of their property. The City recommended the resident to communicate with their neighbors to keep guests from parking in front of their home.

D5. A resident requested a crosswalk to be placed on Eden Avenue connecting the Edina Library/ Senior Center and Jerry's foods. The resident was informed a crosswalk with Rectangular Rapid Flashing Beacons are scheduled to be placed in this location following construction at the old bus garage location.

D6. A resident in the Chowen Park neighborhood was adding a fence to their corner lot and traffic safety inspected the fence for clear-view sight lines. After inspection, the proposed fence passed clear-view sight lines.

D7. A Request was sent to traffic safety reporting a pothole on W 76th St, west of Xerxes Avenue. Traffic safety inspected this pothole and forwarded the request to public works.

D8. A request was sent to traffic safety to place directional signs for Edina Morningside Community Church. Upon receiving request, traffic safety informed the Church, Edina does not permit the use of directional signs for churches.

D9. A resident requested traffic calming on Golf Terrace stating vehicles are traveling 'way too fast'. After collecting data on Golf Terrace, 85% speed was 29.6 MPH. The traffic calming request was denied as Golf Terrace was reconstructed in 2016.

D10. A resident placed a request to add a sidewalk on Delaney Blvd. The resident stated it is difficult to see pedestrians walking on the 'winding road'. This request has been denied as Delaney Blvd is not planned to install a sidewalk in the Edina Comprehensive Sidewalk Facilities Map.

D11. A property manager off Lincoln Drive was requesting more signage to prevent large trucks from entering the cul-de-sac in regards to the HWY 169 road closure. Upon review, there is sufficient signage entering onto Lincoln Drive stating there is no outlet, which leads to a denial in the request to add signage.

Appendix:**Crosswalk Warrants**

A. Marked crosswalks are placed at locations that are unusually hazardous or at locations not readily apparent as having pedestrian movement.

B. Marked crosswalks will only be placed in an area that has 20 or more pedestrian crossings in a two-hour period.

C. Marking for crosswalks will be established by measuring the "Vehicle Gap Time". This is the total number of gaps between vehicular traffic recorded during the average five-minute period in the peak hour. Criteria for markings are:

1) More than five gaps – pavement marking and signage only.

2) Less than five gaps – add actuated pedestrian signals.

D. Crosswalks will not be placed on arterial roads or roads with a speed limit greater than 30 mph unless in conjunction with signalization.

E. Other conditions that warrant crosswalks:

1) Routes to schools

2) Locations adjacent to libraries, community centers, and other high use public facilities.

3) Locations adjacent to public parks.

4) Locations where significant numbers of handicapped persons cross a street.

5) Locations where significant numbers of senior citizens cross a street.

F. Crosswalks will only be placed at intersections.