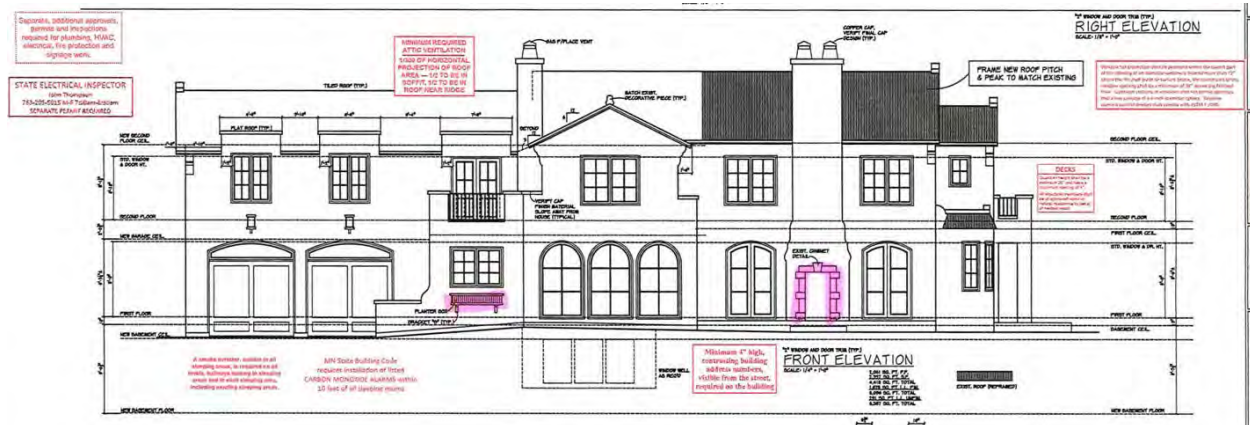


Petrocchi Residence  
4630 Drexel Avenue  
December 9<sup>th</sup>, 2022

Dear Heritage Preservation Commission,

We are requesting the approval of a certificate of appropriateness for the home as completed at 4630 Drexel Avenue without the stone fireplace surround on the chimney.



As long time residents and builder/remodeler of homes in the District, we appreciate the importance of maintaining the historic character of the neighborhood. We have successfully worked with the HPC on 8 projects in the District without any issues.

Here are examples of our work in the neighborhood:

4615 Wooddale



4620 Moorland



4505 Arden



The renovation of 4630 Drexel Avenue maintained the importance form elements and street facing facades of the original home. These elements include the original roof on the main body of the home, the façade facing Country Club Road, and the façade facing Drexel Avenue. The addition elements maintain the matching roof pitch, stucco elements, and barrel tile roof.

I agree we did not install the fake fireplace stones on the chimney facing Country Club Road. We were unsure they were required since the fireplace insert was not approved. In reading the HPC motion again, I do see the COA was approved with the requirement of the stone surround on the fake fireplace.

In addition, the original chimney stones were painted white (actually the entire house stucco as painted white). We can not find white stones and do not want to use painted stones on a newly renovated home.

The homeowner liked how the chimney looked without the stone surround as it is a clean look and consistent with the historic character of other Spanish Colonial chimneys in the neighborhood. The chimney is located on his outside terrace. The lower portion of chimney is obscured by his terrace furniture and will eventually be completely hidden once the arborvitae grow in.







Here are other similar chimneys on Spanish Colonial Homes in the neighborhood that show a similar chimney without a fake fireplace. These similar homes show that our chimney reflects the character of the neighborhood in architectural form and finish.



Thank you for considering this request.

Scott Busyn  
Great Neighborhood Homes