

A M N ADDITION

R.T. DOC. NO.

KNOW ALL PERSONS BY THESE PRESENTS: That U.S. Bank National Association, a national banking association, fee owner of the following described property situated in the County of Hennepin, State of Minnesota, to wit:

Lot 1, Block 1, except that part thereof which lies Northwesterly of a line drawn from a point on the North line of Section 32, Township 28, Range 24 distant 110 feet Easterly of the Northwest corner of said section to a point on the West line thereof distant 110 feet Southerly of said Northwest corner; Lot 2, Block 1, except the Easterly 70 feet thereof; Yorktown, Hennepin County, Minnesota.

Has caused the same to be surveyed and platted as A M N ADDITION and does hereby dedicate to the public for public use the drainage and utility easements as created by this plat.

In witness whereof said U.S. Bank National Association, a national banking association, has caused these presents to be signed by its proper officer this day of , 20 .

Signed: U.S. BANK NATIONAL ASSOCIATION

By (Signature), (Name Printed), its (Title)

STATE OF MINNESOTA
COUNTY OF
This instrument was acknowledged before me this day of , 20 , by , its
of U.S. Bank National Association, a national banking association, on behalf of the association.

(Signature) (Name Printed)
Notary Public, County, Minnesota
My Commission Expires

I Nathan H. Carlson do hereby certify that this plat was prepared by me or under my direct supervision; that I am a duly Licensed Land Surveyor in the State of Minnesota; that this plat is a correct representation of the boundary survey; that all mathematical data and labels are correctly designated on this plat; that all monuments depicted on this plat have been, or will be correctly set within one year; that all water boundaries and wet lands, as defined in Minnesota Statutes, Section 505.01, Subd. 3, as of the date of this certificate are shown and labeled on this plat; and all public ways are shown and labeled on this plat.

Dated this day of , 20 .

Nathan H. Carlson, Land Surveyor
Minnesota License No. 45873

STATE OF MINNESOTA
COUNTY OF
This instrument was acknowledged before me on this day of , 20 , by Nathan H. Carlson.

(Signature) (Name Printed)
Notary Public, County, Minnesota
My Commission Expires

CITY COUNCIL, CITY OF EDINA, MINNESOTA
This plat of A M N ADDITION was approved and accepted by the City Council of the City of Edina, Minnesota at a regular meeting thereof held this day of , 20 and said plat is in compliance with the provisions of Minnesota Statutes, Section 505.03, Subdivision 2.

CITY COUNCIL, CITY OF EDINA, MINNESOTA

By Mayor By Clerk

RESIDENT AND REAL ESTATE SERVICES, Hennepin County, Minnesota
I hereby certify that taxes payable in 20 and prior years have been paid for land described on this plat, dated this day of , 20 .

Mark V. Chapin, County Auditor By Deputy

SURVEY DIVISION, Hennepin County, Minnesota
Pursuant to Minnesota STAT. Sec. 383B.565 (1969), this plat has been approved this day of , 20 .

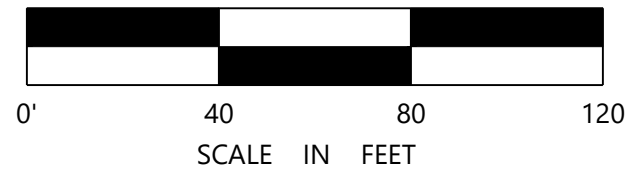
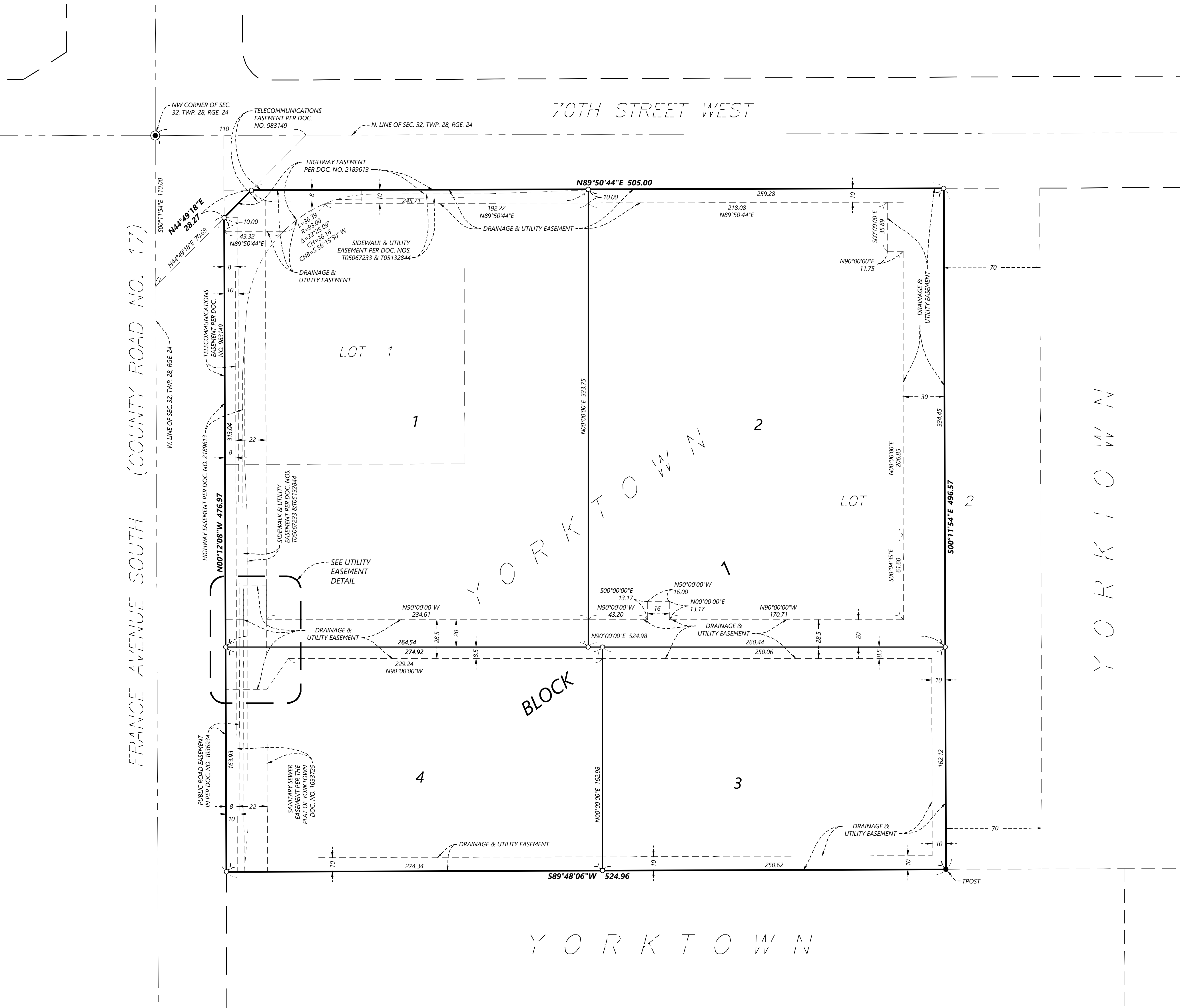
Chris F. Mavis, County Surveyor By

REGISTRAR OF TITLES, Hennepin County, Minnesota
I hereby certify that the within plat of A M N ADDITION was filed in this office this day of , 20 , at o'clock m.

Martin McCormick, Registrar of Titles By Deputy

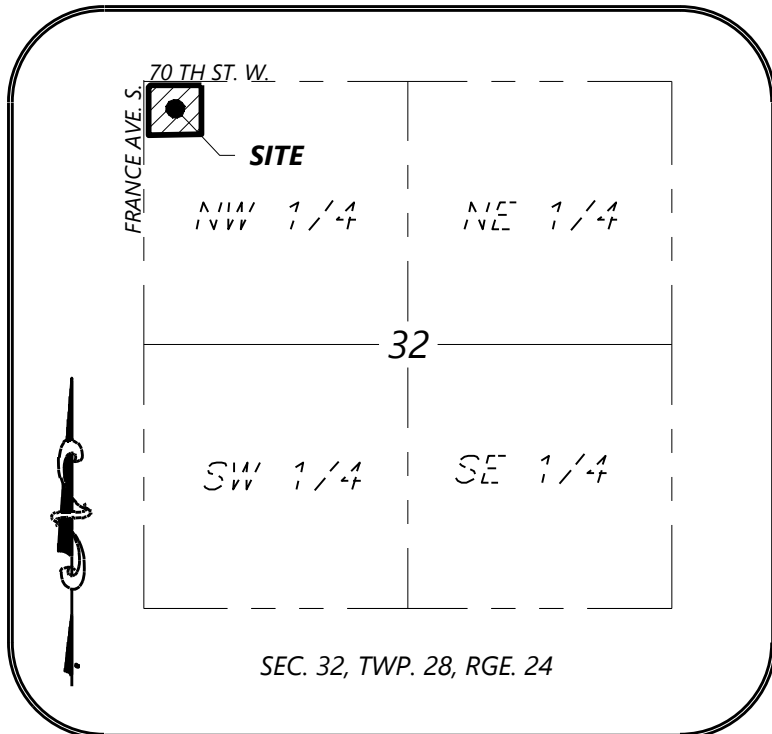
A M N ADDITION

R.T. DOC. NO. _____



- CAST IRON MONUMENT (SEE LABEL)
- FOUND MONUMENT (SEE LABEL)
- SET MONUMENT - LS 45873

VCNTY MAP
NOT TO SCALE



UTILITY EASEMENT DETAIL
NOT TO SCALE

